



## **Collaborative shaping of Research Agendas in WoodWisdom-net**

### **RESEARCH AREA 3 Sustainable, renewable raw material production**

#### **Results from Task 2**

Sub-area 3.1 .....	3
Sub-area 3.2 .....	6
Sub-area 3.3 .....	9
Sub-area 3.4 .....	12
Sub-area 3.5 .....	15
Sub-area 3.N .....	18

## Sub-area 3.1

Table 1 Sub-area 3.1 Statistics from Task 2

Issue	Novelty					Tentative interest					
	Mean	Std	min	max	Respondents	0	1	2	3	Respondents	Weighted sum*
3.1.1	3.23	1.23	1	7	22	45	7	6	2	60	25
3.1.2	3.78	1.90	1	7	18	46	2	7	3	58	25
3.1.3	3.83	1.47	2	7	18	46	3	9	1	59	24
3.1.4	3.13	1.51	1	7	15	44	4	4	3	55	21
3.1.5	3.00	1.36	1	5	14	45	6	2	2	55	16
3.1.6	3.00	1.18	1	5	11	48	5	0	1	54	8
3.1.7	3.13	1.13	2	5	8	52	2	0	1	55	5
3.1.8	3.76	1.56	1	7	17	40	7	3	4	54	25
3.1.9	3.58	1.16	2	5	12	45	5	2	2	54	15
3.1.10	4.31	1.38	2	6	13	46	2	6	2	56	20
3.1.11	3.67	1.23	2	6	12	45	3	3	2	53	15
3.1.12	4.29	1.53	2	7	17	39	3	8	3	53	28
3.1.13	4.29	1.53	2	7	17	39	3	8	3	53	28
3.1.14	3.36	1.45	1	6	14	43	5	4	3	55	22
3.1.15	2.00	1.18	1	4	11	47	3	2	0	52	7
3.1.16	3.87	1.30	2	6	15	43	5	3	1	52	14
3.1.17	1.88	1.36	1	4	8	48	1	3	0	52	7
3.1.18	3.38	1.71	1	7	13	41	5	3	2	51	17
3.1.19	3.58	1.16	2	5	12	41	5	3	2	51	17
3.1.20	3.64	1.78	1	6	14	39	6	4	2	51	20
3.1.21	2.40	1.51	1	5	10	49	2	1	1	53	7
3.1.22	3.62	1.39	2	6	13	43	5	2	1	51	12
3.1.23	3.50	1.20	2	5	8	47	2	0	2	51	8
3.1.24	4.38	2.00	2	7	8	45	3	1	2	51	11
3.1.25	3.67	1.23	2	6	12	40	0	7	1	48	17
3.1.26	4.53	1.93	1	7	19	34	2	6	7	49	35
3.1.27	3.00	1.29	1	5	7	45	3	0	0	48	3
3.1.28	4.24	1.52	2	7	17	35	2	7	5	49	31
3.1.29	3.62	1.98	2	7	13	39	4	1	4	48	18
3.1.30	3.23	1.24	1	5	13	43	4	1	0	48	6
3.1.31	2.80	1.14	1	5	10	42	3	1	2	48	11
3.1.32	4.81	1.60	2	7	16	36	1	4	7	48	30
3.1.33	3.50	1.65	2	6	10	43	2	2	2	49	12
3.1.34	3.73	1.22	2	6	15	39	3	5	1	48	16

\* Weighted sum: Sum of the respondents weighted with the specific criteria (0,1,2,3)

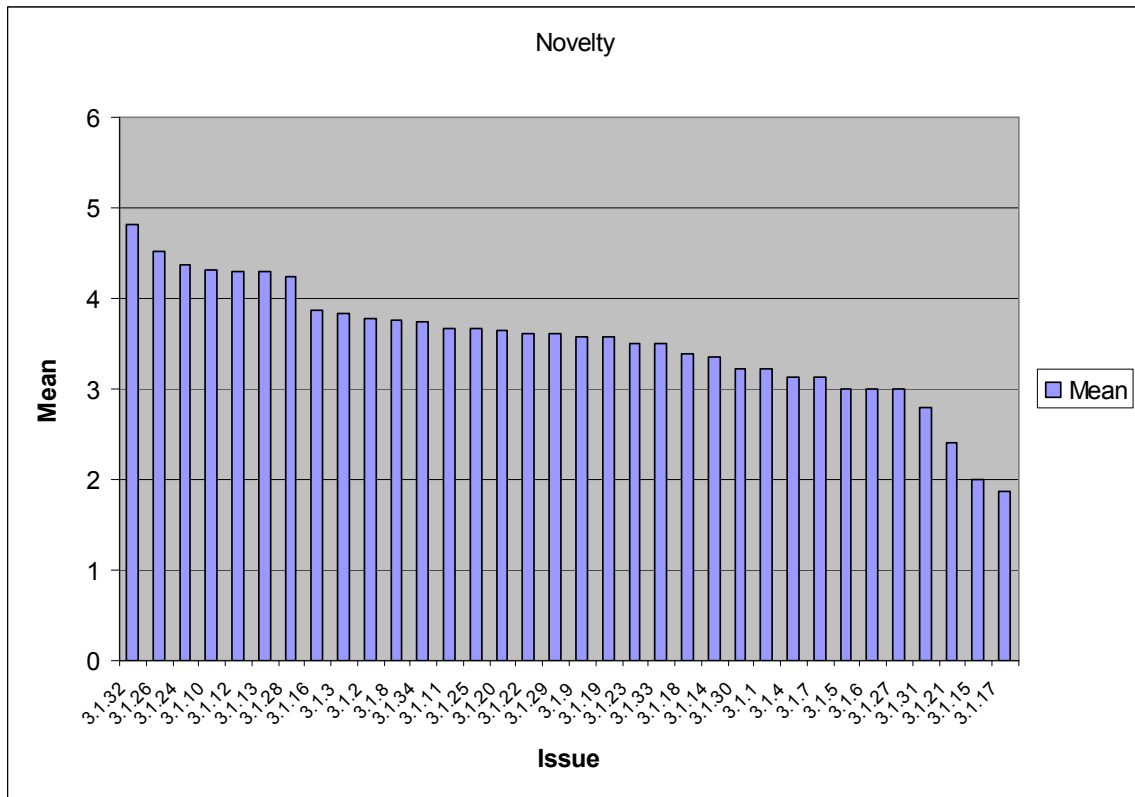


Figure 1 Sub-area 3.1 Novelty

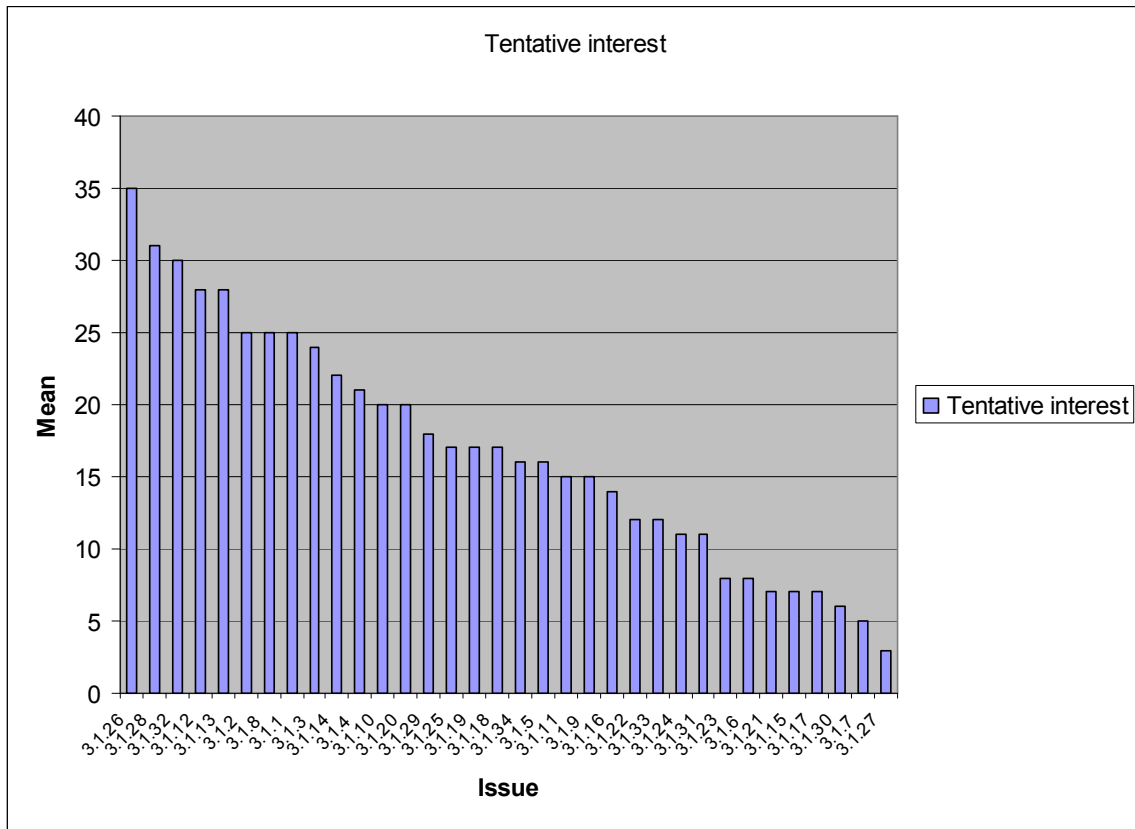


Figure 2 Sub-area 3.1 Tentative interest

## Sub-area 3.2

Table 2 Sub-area 3.2 Statistics from Task 2

Issue	Novelty					Tentative interest					
	Mean	Std	min	max	Respondents	0	1	2	3	Respondents	Weighted sum*
3.2.1	3.00	1.73	1	6	11	27	1	2	2	32	11
3.2.2	3.82	1.25	2	5	11	25	2	1	2	30	10
3.2.3	3.20	1.62	1	6	10	27	1	0	1	29	4
3.2.4	3.10	0.99	1	4	10	24	4	1	1	30	9
3.2.5	3.11	1.05	1	5	9	25	0	2	2	29	10
3.2.6	3.20	1.55	1	5	10	26	0	1	2	29	8
3.2.7	3.17	1.34	1	5	12	23	2	1	3	29	13
3.2.8	3.10	1.73	1	7	10	27	2	0	0	29	2
3.2.9	4.08	1.26	2	6	13	23	3	1	2	29	11
3.2.10	3.38	1.66	1	6	13	21	3	5	1	30	16
3.2.11	2.56	1.01	1	4	9	27	2	0	0	29	2
3.2.12	4.15	1.63	1	7	13	23	3	1	2	29	11
3.2.13	2.44	1.24	1	4	9	27	0	1	1	29	5
3.2.14	3.92	1.44	2	7	12	23	2	1	2	28	10
3.2.15	3.30	1.34	1	5	10	25	1	1	1	28	6
3.2.16	2.67	0.87	1	4	9	25	1	0	2	28	7
3.2.17	3.10	1.37	1	6	10	23	2	1	2	28	10
3.2.18	2.78	1.09	1	5	9	26	1	0	1	28	4
3.2.19	5.08	1.44	3	7	12	19	3	4	2	28	17
3.2.20	4.42	1.83	2	7	12	21	2	3	2	28	14
3.2.21	4.18	0.87	3	5	11	22	3	2	1	28	10
3.2.22	4.44	1.33	3	7	9	22	1	3	2	28	13
3.2.23	3.82	2.36	1	7	11	23	2	0	3	28	11

\* Weighted sum: Sum of the respondents weighted with the specific criteria (0,1,2,3)

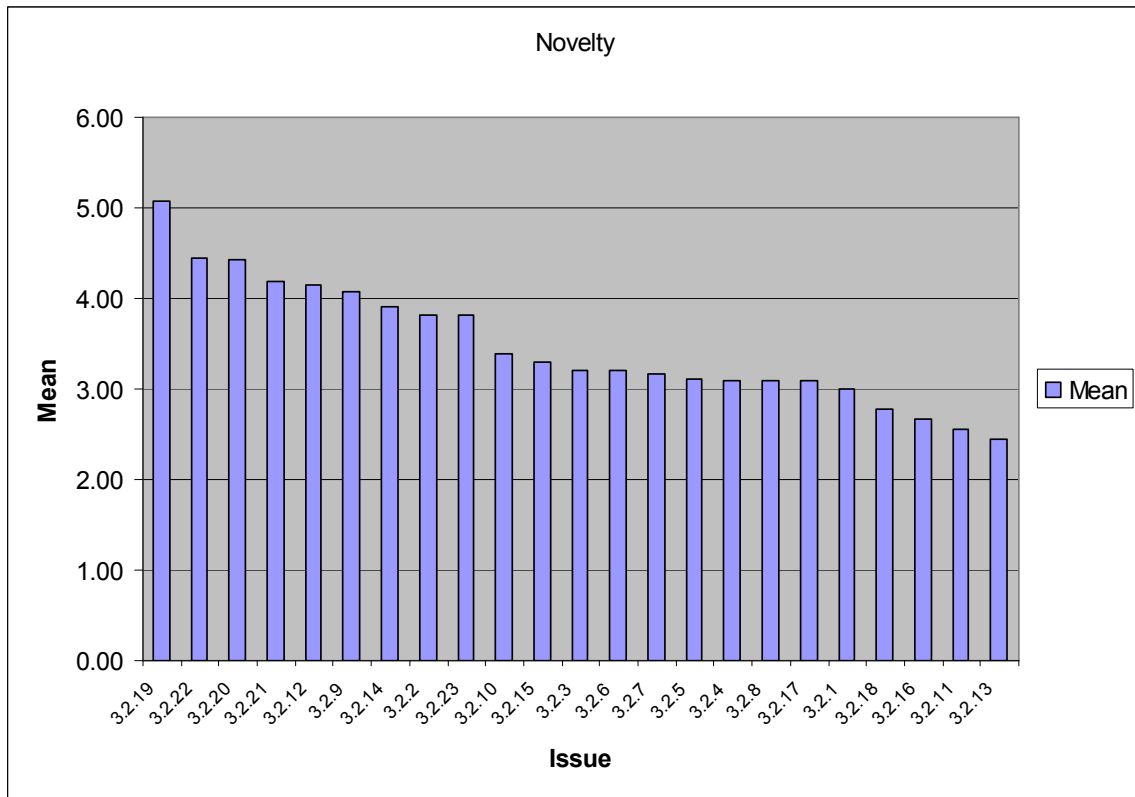


Figure 3 Sub-area 3.2 Novelty

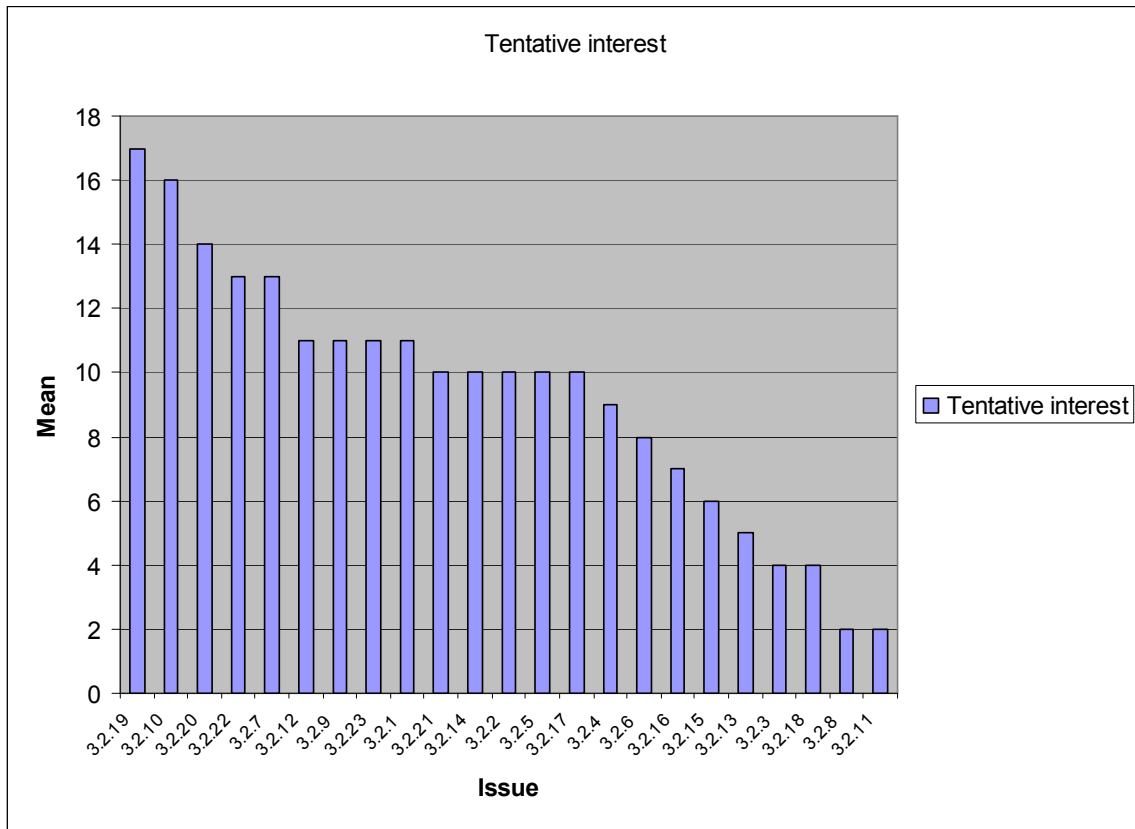


Figure 4 Sub-area 3.2 Tentative interest



### Sub-area 3.3

Table 3 Sub-area 3.3 Statistics from Task 2

Issue	Novelty					Tentative interest					
	Mean	Std	min	max	Respondents	0	1	2	3	Respondents	Weighted sum*
3.3.1	3.36	2.06	1	7	14	34	4	3	1	42	13
3.3.2	4.71	2.14	1	7	17	29	3	5	5	42	28
3.3.3	3.45	1.13	1	5	11	37	2	2	0	41	6
3.3.4	4.11	1.17	3	6	9	35	1	4	1	41	12
3.3.5	3.00	1.61	1	6	11	36	3	2	0	41	7
3.3.6	3.53	1.73	1	7	15	30	5	2	4	41	21
3.3.7	4.50	2.26	1	7	18	30	3	3	7	43	30
3.3.8	4.11	2.23	1	7	19	27	5	4	6	42	31
3.3.9	3.22	1.30	1	5	9	38	2	1	0	41	4
3.3.10	3.88	2.32	1	7	17	31	4	1	4	40	18
3.3.11	3.47	1.23	2	5	17	32	4	3	1	40	13
3.3.12	2.93	1.22	1	5	15	36	3	1	1	41	8
3.3.13	4.30	1.64	3	7	10	35	1	2	2	40	11
3.3.14	3.56	1.15	2	5	18	26	6	6	2	40	24
3.3.15	3.80	2.26	1	7	20	27	5	2	6	40	27
3.3.16	3.20	1.55	1	5	10	37	1	2	0	40	5
3.3.17	3.40	1.40	1	6	15	33	2	5	2	42	18
3.3.18	4.13	1.46	2	6	8	36	1	3	1	41	10
3.3.19	3.00	1.03	1	5	16	29	8	1	2	40	16
3.3.20	3.21	2.12	1	7	14	35	0	2	3	40	13
3.3.21	4.12	2.01	1	7	25	24	5	6	6	41	35
3.3.22	3.79	1.25	2	6	14	30	3	6	0	39	15

\* Weighted sum: Sum of the respondents weighted with the specific criteria (0,1,2,3)

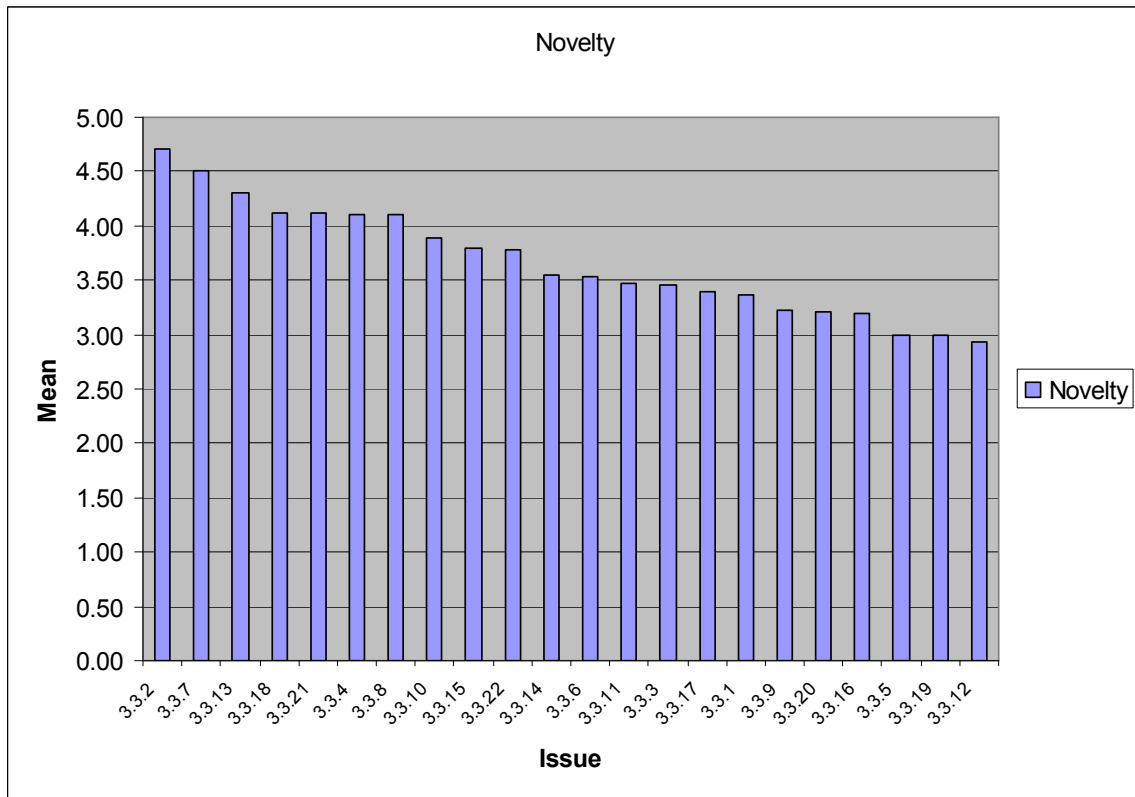


Figure 5 Sub-area 3.3 Novelty

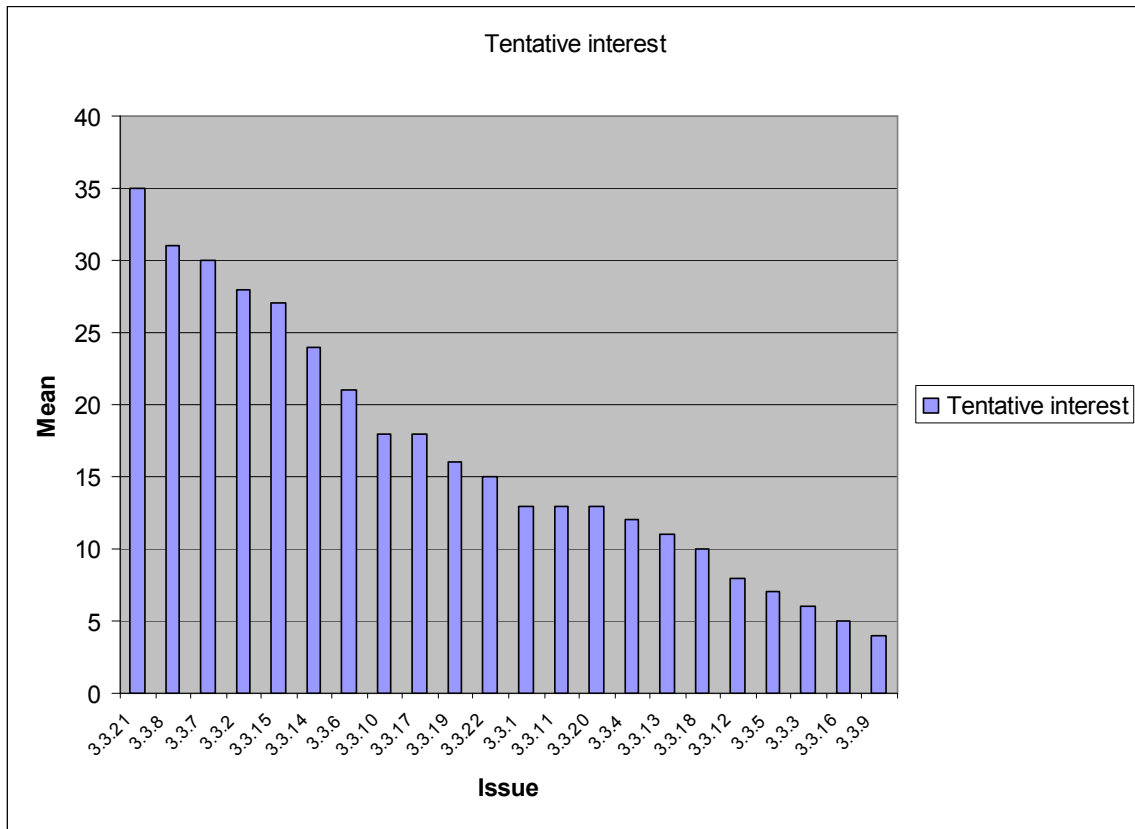


Figure 6 Sub-area 3.3 Tentative interest

## Sub-area 3.4

Table 4 Sub-area 3.4 Statistics from Task 2

Issue	Novelty					Tentative interest					
	Mean	Std	min	max	Respondents	0	1	2	3	Respondents	Weighted sum
3.4.1	3.62	1.12	2	5	13	23	5	3	3	34	20
3.4.2	4.13	2.09	1	7	16	20	2	4	6	32	28
3.4.3	4.91	2.17	2	7	11	24	1	0	6	31	19
3.4.4	4.40	1.51	2	7	10	25	2	3	1	31	11
3.4.5	3.67	1.97	2	7	6	29	1	0	1	31	4
3.4.6	3.00	1.22	2	5	5	31	0	0	0	31	0
3.4.7	3.89	1.45	2	6	9	27	2	2	0	31	6
3.4.8	2.67	0.52	2	3	6	30	0	0	0	30	0
3.4.9	4.40	2.29	1	7	15	21	3	1	5	30	20
3.4.10	3.43	1.27	2	5	7	28	2	0	0	30	2
3.4.11	2.71	1.38	1	5	7	27	0	2	0	29	4
3.4.12	3.86	1.07	3	5	7	26	3	1	0	30	5
3.4.13	3.17	1.17	2	5	6	27	2	0	0	29	2
3.4.14	3.10	1.29	1	5	10	25	1	4	0	30	9
3.4.15	3.33	1.87	2	7	9	26	0	2	1	29	7
3.4.16	4.85	2.44	2	7	13	21	1	1	6	29	21
3.4.17	4.50	2.14	1	7	14	17	4	2	4	27	20
3.4.18	1.80	0.84	1	3	5	23	2	1	1	27	7
3.4.19	3.40	1.84	1	7	10	22	0	4	2	28	14
3.4.20	4.81	2.14	2	7	16	16	1	4	7	28	30
3.4.21	3.30	0.82	2	4	10	21	2	3	2	28	14
3.4.22	3.00	0.71	2	4	9	20	2	4	1	27	13
3.4.23	3.17	1.83	1	6	6	24	1	0	2	27	7

\* Weighted sum: Sum of the respondents weighted with the specific criteria (0,1,2,3)

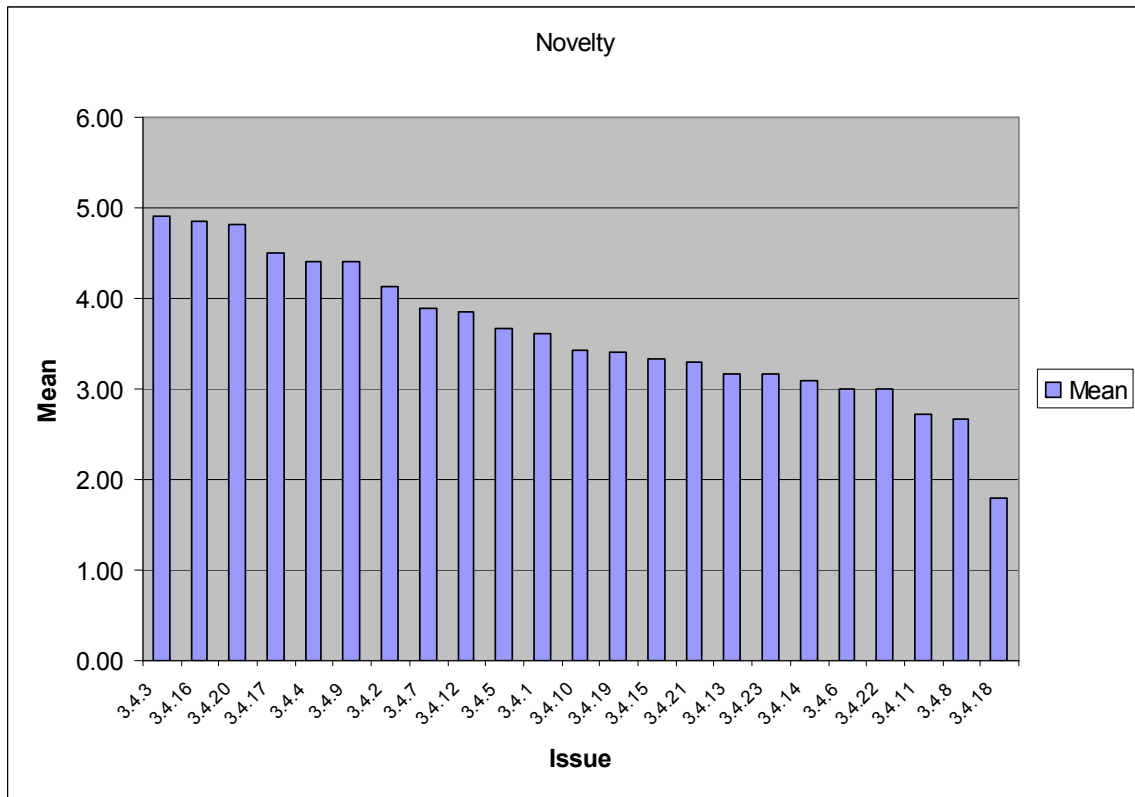


Figure 7 Sub-area 3.4 Novelty

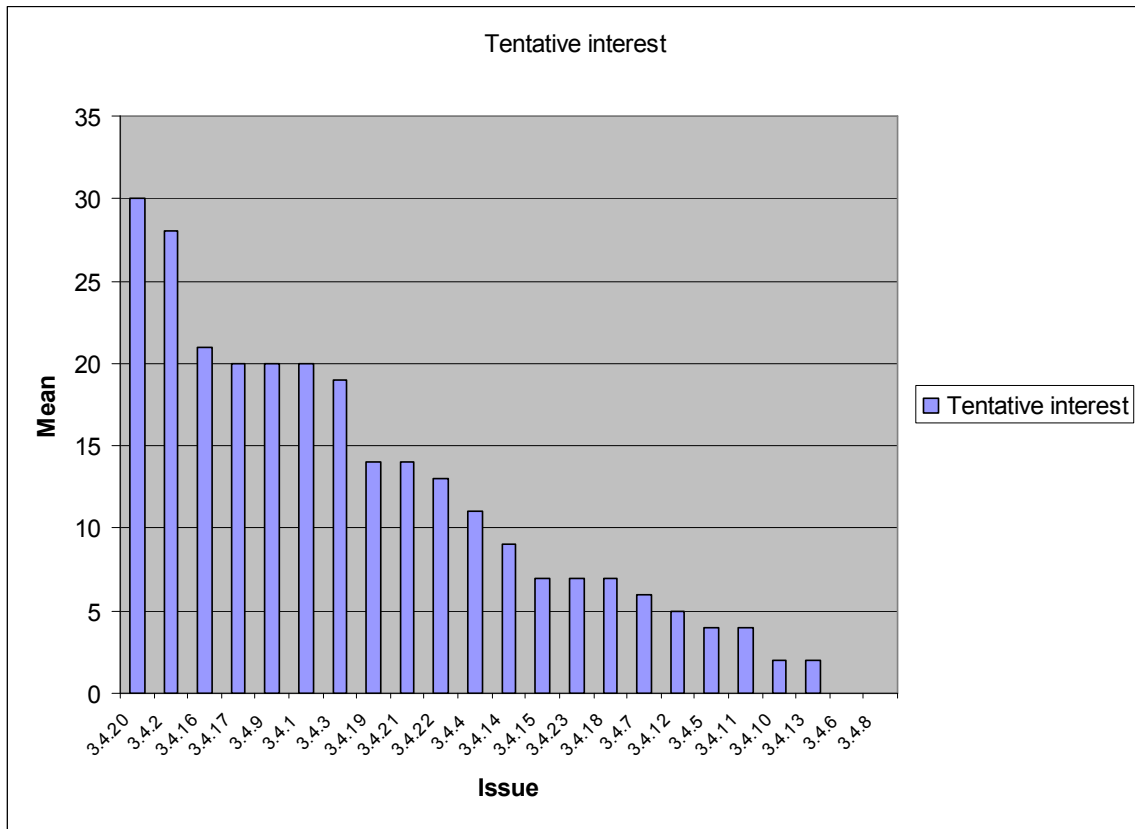


Figure 8 Sub-area 3.4 Tentative interest

## Sub-area 3.5

Table 5 Sub-area 3.5 Statistics from Task 2

Issue	Novelty					Tentative interest					
	Mean	Std	min	max	Respondents	0	1	2	3	Respondents	Weighted sum
3.5.1	3.25	1.26	2	5	4	43	0	0	0	43	0
3.5.2	3.67	0.58	3	4	3	42	0	0	0	42	0
3.5.3	4.14	2.04	2	7	7	34	5	1	1	41	10
3.5.4	3.25	0.71	2	4	8	37	5	1	0	43	7
3.5.5	4.18	1.40	2	7	11	31	3	4	3	41	20
3.5.6	4.10	0.74	3	5	10	28	8	2	2	40	18
3.5.7	3.63	1.19	2	6	8	32	2	3	1	38	11
3.5.8	5.00	1.87	2	7	17	25	2	2	9	38	33
3.5.9	1.33	0.58	1	2	3	36	0	0	0	36	0
3.5.10	3.43	0.98	2	5	7	32	2	1	1	36	7
3.5.11	4.33	0.87	3	6	9	29	2	2	3	36	15
3.5.12	4.08	1.31	2	7	12	26	3	4	3	36	20
3.5.13	2.50	1.05	1	4	6	32	3	1	0	36	5
3.5.14	3.00	1.69	1	5	8	30	1	3	2	36	13
3.5.15	4.50	1.62	1	7	12	28	3	1	4	36	17
3.5.16	4.13	1.46	2	7	8	30	0	4	2	36	14
3.5.17	4.33	2.08	2	6	3	34	0	1	0	35	2
3.5.18	3.78	1.09	2	5	9	26	2	5	2	35	18
3.5.19	3.77	1.01	2	5	13	24	5	4	3	36	22
3.5.20	3.40	1.07	2	5	10	25	4	3	3	35	19
3.5.21	2.89	1.27	1	4	9	29	5	0	1	35	8
3.5.22	4.17	1.47	2	7	12	23	3	6	2	34	21
3.5.23	4.14	1.07	2	5	7	28	5	0	1	34	8
3.5.24	4.50	1.78	1	7	10	25	3	3	3	34	18
3.5.25	4.63	1.30	2	6	8	28	3	1	2	34	11
3.5.26	4.92	1.51	1	7	12	26	2	4	4	36	22
3.5.27	3.57	1.13	2	5	7	29	1	3	1	34	10
3.5.28	1.67	0.58	1	2	3	34	0	0	0	34	0
3.5.29	1.70	1.49	1	5	10	32	1	1	1	35	6
3.5.30	3.71	2.06	1	6	7	31	0	3	0	34	6

\* Weighted sum: Sum of the respondents weighted with the specific criteria (0,1,2,3)

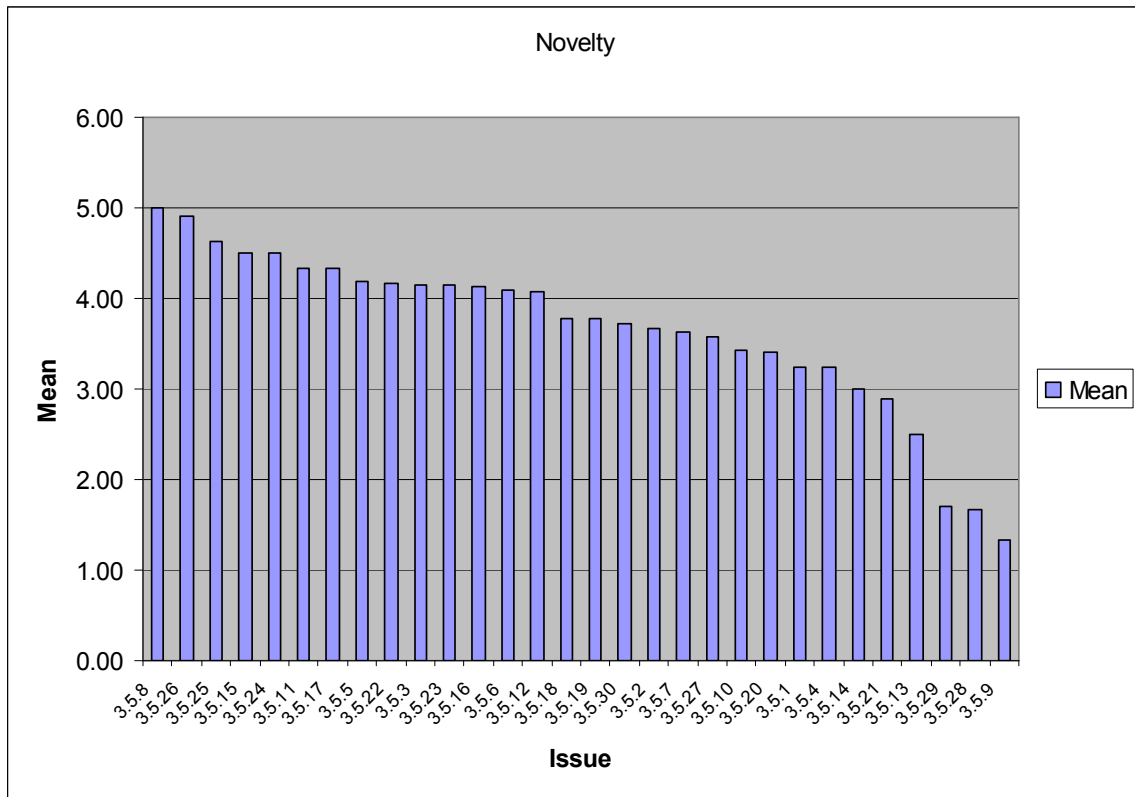


Figure 9 Sub-area 3.5 Novelty



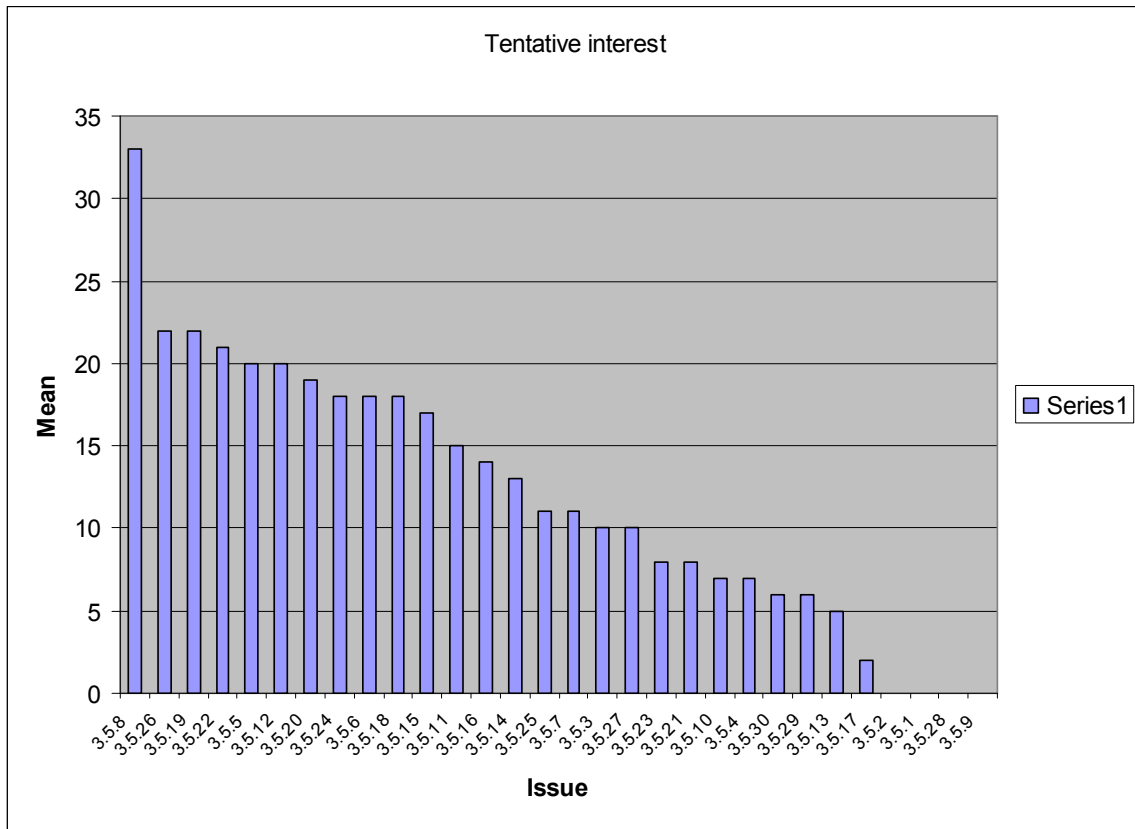


Figure 10 Sub-area 3.5 Tentative interest

### Sub-area 3.N

**Table 6 Sub-area 3.N Statistics from Task 2**

Issue	Novelty					Tentative interest					
	Mean	Std	min	max	Respondents	0	1	2	3	Respondents	Weighted sum
3.N.1	3.80	2.28	1	7	5	19	0	1	1	21	5
3.N.2	2.83	1.17	1	4	6	20	0	0	0	20	0
3.N.3	3.67	1.53	2	5	3	18	0	0	1	19	3
3.N.4	3.50	2.12	2	5	2	19	0	0	0	19	0
3.N.5	3.25	2.63	1	6	4	17	0	0	2	19	6

\* Weighted sum: Sum of the respondents weighted with the specific criteria (0,1,2,3)

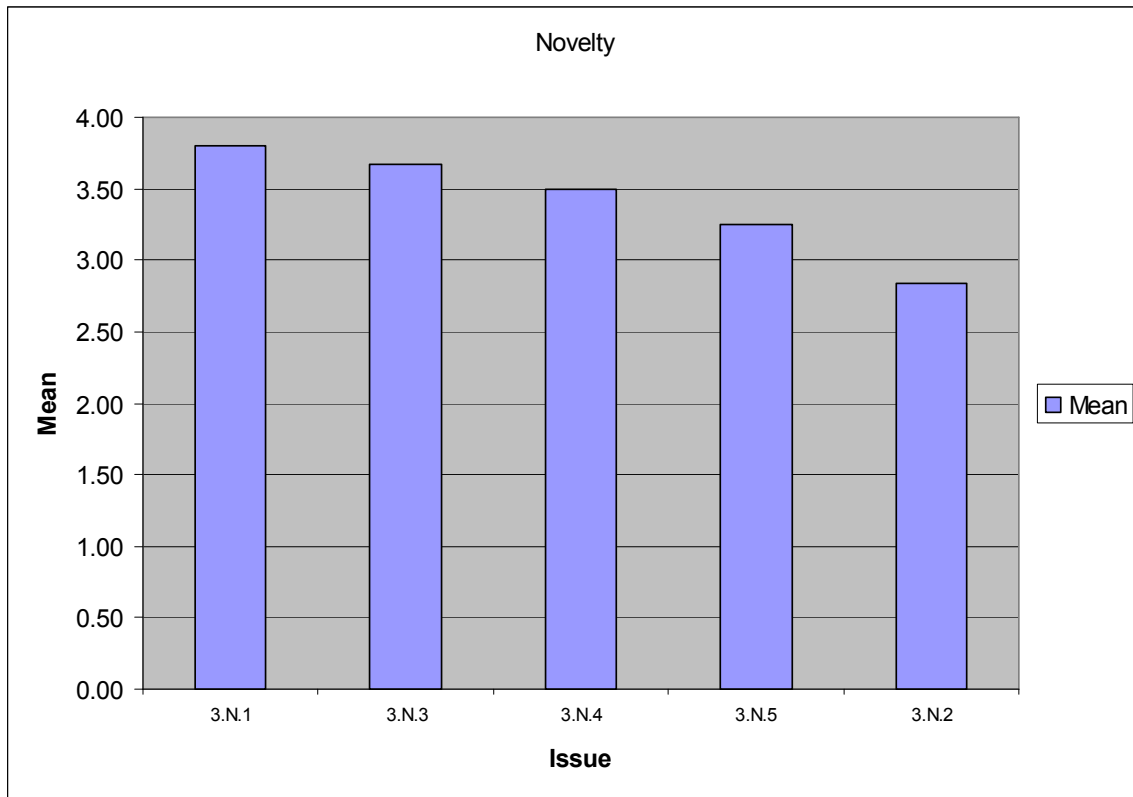
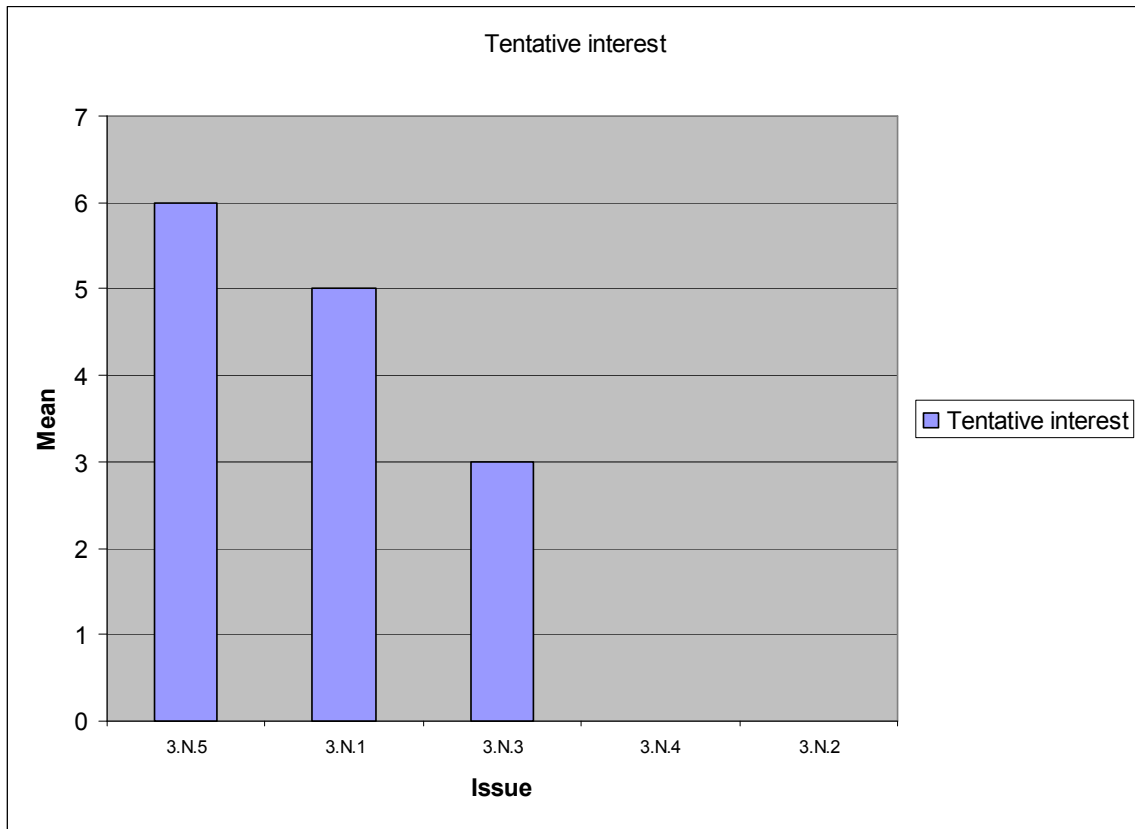


Figure 11 Sub-area 3.N Novelty



**Figure 12 Sub-area 3.N Tentative interest**