



## **Collaborative shaping of Research Agendas in WoodWisdom-net**

### **RESEARCH AREA 2 Biorefinery concept for efficient utilization of wood raw material**

#### **Results from Task 2**

Sub-area 2.1 .....	3
Sub-area 2.2 .....	6
Sub-area 2.3 .....	9
Sub-area 2.4 .....	12
Sub-area 2.5 .....	15
Sub-area 2.N .....	18

## Sub-area 2.1

Table 1 Sub-area 2.1 Statistics from Task 2

Issue	Novelty					Tentative interest					
	Mean	Std	min	max	Respondents	0	1	2	3	Respondents	Weighted sum
2.1.1	4.14	1.10	3	7	14	42	6	3	1	52	15
2.1.2	3.71	1.59	1	7	14	41	5	3	1	50	14
2.1.3	2.60	2.22	1	7	10	44	2	2	1	49	9
2.1.4	3.63	1.74	1	7	19	35	6	8	0	49	22
2.1.5	3.75	1.48	1	6	16	41	4	3	1	49	13
2.1.6	3.10	1.37	1	5	10	44	2	3	0	49	8
2.1.7	3.60	1.71	1	7	10	42	2	3	1	48	11
2.1.8	4.38	1.26	3	6	16	38	4	4	3	49	21
2.1.9	4.61	1.31	1	6	23	34	1	7	6	48	33
2.1.10	3.62	1.19	2	5	13	40	5	3	0	48	11
2.1.11	3.38	1.51	2	6	8	44	2	1	1	48	7
2.1.12	3.19	1.47	1	5	16	40	2	4	1	47	13
2.1.13	4.65	1.58	1	7	23	33	6	5	5	49	31
2.1.14	4.46	1.13	2	6	13	37	5	4	1	47	16
2.1.15	4.31	0.95	3	6	13	38	3	3	2	46	15
2.1.16	4.29	1.40	2	7	17	35	2	5	4	46	24
2.1.17	3.20	2.04	1	7	10	39	2	2	1	44	9
2.1.18	4.00	0.93	3	5	15	35	4	3	2	44	16
2.1.19	3.54	1.33	2	6	13	35	4	4	1	44	15
2.1.20	4.31	1.84	1	7	13	35	5	1	3	44	16
2.1.21	3.22	1.92	1	6	9	39	3	2	1	45	10
2.1.22	2.88	1.36	1	5	8	40	4	0	0	44	4
2.1.23	4.17	1.59	2	7	12	35	4	2	3	44	17
2.1.24	3.33	1.63	1	5	6	40	0	3	1	44	9
2.1.25	3.64	1.03	2	5	11	35	3	1	2	41	11
2.1.26	3.64	1.65	1	7	14	32	5	2	2	41	15
2.1.27	3.82	1.17	2	6	11	32	4	5	0	41	14
2.1.28	4.25	0.97	3	5	12	34	3	4	0	41	11
2.1.29	3.88	1.36	2	5	8	37	2	1	1	41	7

\* Weighted sum: Sum of the respondents weighted with the specific criteria (0,1,2,3)

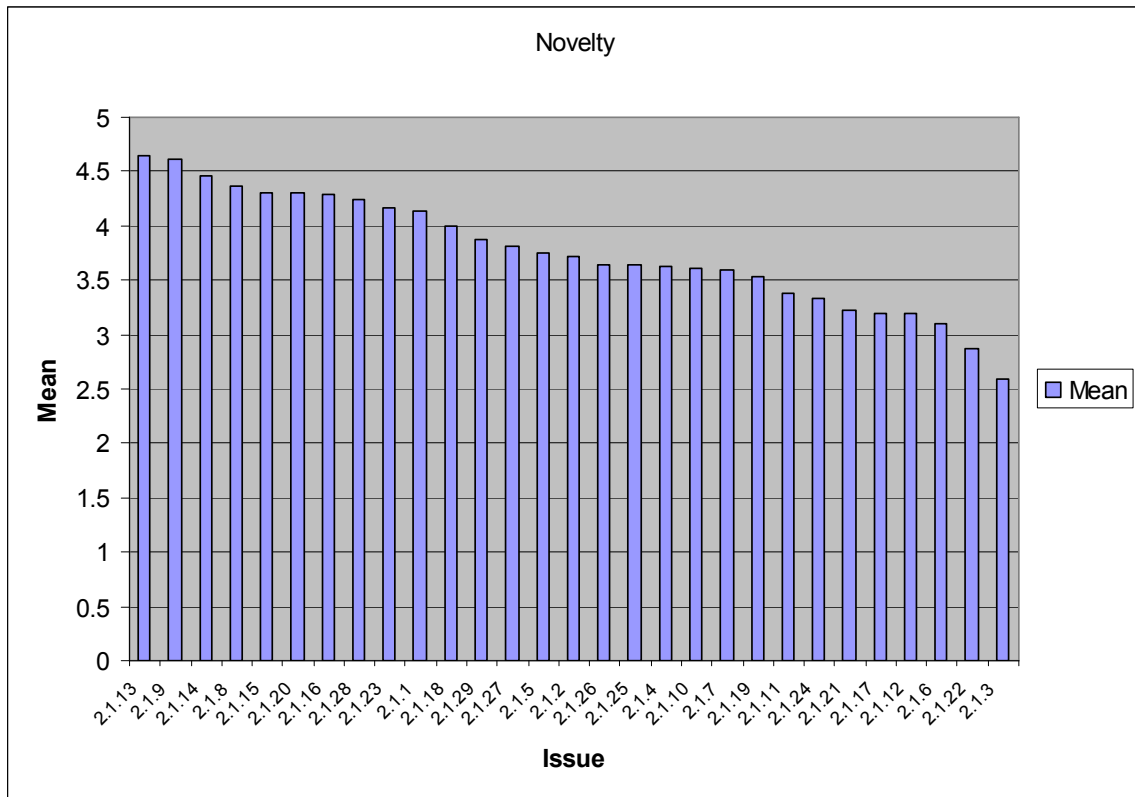


Figure 1 Sub-area 2.1 Novelty

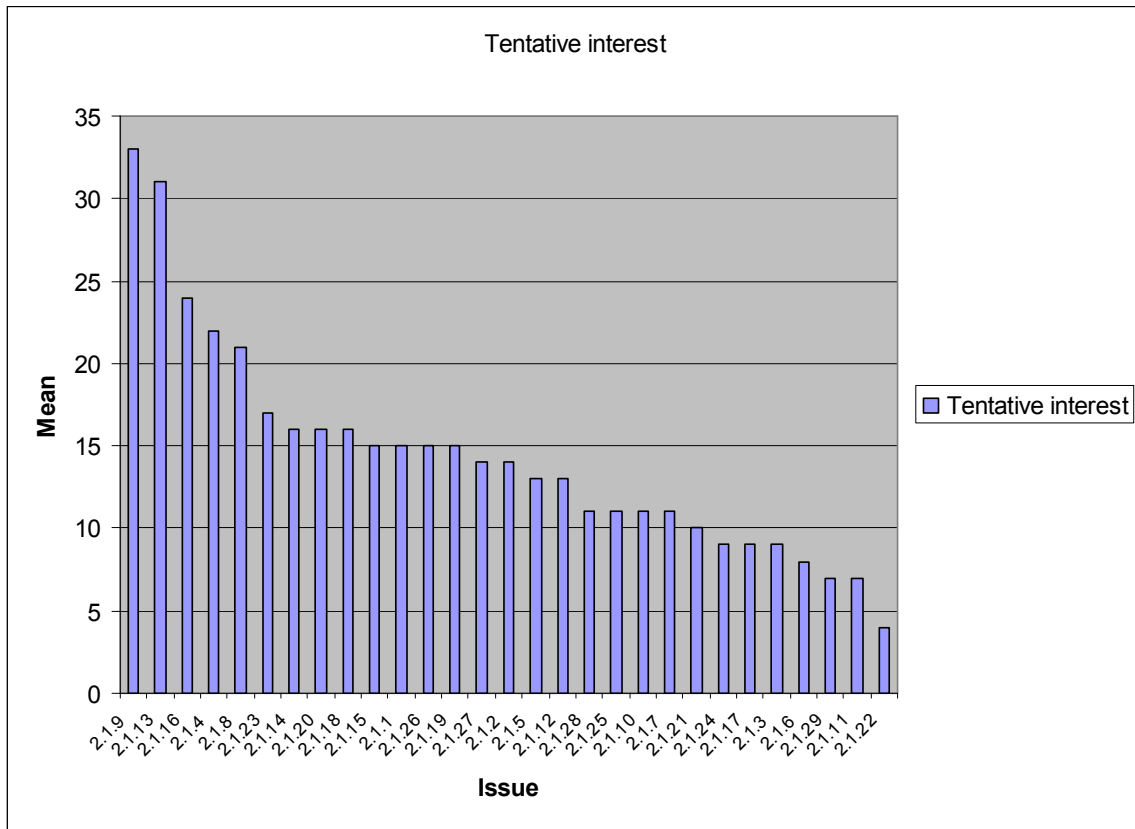


Figure 2 Sub-area 2.1 Tentative interest

## Sub-area 2.2

**Table 2 Sub-area 2.2 Statistics from Task 2**

Issue	Novelty					Tentative interest					
	Mean	Std	min	max	Respondents	0	1	2	3	Respondents	Weighted sum
2.2.1	3.90	1.79	1	6	10	28	1	3	1	33	10
2.2.2	3.70	1.49	1	6	10	26	1	3	1	31	10
2.2.3	3.00	1.73	1	5	11	25	1	4	0	30	9
2.2.4	4.90	1.52	3	7	10	25	3	1	1	30	8
2.2.5	4.00	2.31	1	7	7	26	1	3	0	30	7
2.2.6	3.89	1.05	2	5	9	24	2	3	1	30	11
2.2.7	3.25	1.48	1	5	12	23	2	3	2	30	14
2.2.8	4.14	2.19	1	7	7	27	0	2	2	31	10
2.2.9	3.14	2.48	1	7	7	28	0	2	1	31	7

\* Weighted sum: Sum of the respondents weighted with the specific criteria (0,1,2,3)

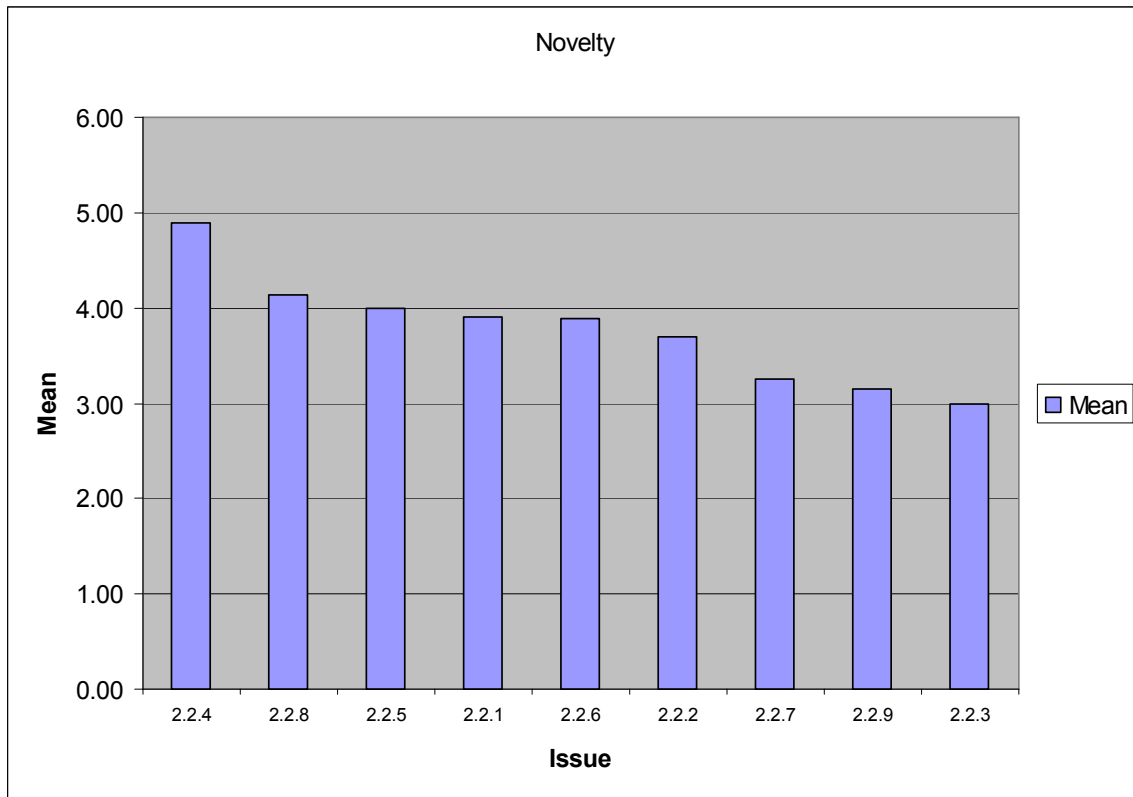


Figure 3 Sub-area 2.2 Novelty

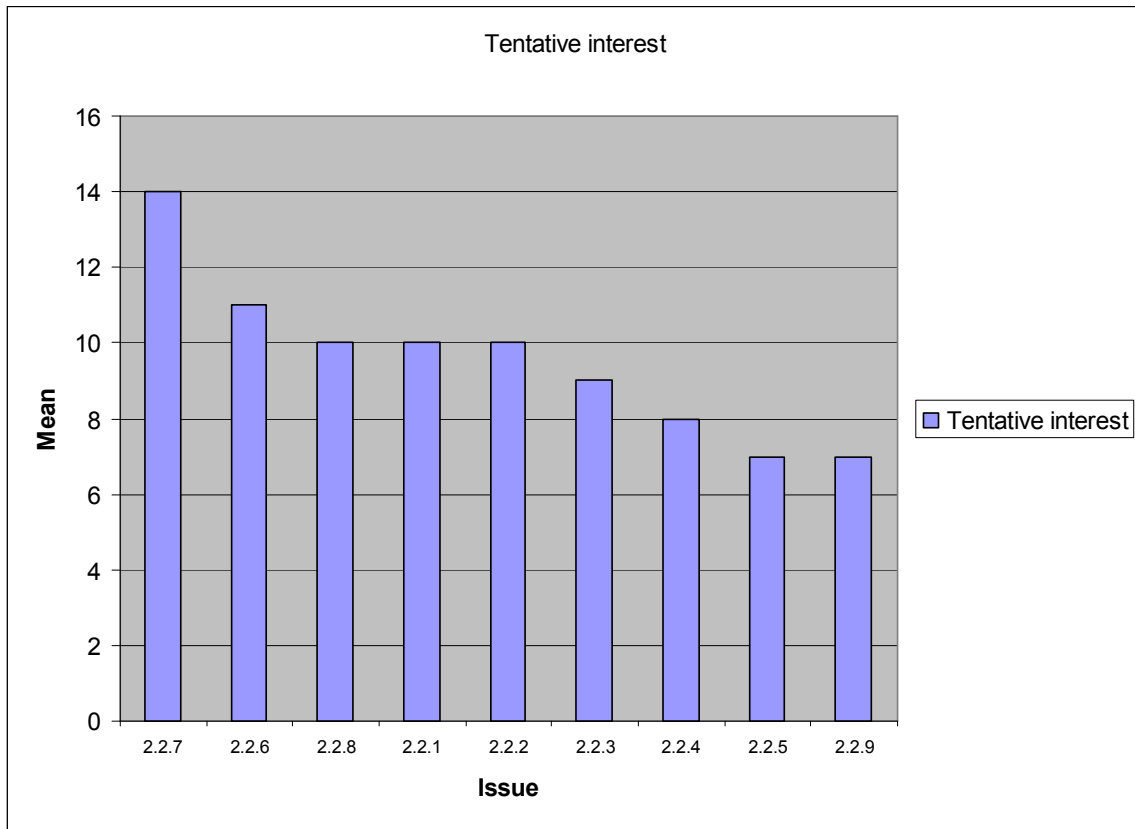


Figure 4 Sub-area 2.2 Tentative interest



### Sub-area 2.3

**Table 3 Sub-area 2.3 Statistics from Task 2**

Issue	Novelty					Tentative interest					
	Mean	Std	min	max	Respondents	0	1	2	3	Respondents	Weighted sum
2.3.1	3.50	2.00	1	7	8	18	0	3	0	21	6
2.3.2	2.50	1.73	1	5	4	18	0	0	1	19	3

\* Weighted sum: Sum of the respondents weighted with the specific criteria (0,1,2,3)

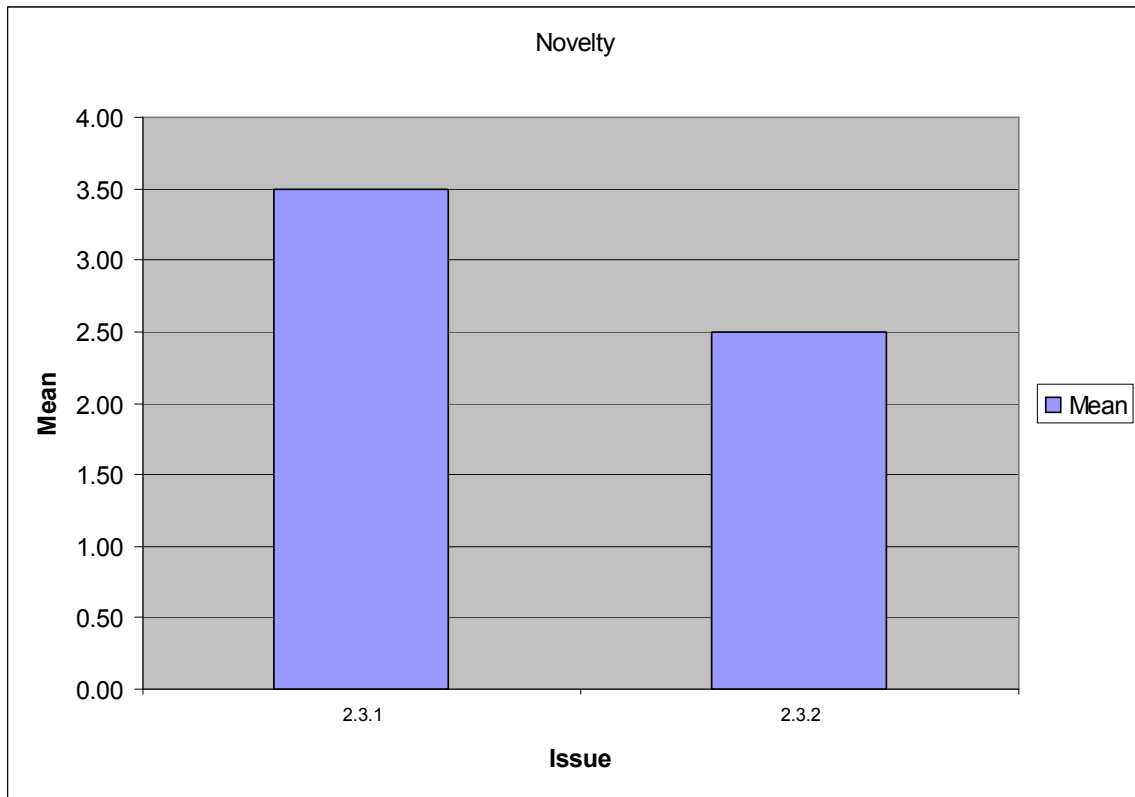


Figure 5 Sub-area 2.3 Novelty

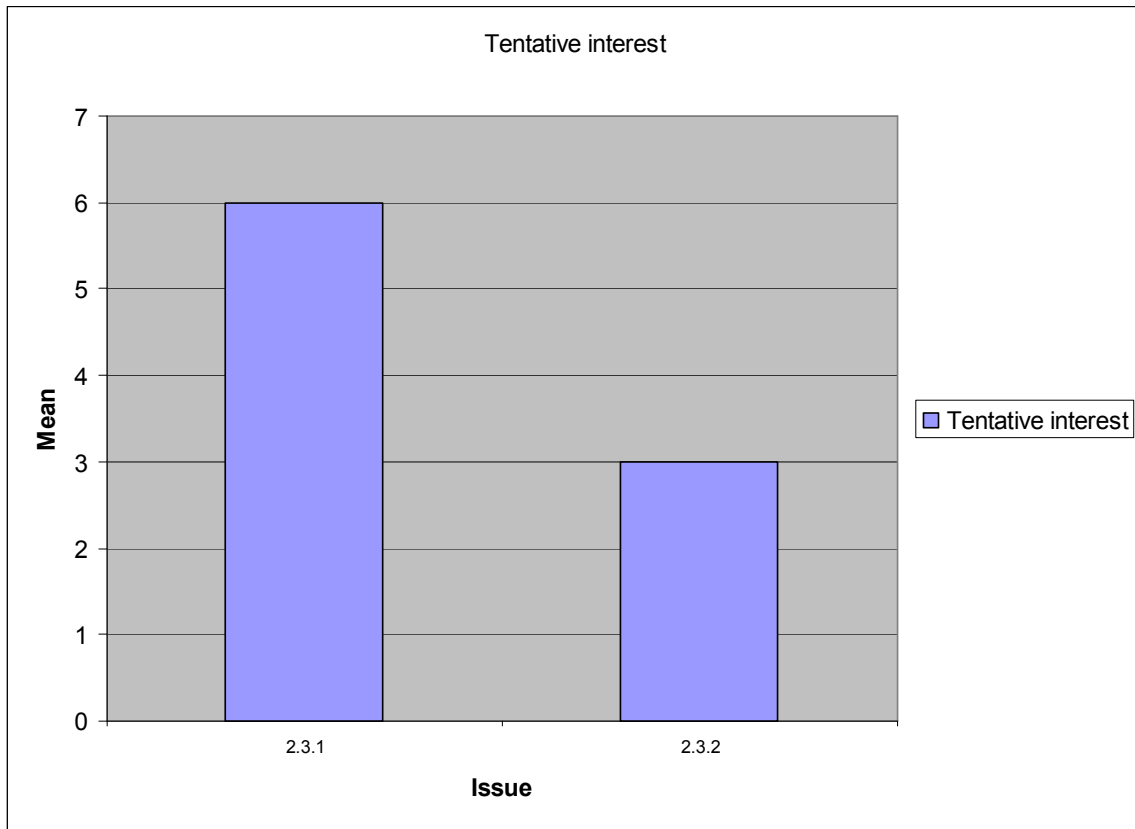


Figure 6 Sub-area 2.3 Tentative interest

## Sub-area 2.4

**Table 4 Sub-area 2.4 Statistics from Task 2**

Issue	Novelty					Tentative interest					
	Mean	Std	min	max	Respondents	0	1	2	3	Respondents	Weighted sum
2.4.1	3.85	1.34	1	7	13	12	3	6	1	22	18
2.4.2	2.00	1.00	1	3	5	18	1	0	0	19	1
2.4.3	3.00	1.10	2	4	6	18	2	0	0	20	2
2.4.4	3.57	1.81	2	7	7	15	2	1	1	19	7
2.4.5	4.13	1.96	2	7	8	12	4	0	2	18	10

\* Weighted sum: Sum of the respondents weighted with the specific criteria (0,1,2,3)

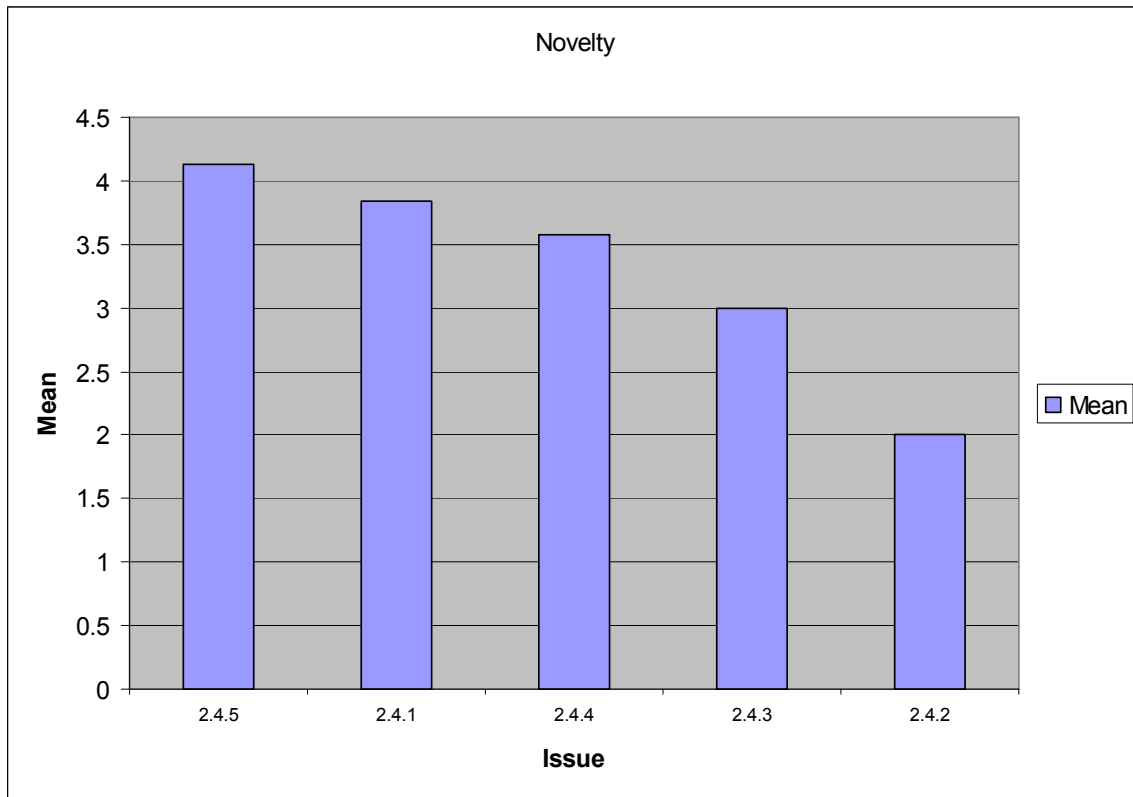


Figure 7 Sub-area 2.4 Novelty

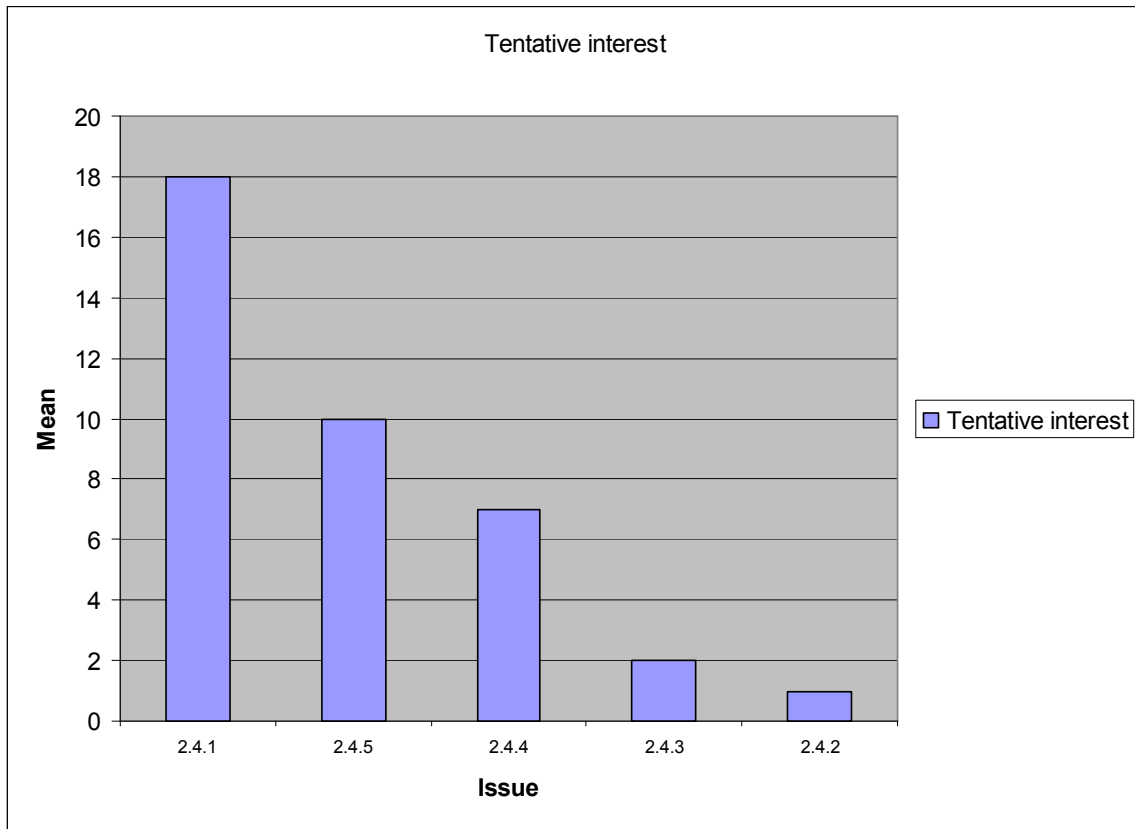


Figure 8 Sub-area 2.4 Tentative interest

## Sub-area 2.5

**Table 5 Sub-area 2.5 Statistics from Task 2**

Issue	Novelty					Tentative interest					
	Mean	Std	min	max	Respondents	0	1	2	3	Respondents	Weighted sum
2.5.1	1.86	1.46	1	5	7	25	0	1	1	27	5
2.5.2	3.89	2.03	1	7	9	19	2	2	3	26	15
2.5.3	4.00	1.58	2	6	5	25	1	0	0	26	1
2.5.4	4.00	2.26	1	7	12	18	3	3	3	27	18
2.5.5	3.71	1.80	2	7	7	23	2	0	1	26	5
2.5.6	4.17	1.72	2	7	6	22	2	0	1	25	5
2.5.7	4.29	1.70	3	7	7	24	0	1	1	26	5

\* Weighted sum: Sum of the respondents weighted with the specific criteria (0,1,2,3)

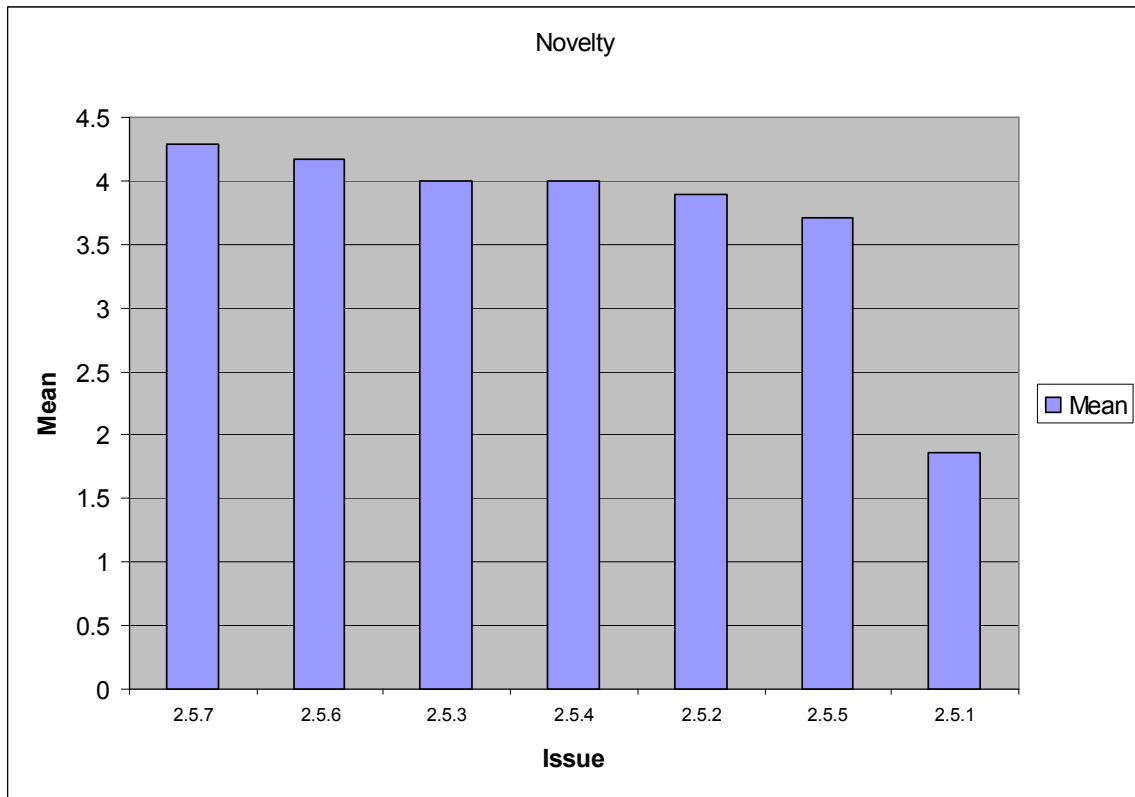


Figure 9 Sub-area 2.5 Novelty



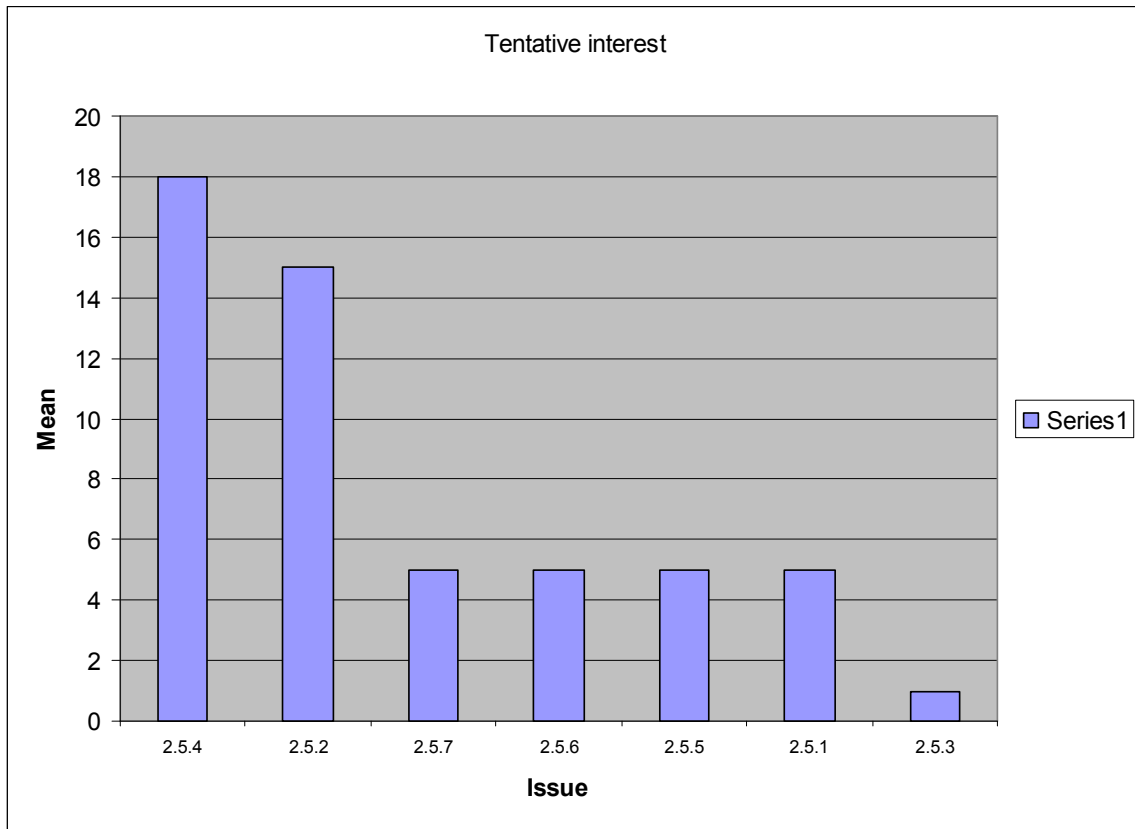


Figure 1 Sub-area 2.5 Tentative interest

## Sub-area 2.N

**Table 6 Sub-area 2.N Statistics from Task 2**

Issue	Novelty					Tentative interest					
	Mean	Std	min	max	Respondents	0	1	2	3	Respondents	Weighted sum
2.N.1	3.33	2.00	1	7	9	22	1	2	0	25	5
2.N.2	3.14	1.57	1	5	7	23	0	1	0	24	2
2.N.3	3.63	1.41	2	6	8	22	1	2	0	25	5
2.N.4	4.20	1.10	3	5	5	24	1	0	0	25	1
2.N.5	4.50	2.39	1	7	8	19	1	0	4	24	13

\* Weighted sum: Sum of the respondents weighted with the specific criteria (0,1,2,3)

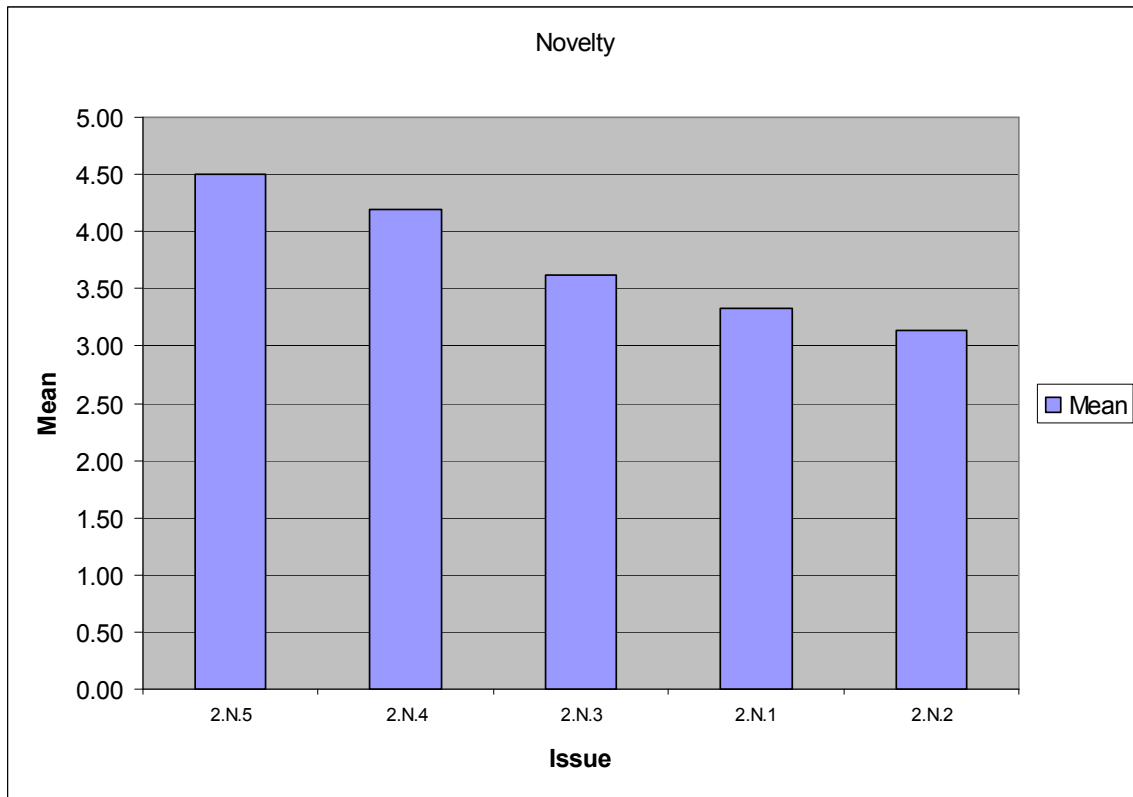


Figure 11 Sub-area 2.N Novelty

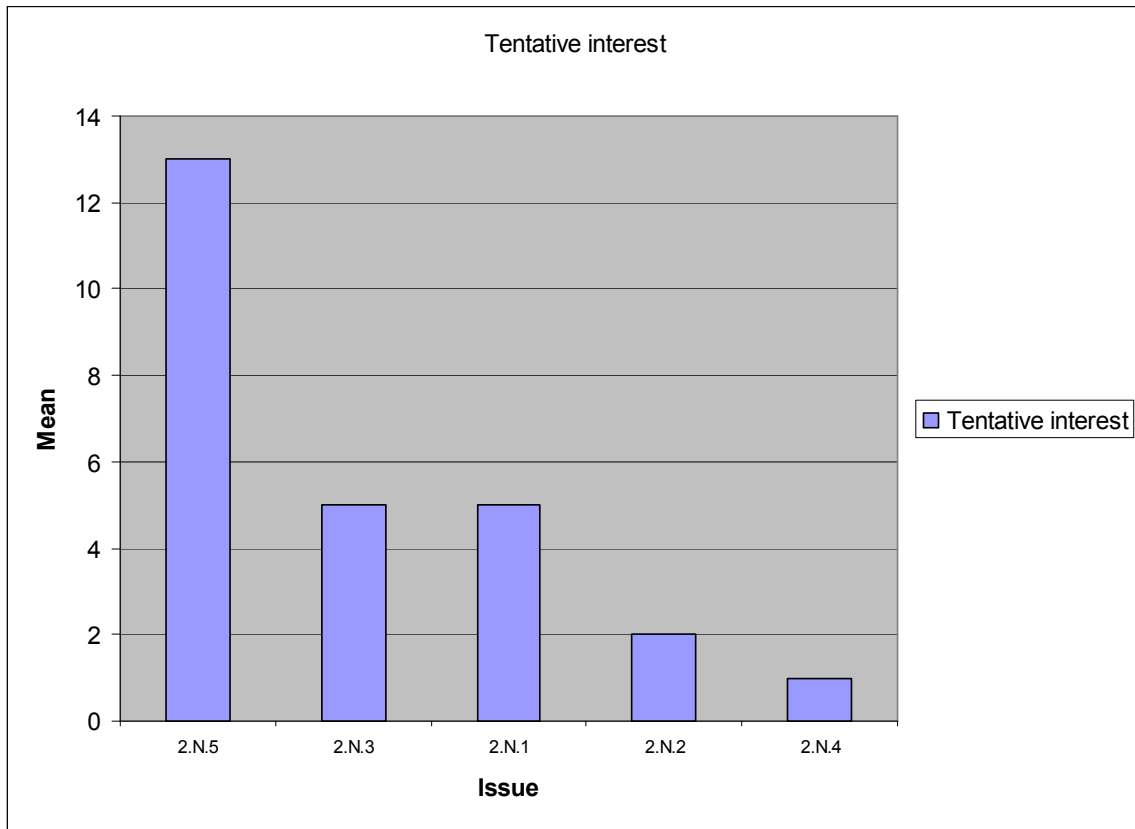


Figure 12 Sub-area 2.N Tentative interest