



Collaborative shaping of Research Agendas in WoodWisdom-net

**RESEARCH AREA 1 Knowledge-based products – new
value- added e.g. for construction, interior design,
information, packaging and health-care purposes**

Results from Task 2

Sub-area 1.1	3
Sub-area 1.2	6
Sub-area 1.3	9
Sub-area 1.4	12
Sub-area 1.5	15
Sub-area 1.N	18

Sub-area 1.1

Table 1 Sub-area 1.1 Statistics from Task 2

Issue	Novelty					Tentative interest					
	Mean	Std	min	max	respondents	0	1	2	3	Respondents	Weighted sum
1.1.1	4.26	1.27	2	7	35	32	7	16	3	58	48
1.1.2	3.81	1.33	1	6	26	32	3	9	3	47	30
1.1.3	3.57	1.50	1	6	21	32	9	4	2	47	23
1.1.4	3.75	1.26	1	6	24	33	6	5	3	47	25
1.1.5	3.95	1.43	1	6	20	37	6	3	1	47	15
1.1.6	3.15	1.41	1	6	13	40	4	0	2	46	10
1.1.7	4.95	1.27	3	7	19	33	4	4	4	45	24
1.1.8	4.62	1.20	2	7	26	26	4	9	5	44	37
1.1.9	4.00	1.50	1	7	26	25	7	7	4	43	33
1.1.10	4.35	1.27	3	7	20	26	7	6	4	43	31
1.1.11	4.47	1.54	2	7	19	31	4	6	2	43	22

* Weighted sum: Sum of the respondents weighted with the specific criteria (0,1,2,3)

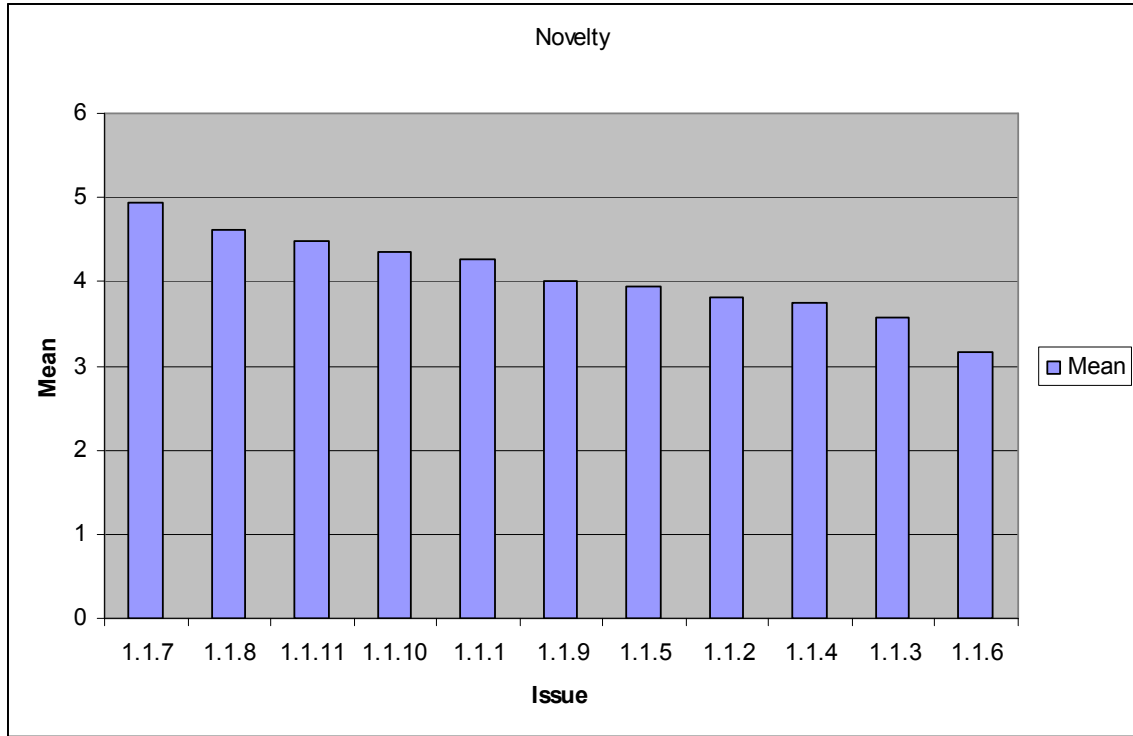


Figure 1 Sub-area 1.1 Novelty

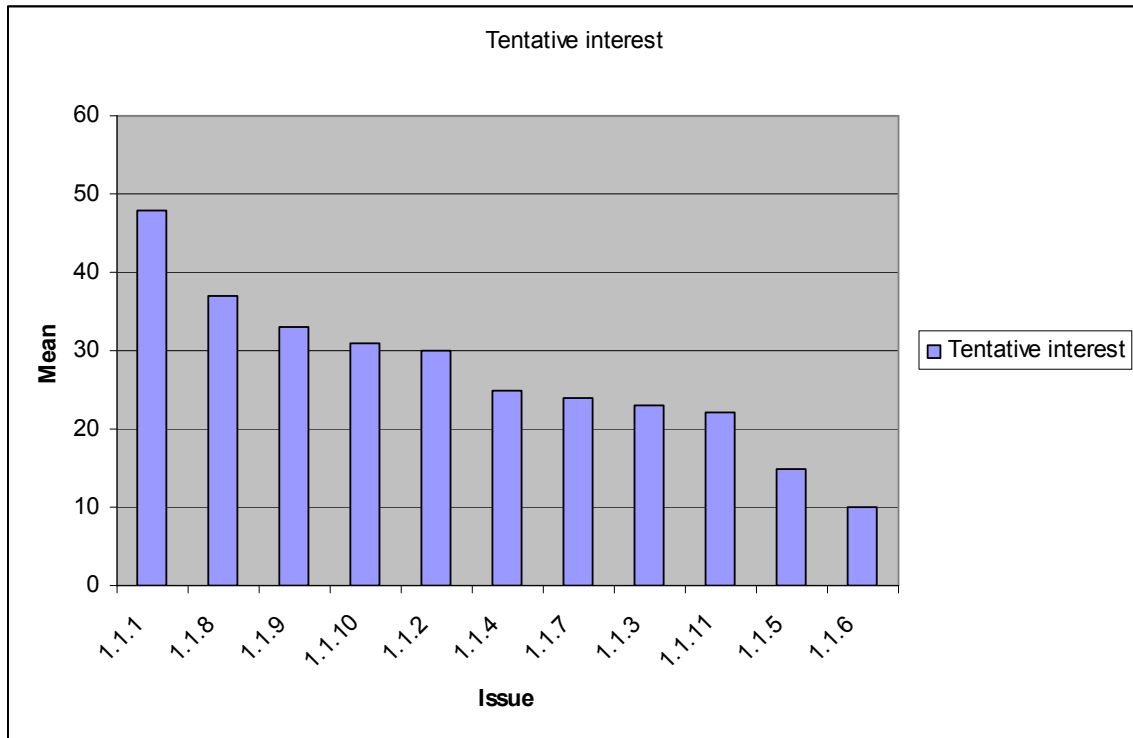


Figure 2 Sub-area 1.1 Tentative interest

Sub-area 1.2

Table 2 Sub-area 1.2 Statistics from Task 2

Issue	Novelty					Tentative interest					
	Mean	Std	min	max	respodents	0	1	2	3	Respodents	Weighted sum
1.2.1	3.76	1.26	1	6	21	27	7	3	4	41	25
1.2.2	4.05	1.75	1	7	19	21	5	9	1	36	26
1.2.3	3.29	1.68	1	7	21	24	6	4	2	36	20
1.2.4	4.20	1.21	2	6	15	25	5	5	1	36	18
1.2.5	4.40	1.47	1	6	20	22	3	9	2	36	27
1.2.6	4.63	1.77	1	7	19	22	6	2	4	34	22
1.2.7	4.81	1.28	3	7	16	23	2	6	3	34	23
1.2.8	4.23	1.74	1	7	13	22	4	6	2	34	22
1.2.9	4.57	1.22	2	7	14	27	0	4	5	36	23
1.2.10	4.00	1.46	2	7	15	24	4	3	3	34	19
1.2.11	4.33	1.80	1	7	15	24	2	6	2	34	20
1.2.12	4.33	1.44	2	7	12	27	2	3	2	34	14
1.2.13	4.43	1.22	3	7	14	25	3	4	3	35	20

* Weighted sum: Sum of the respondents weighted with the specific criteria (0,1,2,3)

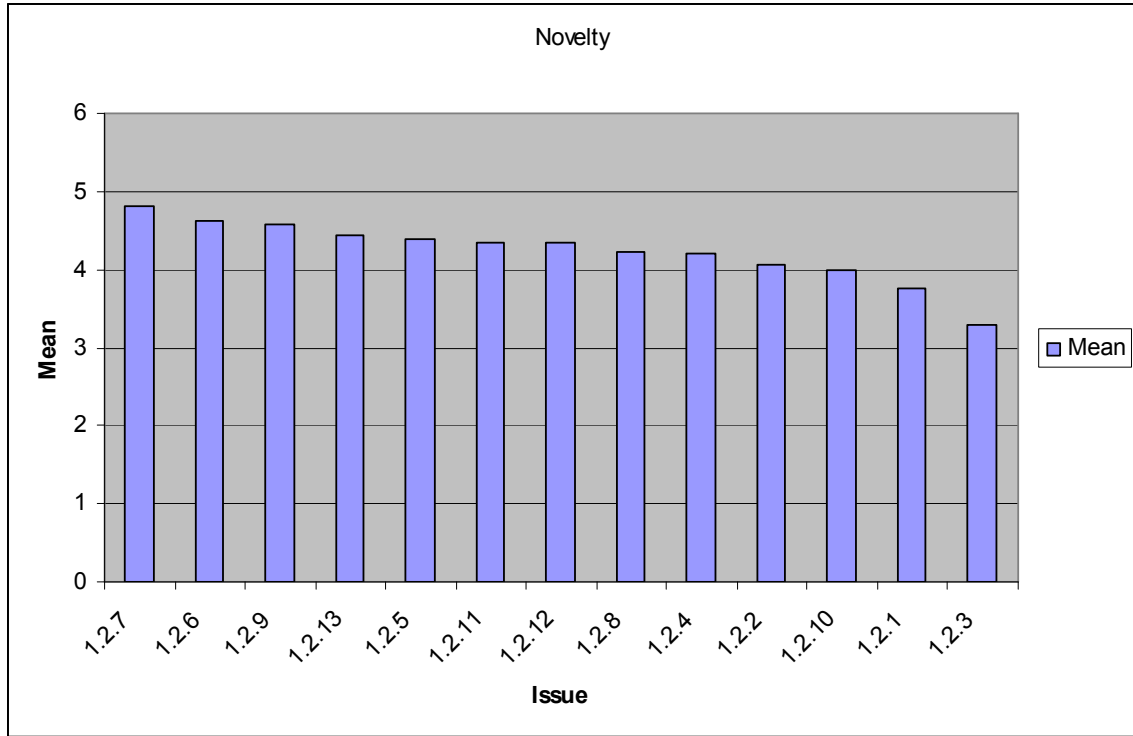


Figure 3 Sub-area 1.2 Novelty

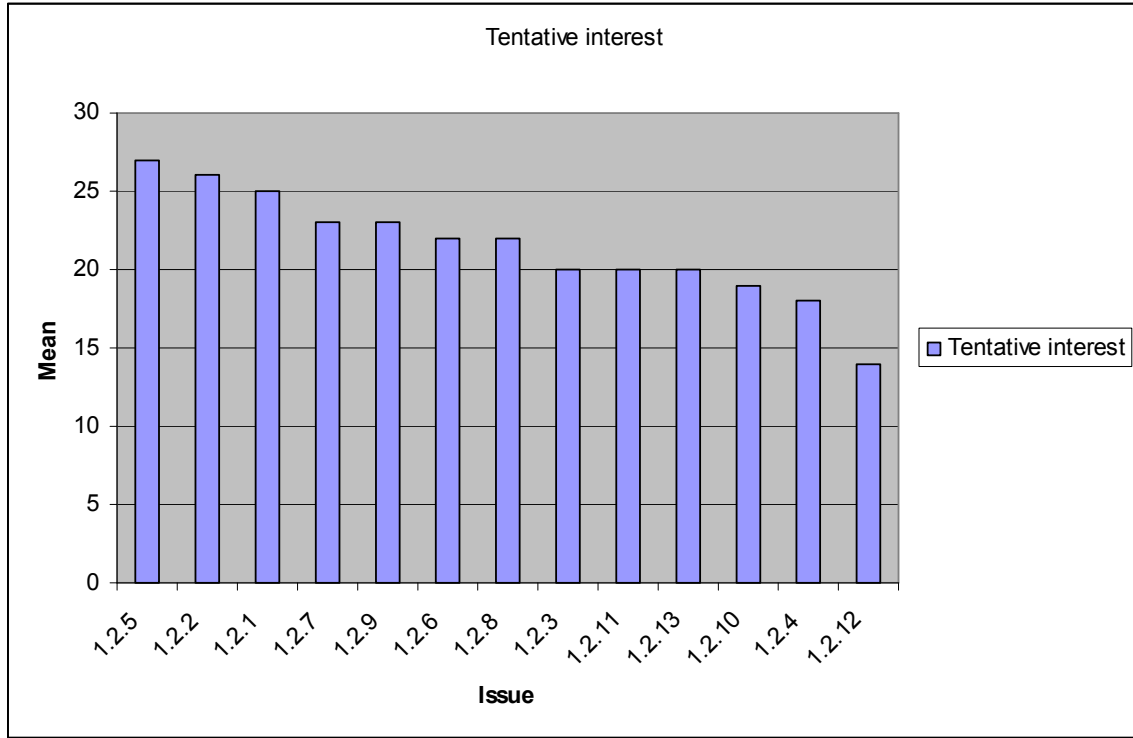


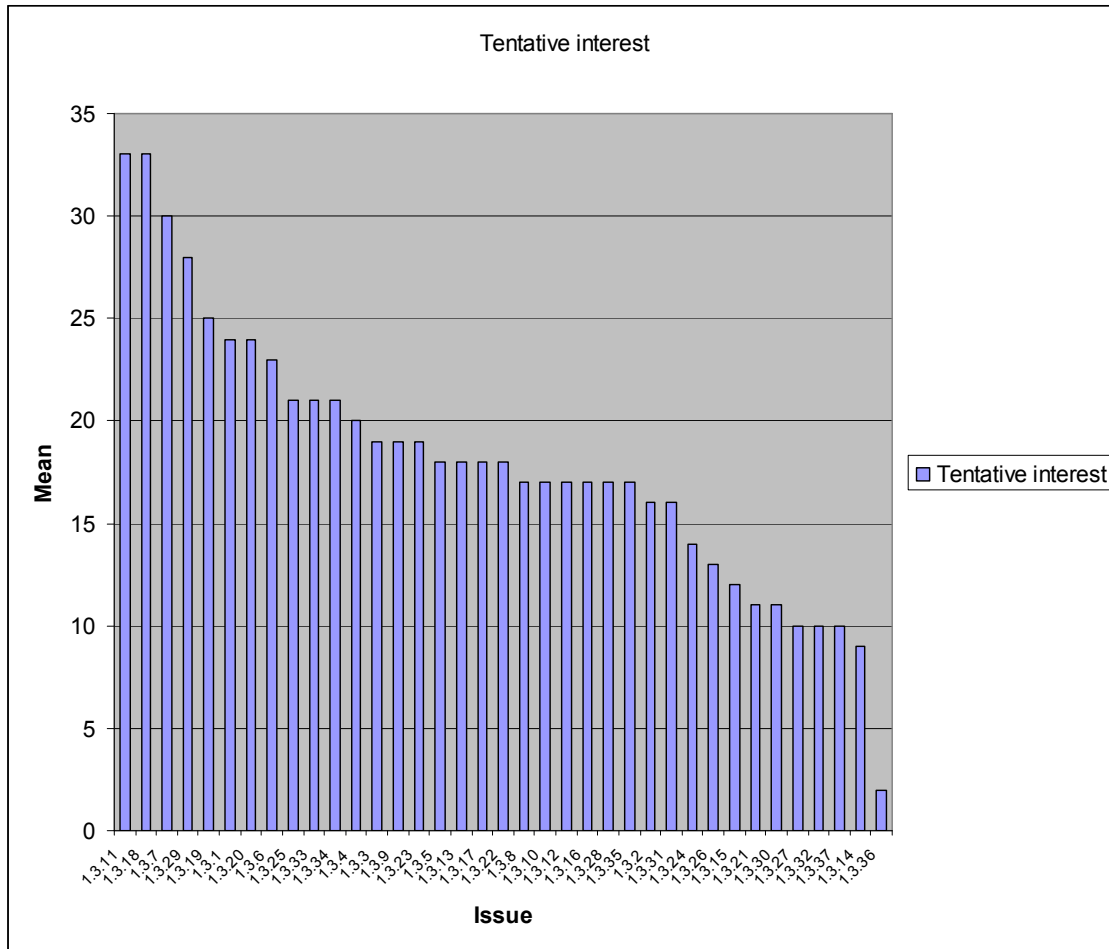
Figure 4 Sub-area 1.2 Tentative interest

Sub-area 1.3

Table 3 Sub-area 1.3 Statistics from Task 2

Issue	Novelty					Tentative interest					
	Mean	Std	min	max	respondents	0	1	2	3	Respondents	Weighted sum*
1.3.1	3.67	1.03	2	5	18	48	2	5	4	59	24
1.3.2	3.92	1.16	2	6	12	46	3	5	1	55	16
1.3.3	3.84	1.21	2	6	19	42	5	7	0	54	19
1.3.4	3.64	1.65	1	6	14	42	4	5	2	53	20
1.3.5	4.00	1.84	1	7	14	44	3	3	3	53	18
1.3.6	5.00	1.04	3	6	12	42	3	4	4	53	23
1.3.7	4.11	1.23	2	6	18	39	1	7	5	52	30
1.3.8	3.92	2.15	1	7	12	44	2	3	3	52	17
1.3.9	4.14	1.46	2	7	14	43	2	4	3	52	19
1.3.10	4.13	1.31	3	7	16	41	6	4	1	52	17
1.3.11	5.05	1.24	3	7	21	34	6	6	5	51	33
1.3.12	4.50	1.45	3	7	12	43	2	3	3	51	17
1.3.13	3.64	1.39	2	6	14	41	3	3	3	50	18
1.3.14	3.60	2.17	1	7	10	46	0	3	1	50	9
1.3.15	3.22	1.92	1	6	9	45	0	6	0	51	12
1.3.16	4.45	1.37	2	6	11	40	2	6	1	49	17
1.3.17	4.17	1.34	3	7	12	39	3	6	1	49	18
1.3.18	4.11	1.70	1	7	19	33	5	5	6	49	33
1.3.19	4.39	1.72	1	7	18	38	2	4	5	49	25
1.3.20	4.19	1.60	2	7	16	36	2	5	4	47	24
1.3.21	3.00	1.66	1	5	9	41	2	3	1	47	11
1.3.22	4.80	1.62	3	7	10	40	0	3	4	47	18
1.3.23	4.29	1.73	1	7	14	36	5	4	2	47	19
1.3.24	3.85	1.46	2	6	13	39	2	6	0	47	14
1.3.25	4.20	1.82	1	7	15	38	2	5	3	48	21
1.3.26	3.70	1.64	2	6	10	41	0	2	3	46	13
1.3.27	3.00	1.41	1	5	9	41	0	2	2	45	10
1.3.28	3.79	1.53	1	6	14	36	2	3	3	44	17
1.3.29	4.60	1.39	2	7	20	30	3	8	3	44	28
1.3.30	4.22	1.39	2	6	9	37	2	3	1	43	11
1.3.31	4.25	2.14	1	7	12	36	1	3	3	43	16
1.3.32	3.55	1.29	2	6	11	37	3	2	1	43	10
1.3.33	3.71	1.21	2	6	17	33	4	4	3	44	21
1.3.34	3.67	1.59	1	6	15	31	4	4	3	42	21
1.3.35	4.50	1.65	1	6	14	36	2	3	3	44	17
1.3.36	4.20	1.48	2	6	5	41	0	1	0	42	2
1.3.37	2.64	1.60	1	5	14	36	2	4	0	42	10

* Weighted sum: Sum of the respondents weighted with the specific criteria (0,1,2,3)



Sub-area 1.4

Table 4 Sub-area 1.4 Statistics from Task 2

Issue	Novelty					Tentative interest					
	Mean	Std	min	max	respodents	0	1	2	3	Respodents	Weighted sum
1.4.1	4.59	1.77	1	7	17	20	6	5	3	34	25
1.4.2	3.14	1.66	1	6	14	26	2	4	1	33	13
1.4.3	3.31	1.89	1	7	13	26	3	1	2	32	11
1.4.4	4.19	1.64	1	7	16	20	5	5	2	32	21
1.4.5	3.08	1.93	1	6	13	25	1	4	1	31	12
1.4.6	3.53	1.41	1	5	15	21	3	5	2	31	19
1.4.7	3.70	1.77	1	7	10	26	1	0	4	31	13
1.4.8	3.23	1.42	1	6	13	21	4	5	0	30	14

* Weighted sum: Sum of the respondents weighted with the specific criteria (0,1,2,3)

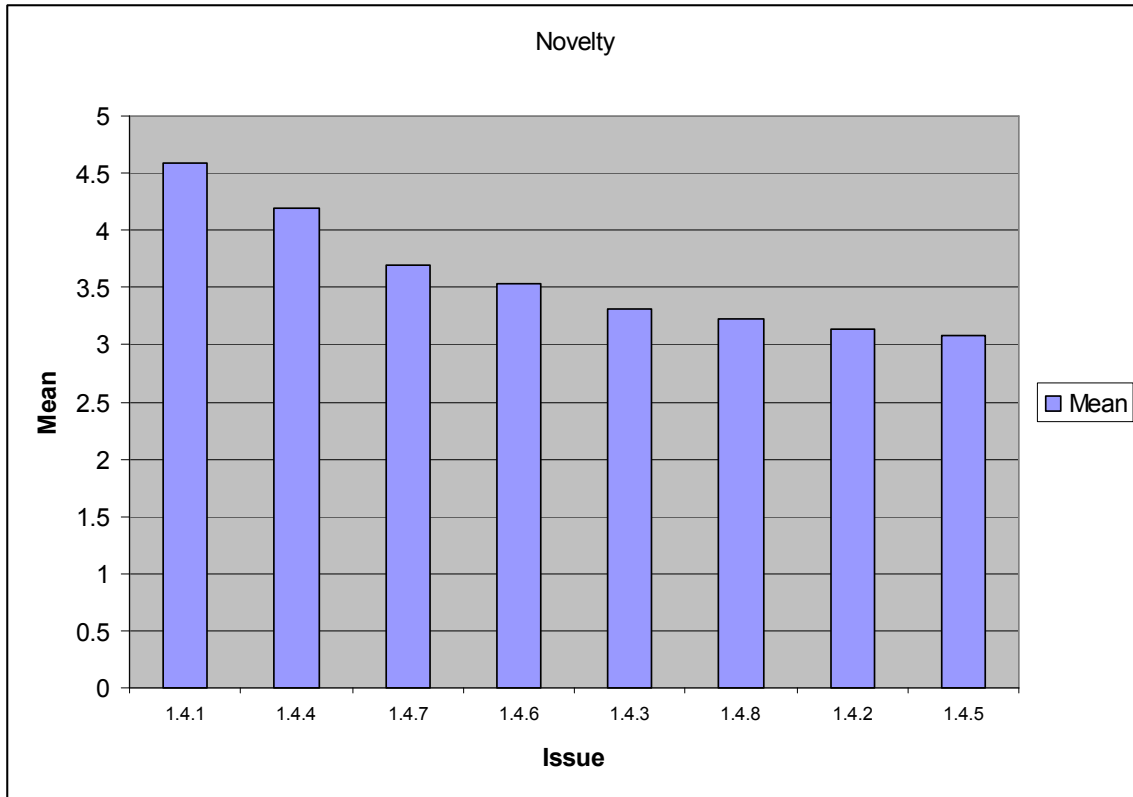


Figure 7 Sub-area 1.4 Novelty

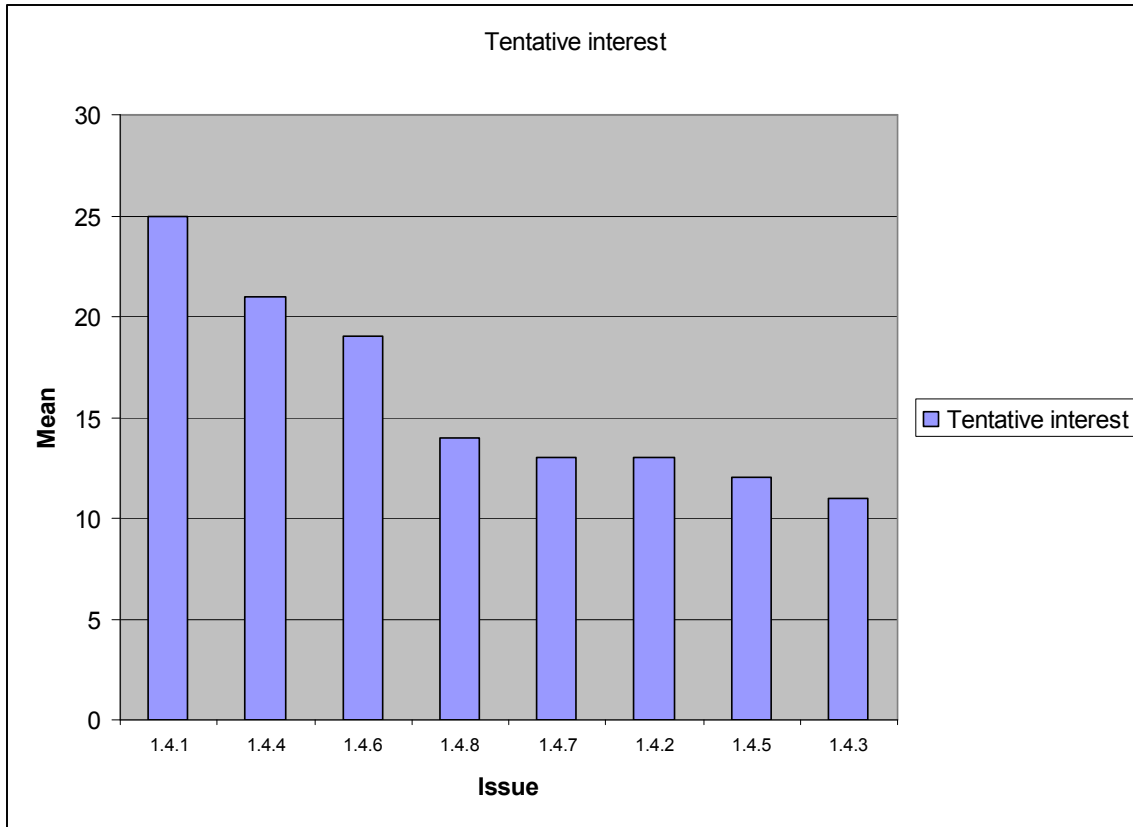


Figure 8 Sub-area 1.4 Tentative interest

Sub-area 1.5

Table 5 Sub-area 1.5 Statistics from Task 2

Issue	Novelty					Tentative interest					
	Mean	Std	min	max	respodents	0	1	2	3	Respodents	Weighted sum
1.5.1	3.93	1.27	2	6	14	38	3	0	4	45	15
1.5.2	3.64	1.43	1	5	11	38	3	1	0	42	5
1.5.3	2.93	1.71	1	7	15	35	3	2	2	42	13
1.5.4	3.08	1.66	1	6	13	37	2	2	0	41	6
1.5.5	4.00	1.33	2	6	10	35	2	2	1	40	9
1.5.6	4.00	1.00	3	6	9	33	6	1	0	40	8
1.5.7	5.09	1.22	3	7	11	35	1	2	2	40	11
1.5.8	3.55	2.02	1	7	11	37	0	1	2	40	8
1.5.9	3.50	1.58	2	6	10	35	2	2	1	40	9
1.5.10	3.50	1.56	1	6	14	32	4	4	0	40	12
1.5.11	3.40	1.51	1	5	10	35	2	3	0	40	8
1.5.12	4.67	1.41	3	7	9	35	0	2	3	40	13
1.5.13	4.13	1.63	1	7	16	31	2	4	3	40	19
1.5.14	3.93	1.91	1	6	15	34	3	2	2	41	13
1.5.15	4.17	1.80	1	7	12	33	2	3	2	40	14
1.5.16	4.19	1.52	2	6	16	30	2	2	6	40	24
1.5.17	2.86	1.95	1	6	7	38	0	1	0	39	2
1.5.18	3.10	1.60	1	6	10	36	1	0	2	39	7

* Weighted sum: Sum of the respondents weighted with the specific criteria (0,1,2,3)

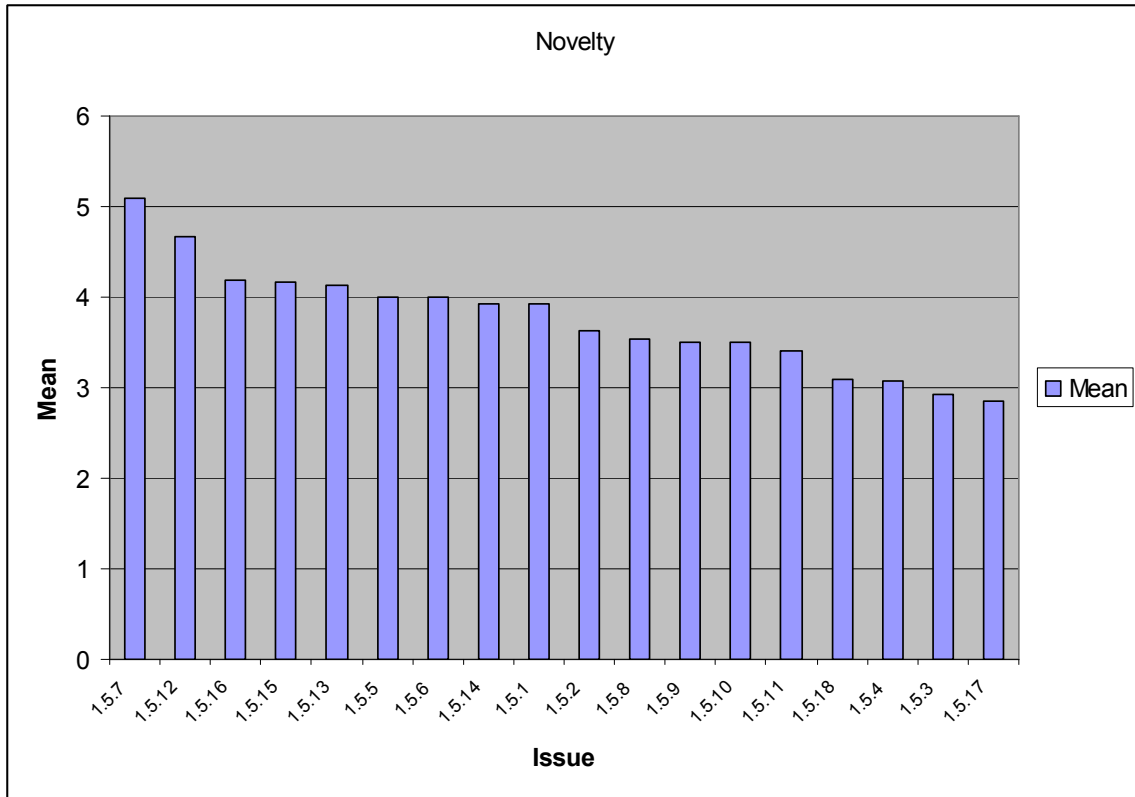


Figure 9 Sub-area 1.5 Novelty

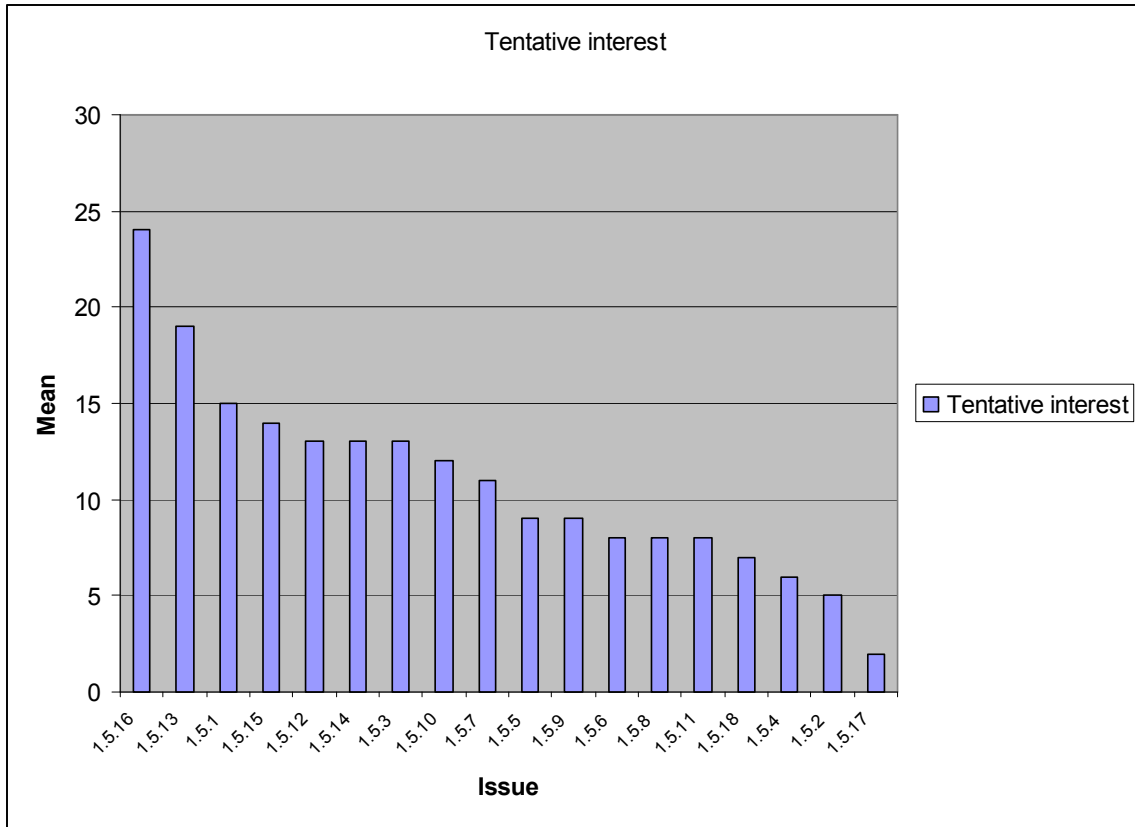


Figure 10 Sub-area 1.5 Tentative interest

Sub-area 1.N

Table 6 Sub-area 1.N Statistics from Task 2

Issue	Novelty					Tentative interest					
	Mean	Std	min	max	respodents	0	1	2	3	Respodents	Weighted sum
1.N.1	2.92	1.16	1	5	12	34	0	3	0	37	6
1.N.2	4.50	1.45	2	7	12	27	2	5	2	36	18
1.N.3	2.90	1.60	1	6	10	33	2	0	1	36	5
1.N.4	4.63	1.50	1	7	16	26	3	4	4	37	23
1.N.5	3.55	1.86	1	7	11	29	1	4	1	35	12
1.N.6	4.44	1.31	2	6	16	23	3	9	1	36	24
1.N.7	4.14	2.19	1	7	7	32	2	0	1	35	5

* Weighted sum: Sum of the respondents weighted with the specific criteria (0,1,2,3)

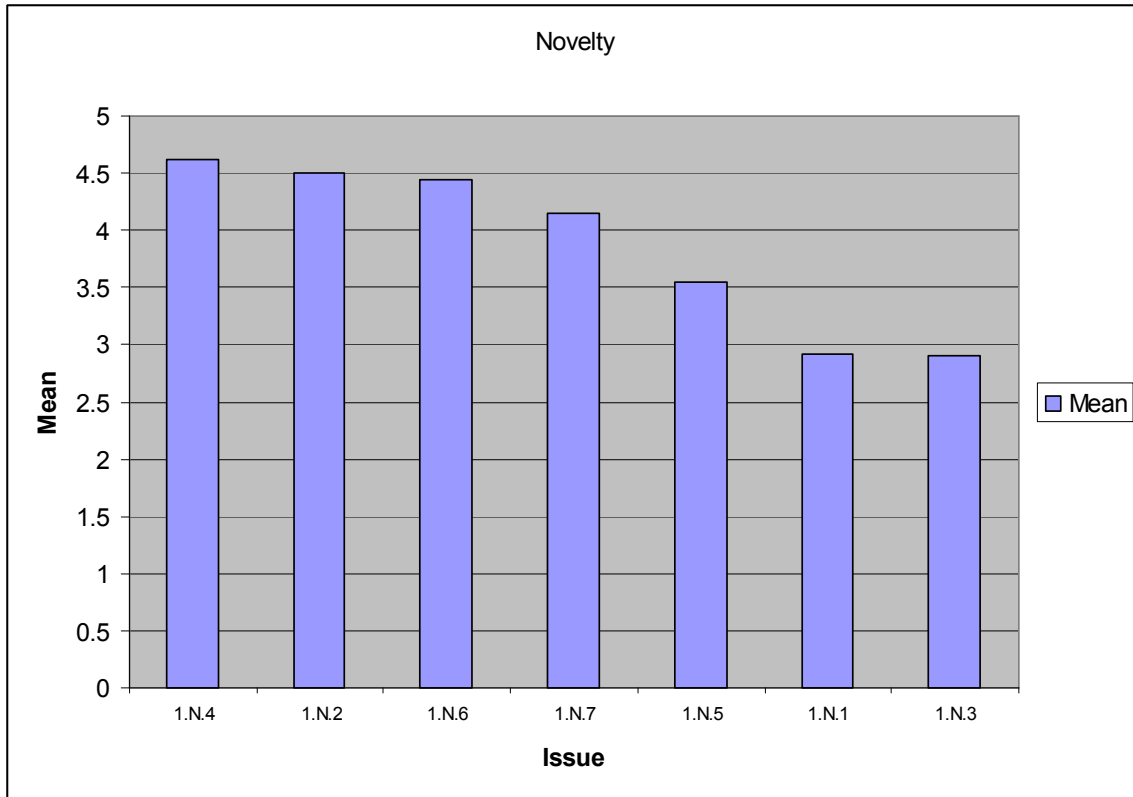


Figure 11 Sub-area 1.N Novelty

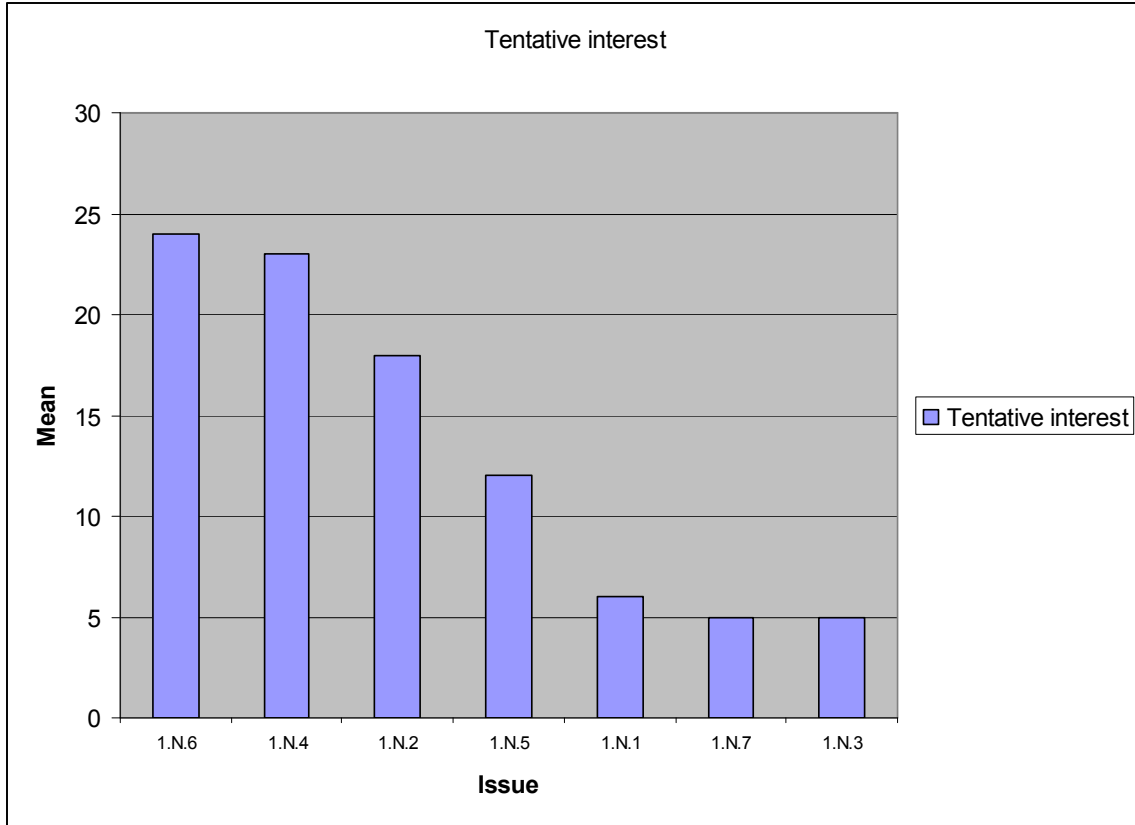


Figure 12 Sub-area 1.N Tentative interest