



Collaborative shaping of Research Agendas in WoodWisdom-net

Workshop for researchers and industrial leaders

Sustainable forestry

Wednesday February 15, 2006 Helsinki

Results from Task 2

Contents

Sub-area 1.3	3
Sub-area 3.1	6
Sub-area 3.2	9
Sub-area 3.3	12
Sub-area 3.4	15
Sub-area 3.5	18
Sub-area 3.N	21
Sub-area 4.1	24
Sub-area 4.2	27
Sub-area 4.N	30

Sub-area 1.3

Table 1 Sub-area 1.3 Statistics from Task 2

Issue	Novelty					Tentative interest					
	Mean	Std	min	max	respodents	0	1	2	3	Respodents	Weighted sum*
1.3.1	3.67	1.03	2	5	18	48	2	5	4	59	24
1.3.2	3.92	1.16	2	6	12	46	3	5	1	55	16
1.3.3	3.84	1.21	2	6	19	42	5	7	0	54	19
1.3.4	3.64	1.65	1	6	14	42	4	5	2	53	20
1.3.5	4.00	1.84	1	7	14	44	3	3	3	53	18
1.3.6	5.00	1.04	3	6	12	42	3	4	4	53	23
1.3.7	4.11	1.23	2	6	18	39	1	7	5	52	30
1.3.8	3.92	2.15	1	7	12	44	2	3	3	52	17
1.3.9	4.14	1.46	2	7	14	43	2	4	3	52	19
1.3.10	4.13	1.31	3	7	16	41	6	4	1	52	17
1.3.11	5.05	1.24	3	7	21	34	6	6	5	51	33
1.3.12	4.50	1.45	3	7	12	43	2	3	3	51	17
1.3.13	3.64	1.39	2	6	14	41	3	3	3	50	18
1.3.14	3.60	2.17	1	7	10	46	0	3	1	50	9
1.3.15	3.22	1.92	1	6	9	45	0	6	0	51	12
1.3.16	4.45	1.37	2	6	11	40	2	6	1	49	17
1.3.17	4.17	1.34	3	7	12	39	3	6	1	49	18
1.3.18	4.11	1.70	1	7	19	33	5	5	6	49	33
1.3.19	4.39	1.72	1	7	18	38	2	4	5	49	25
1.3.20	4.19	1.60	2	7	16	36	2	5	4	47	24
1.3.21	3.00	1.66	1	5	9	41	2	3	1	47	11
1.3.22	4.80	1.62	3	7	10	40	0	3	4	47	18
1.3.23	4.29	1.73	1	7	14	36	5	4	2	47	19
1.3.24	3.85	1.46	2	6	13	39	2	6	0	47	14
1.3.25	4.20	1.82	1	7	15	38	2	5	3	48	21
1.3.26	3.70	1.64	2	6	10	41	0	2	3	46	13
1.3.27	3.00	1.41	1	5	9	41	0	2	2	45	10
1.3.28	3.79	1.53	1	6	14	36	2	3	3	44	17
1.3.29	4.60	1.39	2	7	20	30	3	8	3	44	28
1.3.30	4.22	1.39	2	6	9	37	2	3	1	43	11
1.3.31	4.25	2.14	1	7	12	36	1	3	3	43	16
1.3.32	3.55	1.29	2	6	11	37	3	2	1	43	10
1.3.33	3.71	1.21	2	6	17	33	4	4	3	44	21
1.3.34	3.67	1.59	1	6	15	31	4	4	3	42	21
1.3.35	4.50	1.65	1	6	14	36	2	3	3	44	17
1.3.36	4.20	1.48	2	6	5	41	0	1	0	42	2
1.3.37	2.64	1.60	1	5	14	36	2	4	0	42	10

* Weighted sum: Sum of the respondents weighted with the specific criteria (0,1,2,3)

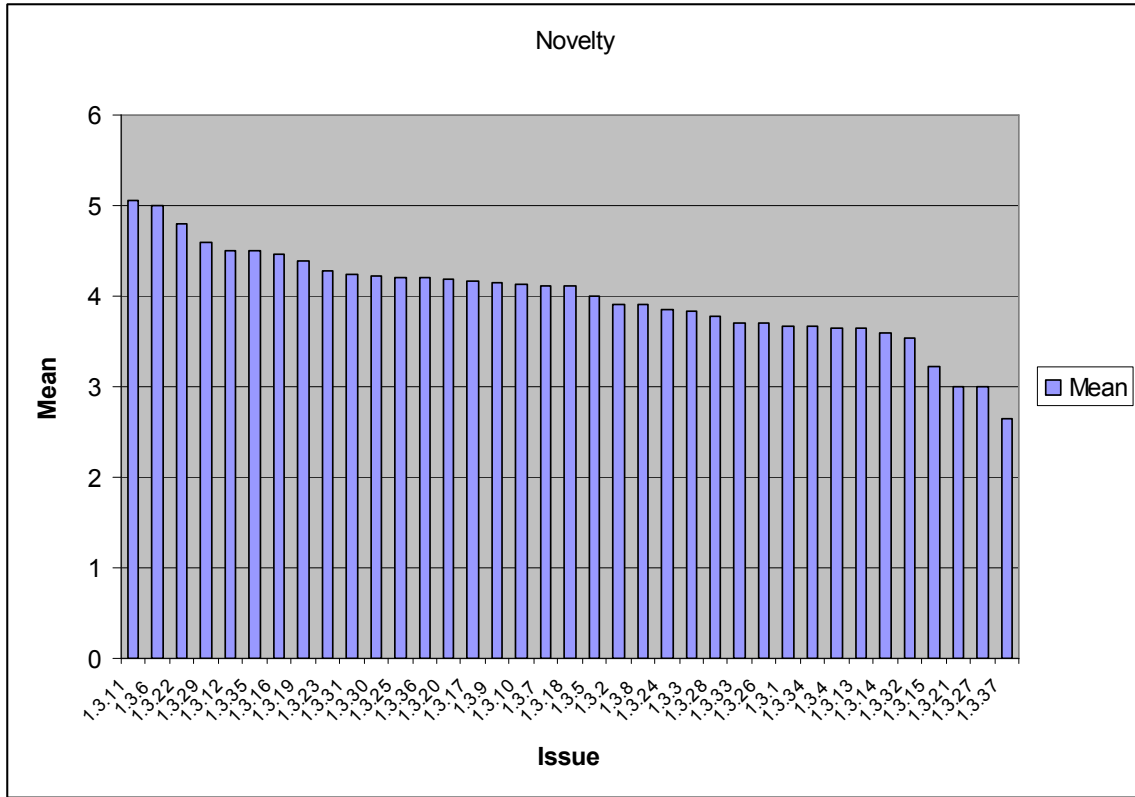
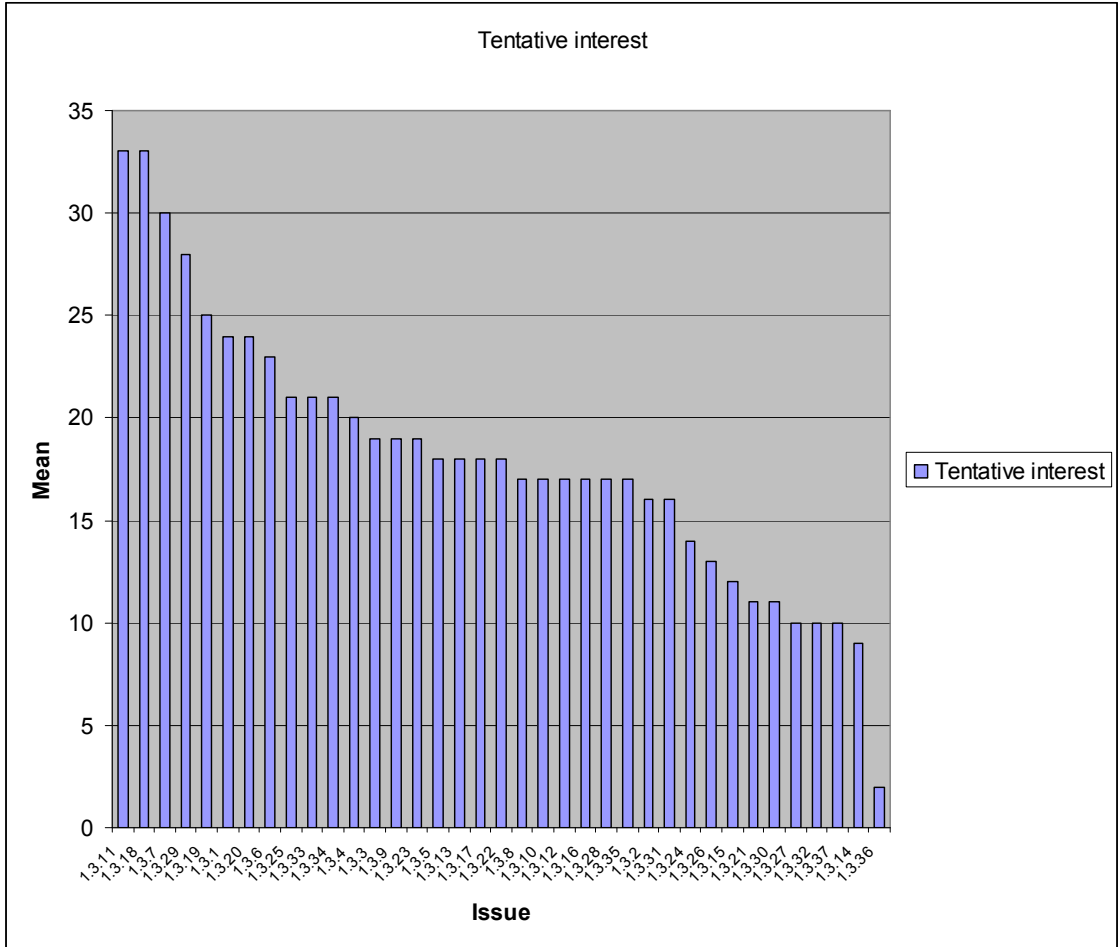


Figure 1 Sub-area 1.3 Novelty



Sub-area 3.1

Table 2 Sub-area 3.1 Statistics from Task 2

Issue	Novelty					Tentative interest					
	Mean	Std	min	max	Respondents	0	1	2	3	Respondents	Weighted sum*
3.1.1	3.23	1.23	1	7	22	45	7	6	2	60	25
3.1.2	3.78	1.90	1	7	18	46	2	7	3	58	25
3.1.3	3.83	1.47	2	7	18	46	3	9	1	59	24
3.1.4	3.13	1.51	1	7	15	44	4	4	3	55	21
3.1.5	3.00	1.36	1	5	14	45	6	2	2	55	16
3.1.6	3.00	1.18	1	5	11	48	5	0	1	54	8
3.1.7	3.13	1.13	2	5	8	52	2	0	1	55	5
3.1.8	3.76	1.56	1	7	17	40	7	3	4	54	25
3.1.9	3.58	1.16	2	5	12	45	5	2	2	54	15
3.1.10	4.31	1.38	2	6	13	46	2	6	2	56	20
3.1.11	3.67	1.23	2	6	12	45	3	3	2	53	15
3.1.12	4.29	1.53	2	7	17	39	3	8	3	53	28
3.1.13	4.29	1.53	2	7	17	39	3	8	3	53	28
3.1.14	3.36	1.45	1	6	14	43	5	4	3	55	22
3.1.15	2.00	1.18	1	4	11	47	3	2	0	52	7
3.1.16	3.87	1.30	2	6	15	43	5	3	1	52	14
3.1.17	1.88	1.36	1	4	8	48	1	3	0	52	7
3.1.18	3.38	1.71	1	7	13	41	5	3	2	51	17
3.1.19	3.58	1.16	2	5	12	41	5	3	2	51	17
3.1.20	3.64	1.78	1	6	14	39	6	4	2	51	20
3.1.21	2.40	1.51	1	5	10	49	2	1	1	53	7
3.1.22	3.62	1.39	2	6	13	43	5	2	1	51	12
3.1.23	3.50	1.20	2	5	8	47	2	0	2	51	8
3.1.24	4.38	2.00	2	7	8	45	3	1	2	51	11
3.1.25	3.67	1.23	2	6	12	40	0	7	1	48	17
3.1.26	4.53	1.93	1	7	19	34	2	6	7	49	35
3.1.27	3.00	1.29	1	5	7	45	3	0	0	48	3
3.1.28	4.24	1.52	2	7	17	35	2	7	5	49	31
3.1.29	3.62	1.98	2	7	13	39	4	1	4	48	18
3.1.30	3.23	1.24	1	5	13	43	4	1	0	48	6
3.1.31	2.80	1.14	1	5	10	42	3	1	2	48	11
3.1.32	4.81	1.60	2	7	16	36	1	4	7	48	30
3.1.33	3.50	1.65	2	6	10	43	2	2	2	49	12
3.1.34	3.73	1.22	2	6	15	39	3	5	1	48	16

* Weighted sum: Sum of the respondents weighted with the specific criteria (0,1,2,3)

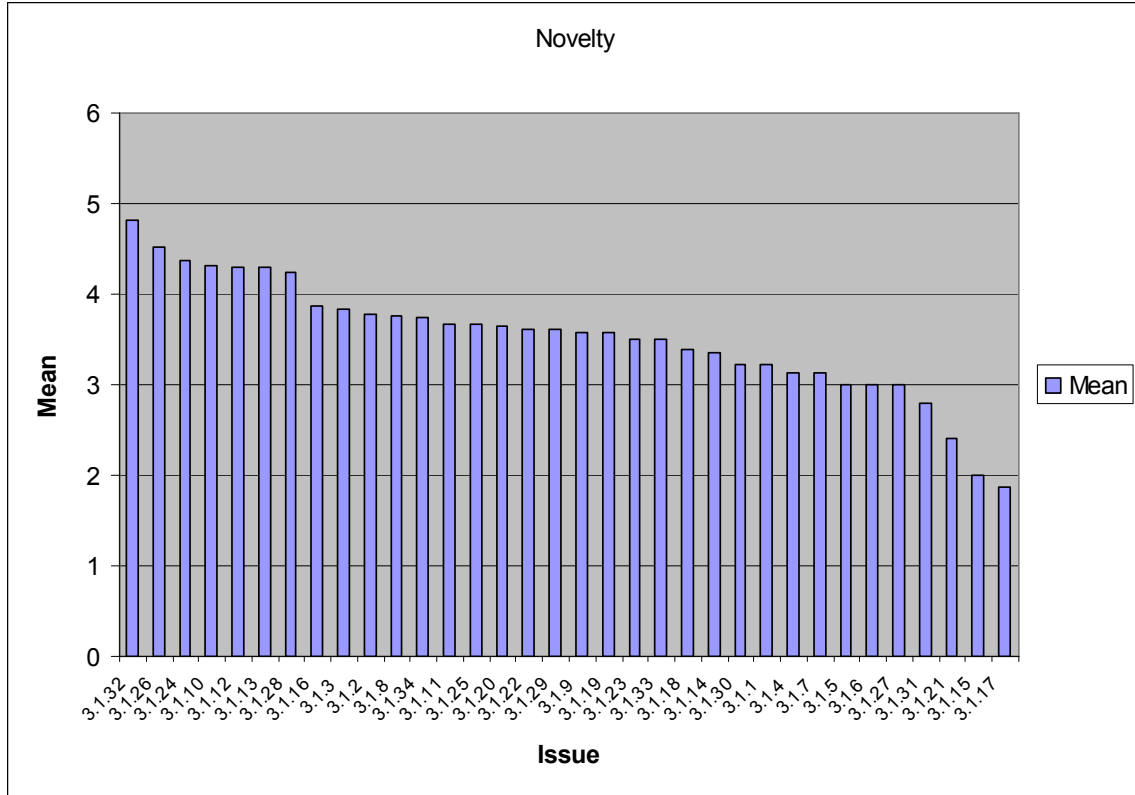


Figure 3 Sub-area 3.1 Novelty

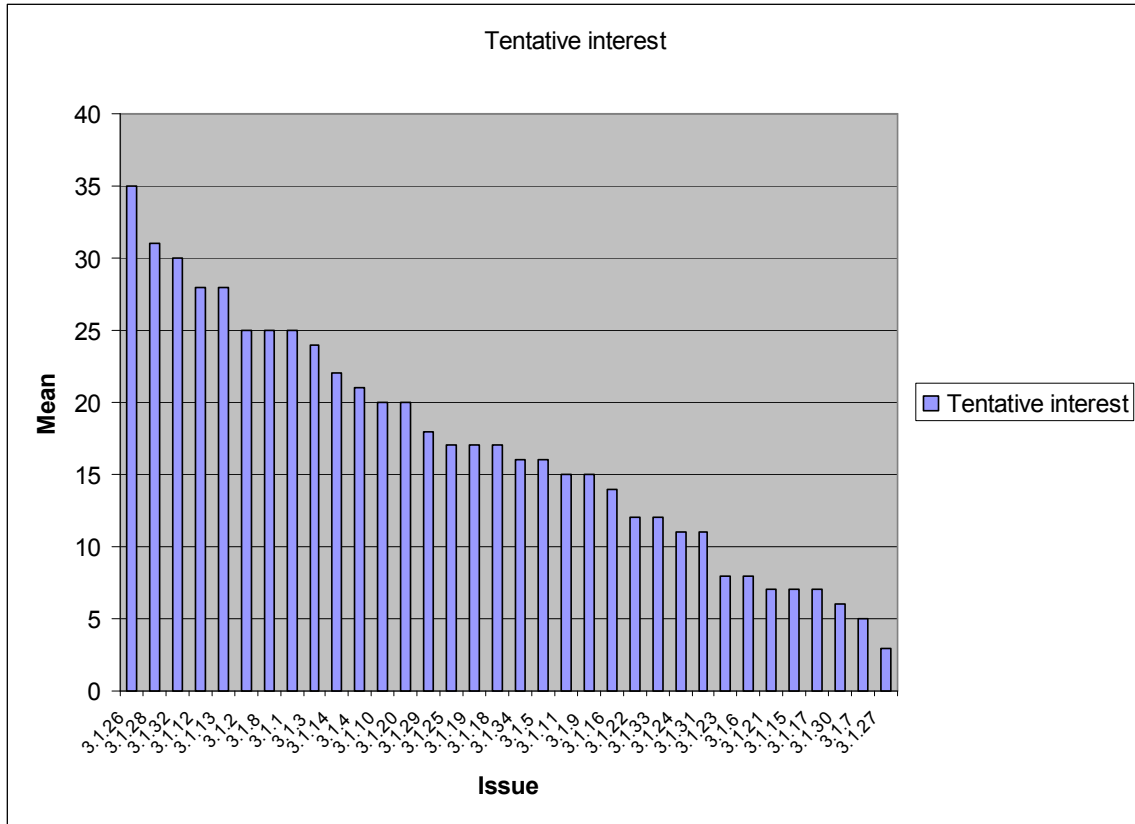


Figure 4 Sub-area 3.1 Tentative interest

Sub-area 3.2

Table 3 Sub-area 3.2 Statistics from Task 2

Issue	Novelty					Tentative interest					
	Mean	Std	min	max	Respondents	0	1	2	3	Respondents	Weighted sum*
3.2.1	3.00	1.73	1	6	11	27	1	2	2	32	11
3.2.2	3.82	1.25	2	5	11	25	2	1	2	30	10
3.2.3	3.20	1.62	1	6	10	27	1	0	1	29	4
3.2.4	3.10	0.99	1	4	10	24	4	1	1	30	9
3.2.5	3.11	1.05	1	5	9	25	0	2	2	29	10
3.2.6	3.20	1.55	1	5	10	26	0	1	2	29	8
3.2.7	3.17	1.34	1	5	12	23	2	1	3	29	13
3.2.8	3.10	1.73	1	7	10	27	2	0	0	29	2
3.2.9	4.08	1.26	2	6	13	23	3	1	2	29	11
3.2.10	3.38	1.66	1	6	13	21	3	5	1	30	16
3.2.11	2.56	1.01	1	4	9	27	2	0	0	29	2
3.2.12	4.15	1.63	1	7	13	23	3	1	2	29	11
3.2.13	2.44	1.24	1	4	9	27	0	1	1	29	5
3.2.14	3.92	1.44	2	7	12	23	2	1	2	28	10
3.2.15	3.30	1.34	1	5	10	25	1	1	1	28	6
3.2.16	2.67	0.87	1	4	9	25	1	0	2	28	7
3.2.17	3.10	1.37	1	6	10	23	2	1	2	28	10
3.2.18	2.78	1.09	1	5	9	26	1	0	1	28	4
3.2.19	5.08	1.44	3	7	12	19	3	4	2	28	17
3.2.20	4.42	1.83	2	7	12	21	2	3	2	28	14
3.2.21	4.18	0.87	3	5	11	22	3	2	1	28	10
3.2.22	4.44	1.33	3	7	9	22	1	3	2	28	13
3.2.23	3.82	2.36	1	7	11	23	2	0	3	28	11

* Weighted sum: Sum of the respondents weighted with the specific criteria (0,1,2,3)

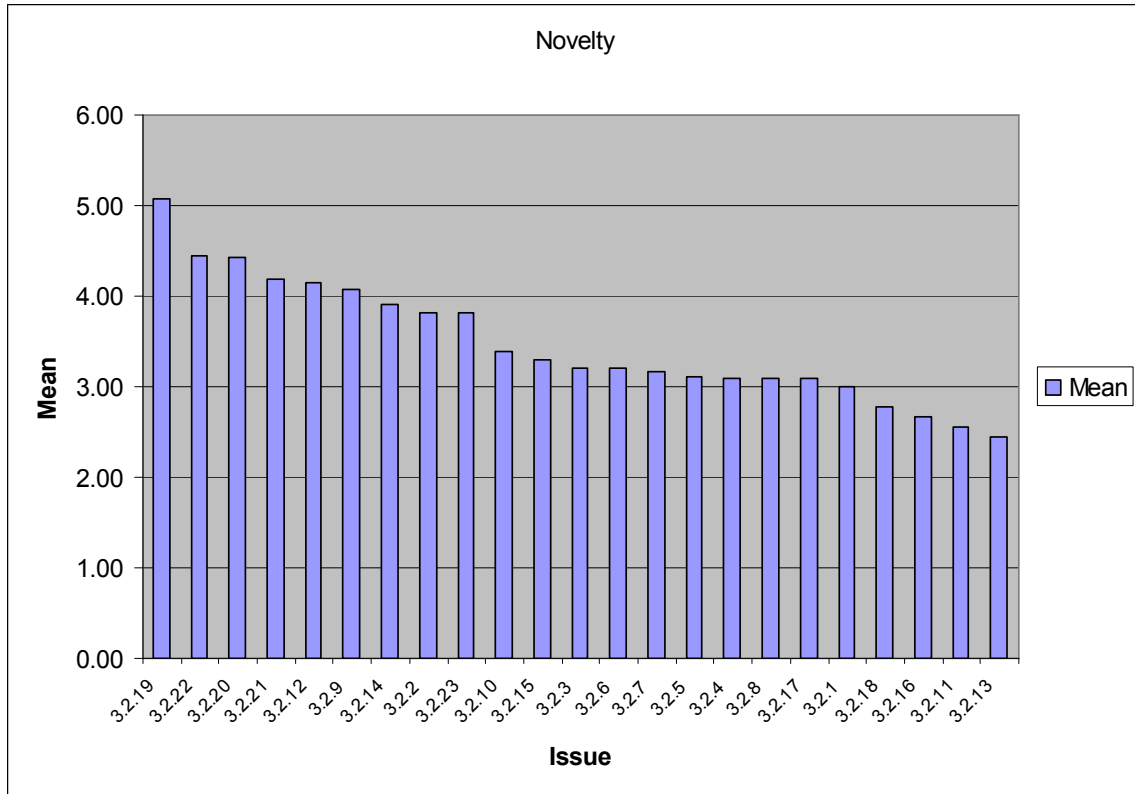


Figure 5 Sub-area 3.2 Novelty

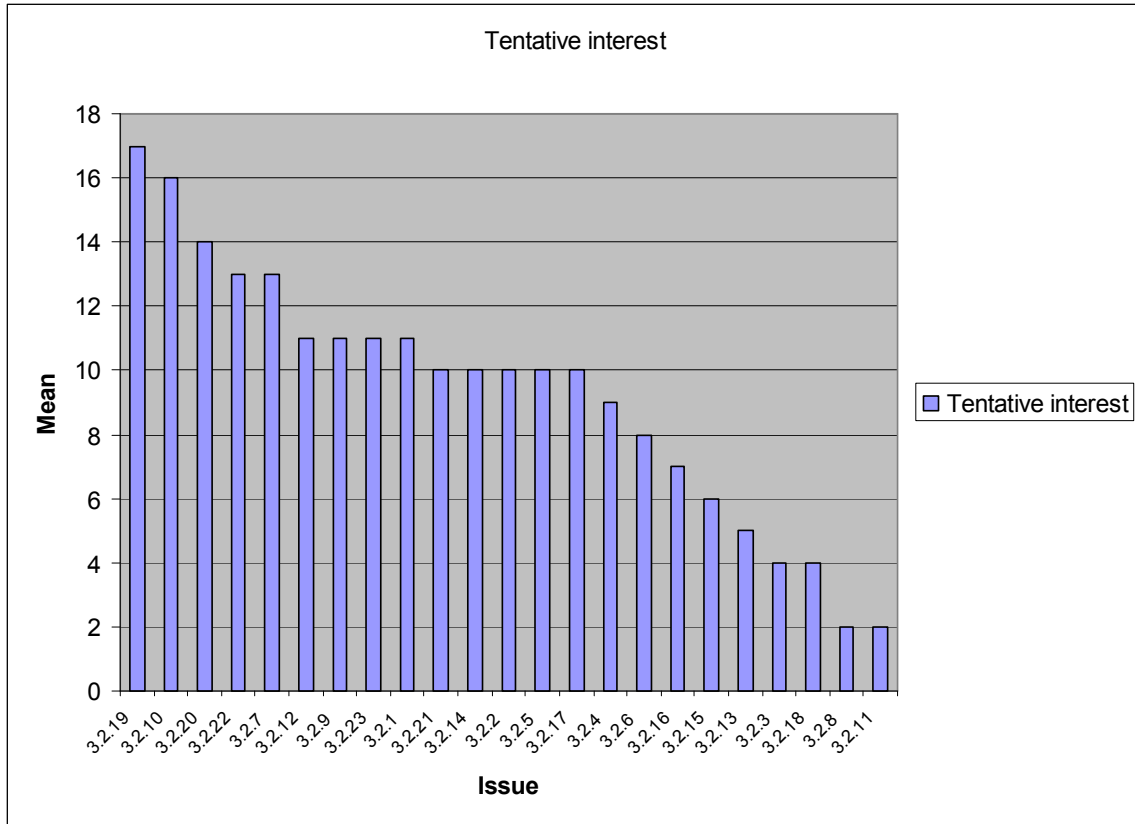


Figure 6 Sub-area 3.2 Tentative interest

Sub-area 3.3

Table 4 Sub-area 3.3 Statistics from Task 2

Issue	Novelty					Tentative interest					
	Mean	Std	min	max	Respondents	0	1	2	3	Respondents	Weighted sum*
3.3.1	3.36	2.06	1	7	14	34	4	3	1	42	13
3.3.2	4.71	2.14	1	7	17	29	3	5	5	42	28
3.3.3	3.45	1.13	1	5	11	37	2	2	0	41	6
3.3.4	4.11	1.17	3	6	9	35	1	4	1	41	12
3.3.5	3.00	1.61	1	6	11	36	3	2	0	41	7
3.3.6	3.53	1.73	1	7	15	30	5	2	4	41	21
3.3.7	4.50	2.26	1	7	18	30	3	3	7	43	30
3.3.8	4.11	2.23	1	7	19	27	5	4	6	42	31
3.3.9	3.22	1.30	1	5	9	38	2	1	0	41	4
3.3.10	3.88	2.32	1	7	17	31	4	1	4	40	18
3.3.11	3.47	1.23	2	5	17	32	4	3	1	40	13
3.3.12	2.93	1.22	1	5	15	36	3	1	1	41	8
3.3.13	4.30	1.64	3	7	10	35	1	2	2	40	11
3.3.14	3.56	1.15	2	5	18	26	6	6	2	40	24
3.3.15	3.80	2.26	1	7	20	27	5	2	6	40	27
3.3.16	3.20	1.55	1	5	10	37	1	2	0	40	5
3.3.17	3.40	1.40	1	6	15	33	2	5	2	42	18
3.3.18	4.13	1.46	2	6	8	36	1	3	1	41	10
3.3.19	3.00	1.03	1	5	16	29	8	1	2	40	16
3.3.20	3.21	2.12	1	7	14	35	0	2	3	40	13
3.3.21	4.12	2.01	1	7	25	24	5	6	6	41	35
3.3.22	3.79	1.25	2	6	14	30	3	6	0	39	15

* Weighted sum: Sum of the respondents weighted with the specific criteria (0,1,2,3)

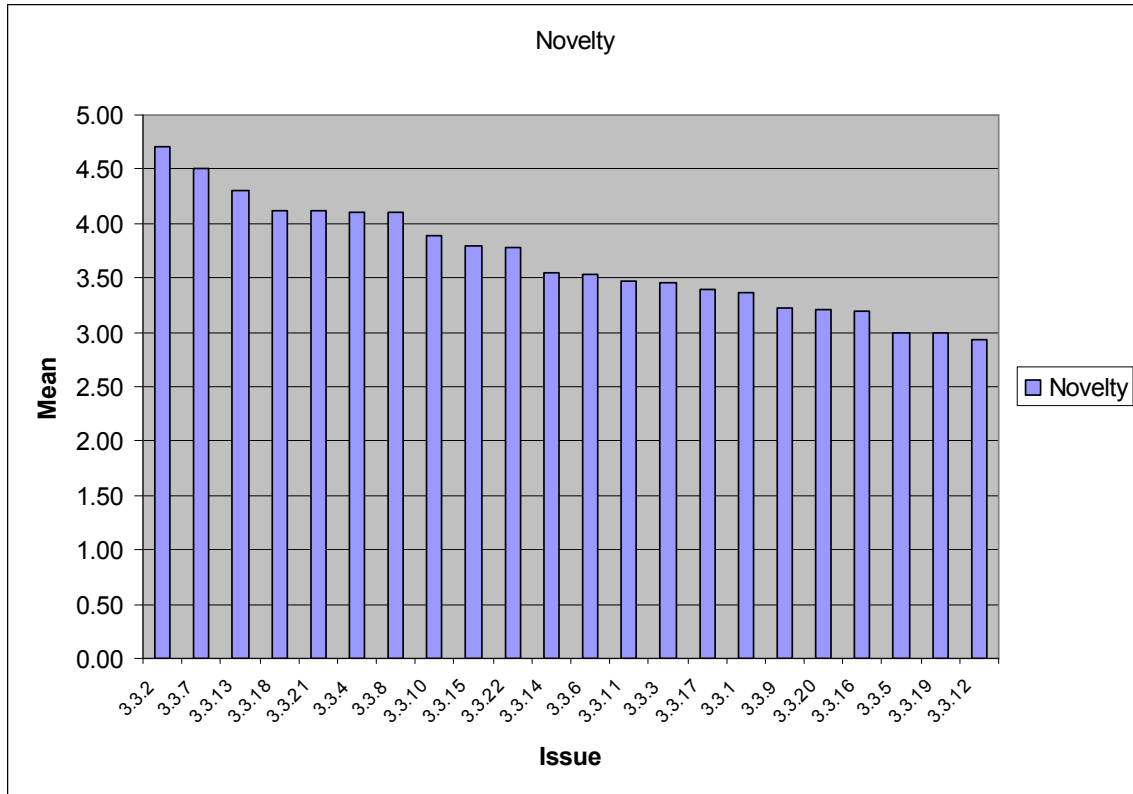


Figure 7 Sub-area 3.3 Novelty

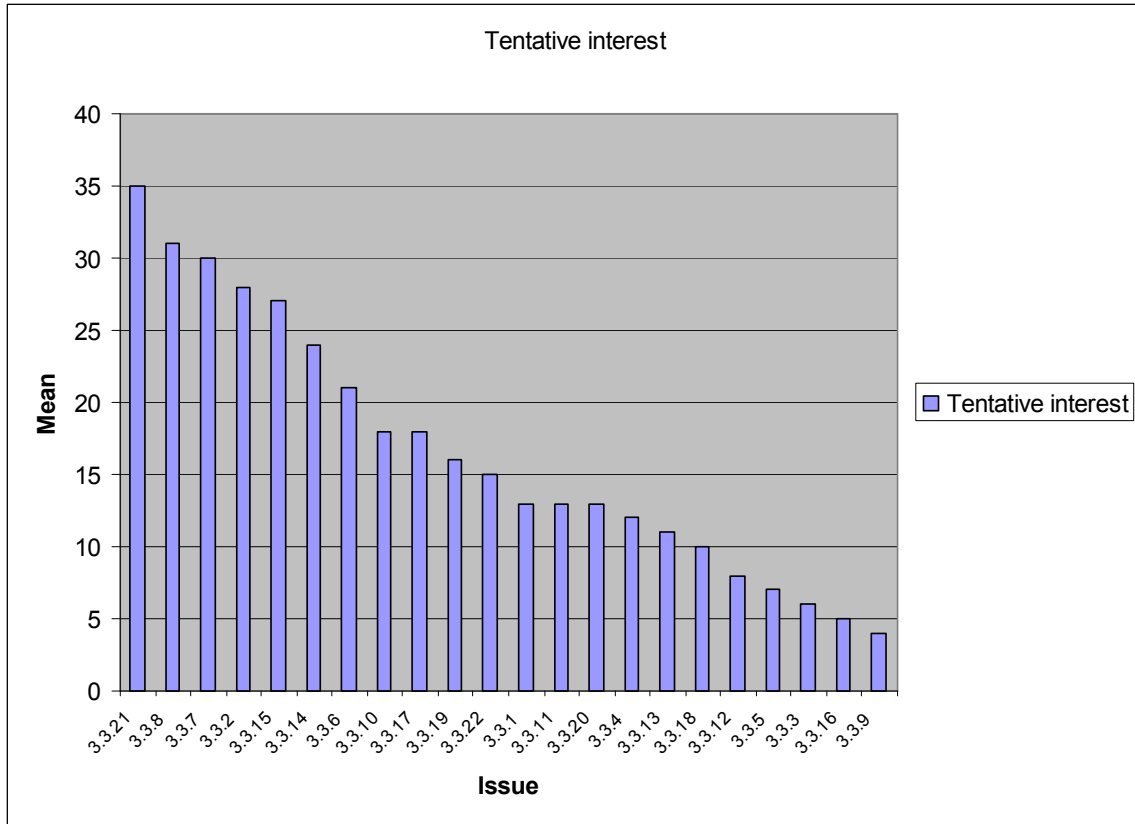


Figure 8 Sub-area 3.3 Tentative interest

Sub-area 3.4

Table 5 Sub-area 3.4 Statistics from Task 2

Issue	Novelty					Tentative interest					
	Mean	Std	min	max	Respondents	0	1	2	3	Respondents	Weighted sum
3.4.1	3.62	1.12	2	5	13	23	5	3	3	34	20
3.4.2	4.13	2.09	1	7	16	20	2	4	6	32	28
3.4.3	4.91	2.17	2	7	11	24	1	0	6	31	19
3.4.4	4.40	1.51	2	7	10	25	2	3	1	31	11
3.4.5	3.67	1.97	2	7	6	29	1	0	1	31	4
3.4.6	3.00	1.22	2	5	5	31	0	0	0	31	0
3.4.7	3.89	1.45	2	6	9	27	2	2	0	31	6
3.4.8	2.67	0.52	2	3	6	30	0	0	0	30	0
3.4.9	4.40	2.29	1	7	15	21	3	1	5	30	20
3.4.10	3.43	1.27	2	5	7	28	2	0	0	30	2
3.4.11	2.71	1.38	1	5	7	27	0	2	0	29	4
3.4.12	3.86	1.07	3	5	7	26	3	1	0	30	5
3.4.13	3.17	1.17	2	5	6	27	2	0	0	29	2
3.4.14	3.10	1.29	1	5	10	25	1	4	0	30	9
3.4.15	3.33	1.87	2	7	9	26	0	2	1	29	7
3.4.16	4.85	2.44	2	7	13	21	1	1	6	29	21
3.4.17	4.50	2.14	1	7	14	17	4	2	4	27	20
3.4.18	1.80	0.84	1	3	5	23	2	1	1	27	7
3.4.19	3.40	1.84	1	7	10	22	0	4	2	28	14
3.4.20	4.81	2.14	2	7	16	16	1	4	7	28	30
3.4.21	3.30	0.82	2	4	10	21	2	3	2	28	14
3.4.22	3.00	0.71	2	4	9	20	2	4	1	27	13
3.4.23	3.17	1.83	1	6	6	24	1	0	2	27	7

* Weighted sum: Sum of the respondents weighted with the specific criteria (0,1,2,3)

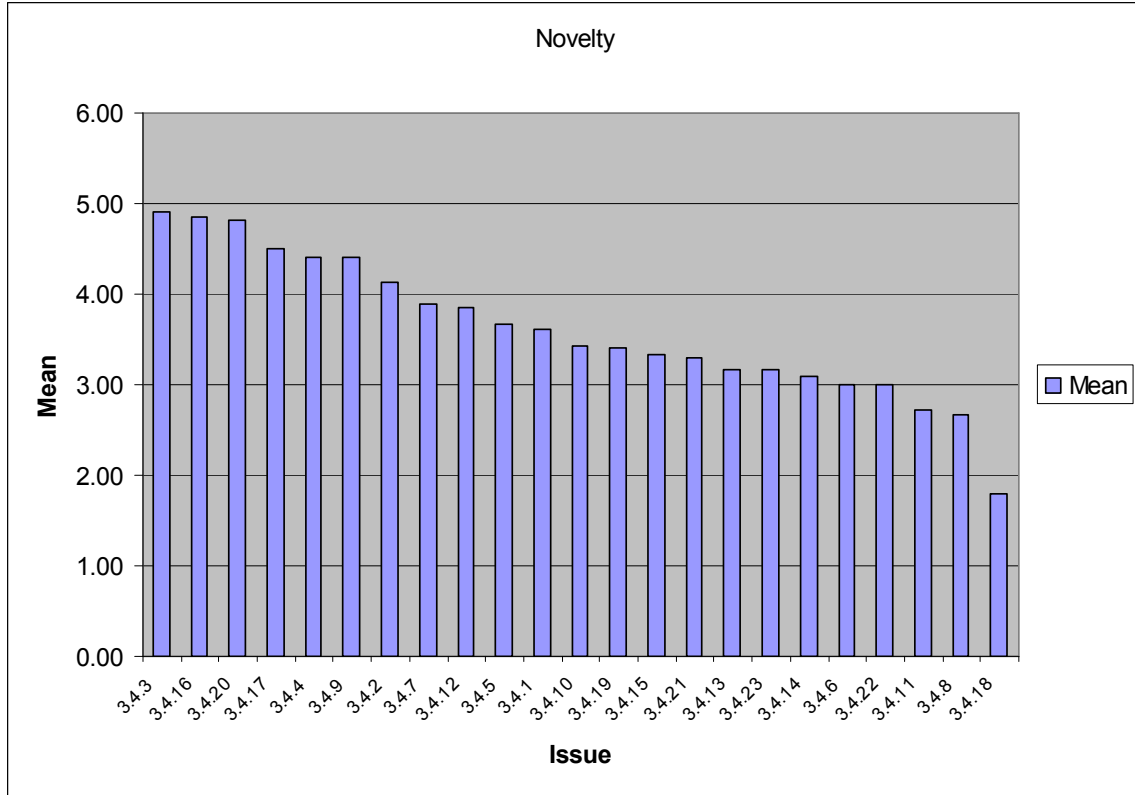


Figure 9 Sub-area 3.4 Novelty

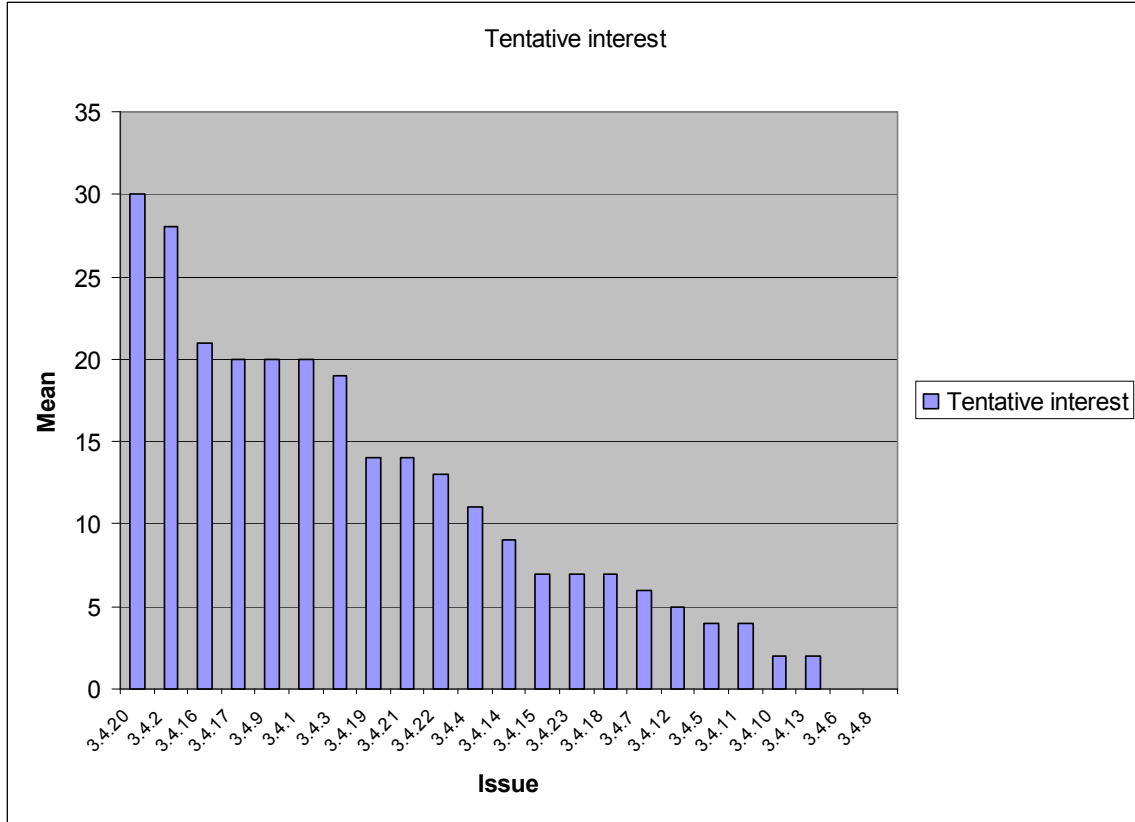


Figure 10 Sub-area 3.4 Tentative interest

Sub-area 3.5

Table 9 Sub-area 3.5 Statistics from Task 2

Issue	Novelty					Tentative interest					
	Mean	Std	min	max	Respondents	0	1	2	3	Respondents	Weighted sum
3.5.1	3.25	1.26	2	5	4	43	0	0	0	43	0
3.5.2	3.67	0.58	3	4	3	42	0	0	0	42	0
3.5.3	4.14	2.04	2	7	7	34	5	1	1	41	10
3.5.4	3.25	0.71	2	4	8	37	5	1	0	43	7
3.5.5	4.18	1.40	2	7	11	31	3	4	3	41	20
3.5.6	4.10	0.74	3	5	10	28	8	2	2	40	18
3.5.7	3.63	1.19	2	6	8	32	2	3	1	38	11
3.5.8	5.00	1.87	2	7	17	25	2	2	9	38	33
3.5.9	1.33	0.58	1	2	3	36	0	0	0	36	0
3.5.10	3.43	0.98	2	5	7	32	2	1	1	36	7
3.5.11	4.33	0.87	3	6	9	29	2	2	3	36	15
3.5.12	4.08	1.31	2	7	12	26	3	4	3	36	20
3.5.13	2.50	1.05	1	4	6	32	3	1	0	36	5
3.5.14	3.00	1.69	1	5	8	30	1	3	2	36	13
3.5.15	4.50	1.62	1	7	12	28	3	1	4	36	17
3.5.16	4.13	1.46	2	7	8	30	0	4	2	36	14
3.5.17	4.33	2.08	2	6	3	34	0	1	0	35	2
3.5.18	3.78	1.09	2	5	9	26	2	5	2	35	18
3.5.19	3.77	1.01	2	5	13	24	5	4	3	36	22
3.5.20	3.40	1.07	2	5	10	25	4	3	3	35	19
3.5.21	2.89	1.27	1	4	9	29	5	0	1	35	8
3.5.22	4.17	1.47	2	7	12	23	3	6	2	34	21
3.5.23	4.14	1.07	2	5	7	28	5	0	1	34	8
3.5.24	4.50	1.78	1	7	10	25	3	3	3	34	18
3.5.25	4.63	1.30	2	6	8	28	3	1	2	34	11
3.5.26	4.92	1.51	1	7	12	26	2	4	4	36	22
3.5.27	3.57	1.13	2	5	7	29	1	3	1	34	10
3.5.28	1.67	0.58	1	2	3	34	0	0	0	34	0
3.5.29	1.70	1.49	1	5	10	32	1	1	1	35	6
3.5.30	3.71	2.06	1	6	7	31	0	3	0	34	6

* Weighted sum: Sum of the respondents weighted with the specific criteria (0,1,2,3)

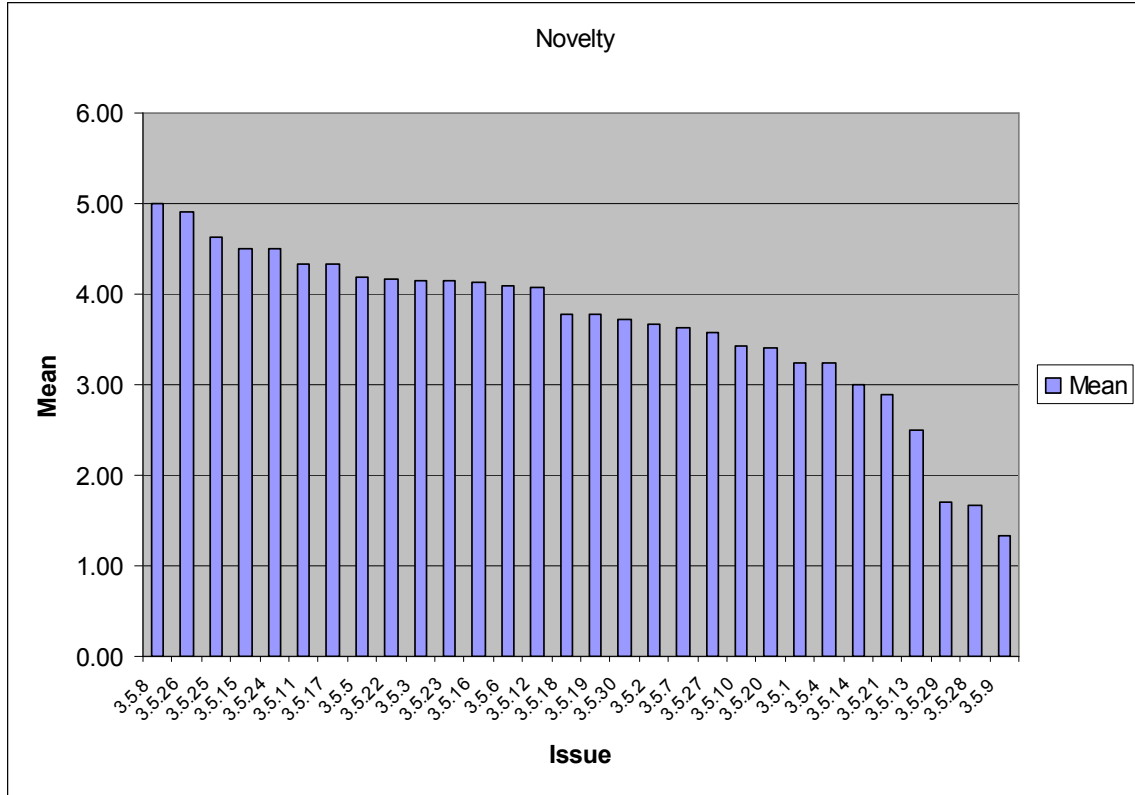


Figure 11 Sub-area 3.5 Novelty

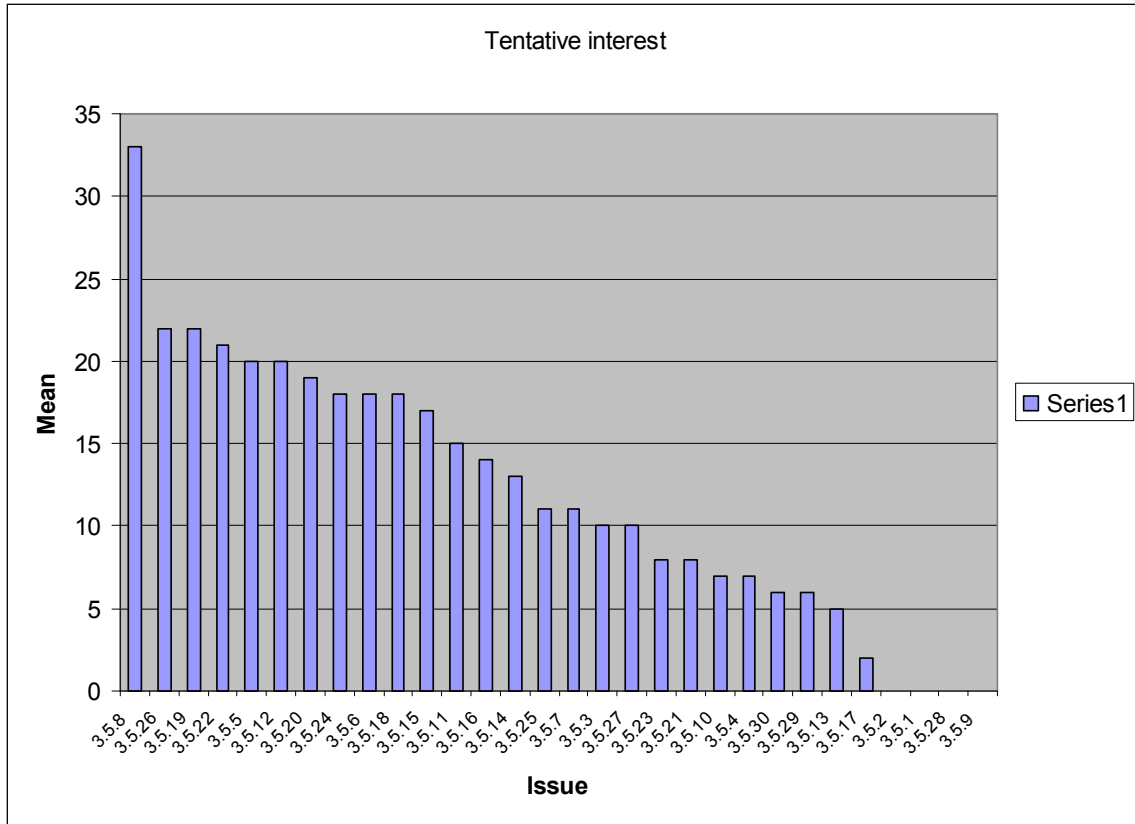


Figure 12 Sub-area 3.5 Tentative interest

Sub-area 3.N

Table 7 Sub-area 3.N Statistics from Task 2

Issue	Novelty					Tentative interest					
	Mean	Std	min	max	Respondents	0	1	2	3	Respondents	Weighted sum
3.N.1	3.80	2.28	1	7	5	19	0	1	1	21	5
3.N.2	2.83	1.17	1	4	6	20	0	0	0	20	0
3.N.3	3.67	1.53	2	5	3	18	0	0	1	19	3
3.N.4	3.50	2.12	2	5	2	19	0	0	0	19	0
3.N.5	3.25	2.63	1	6	4	17	0	0	2	19	6

* Weighted sum: Sum of the respondents weighted with the specific criteria (0,1,2,3)

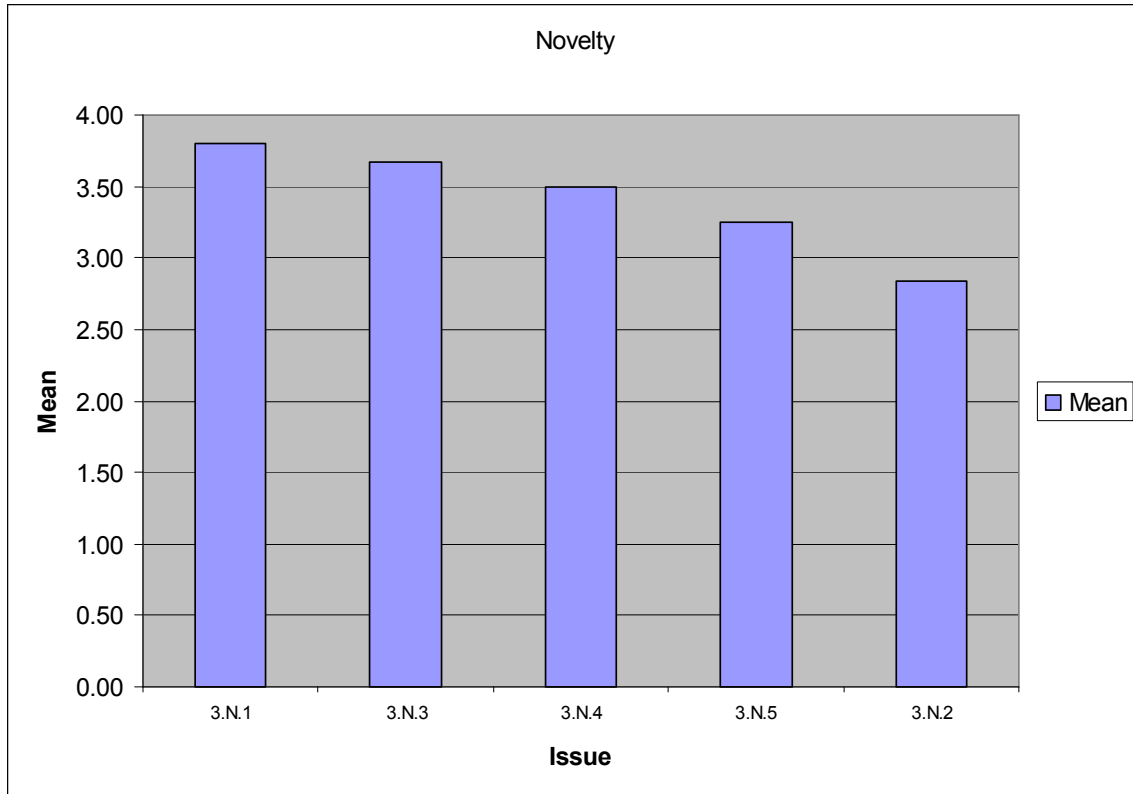


Figure 13 Sub-area 3.N Novelty

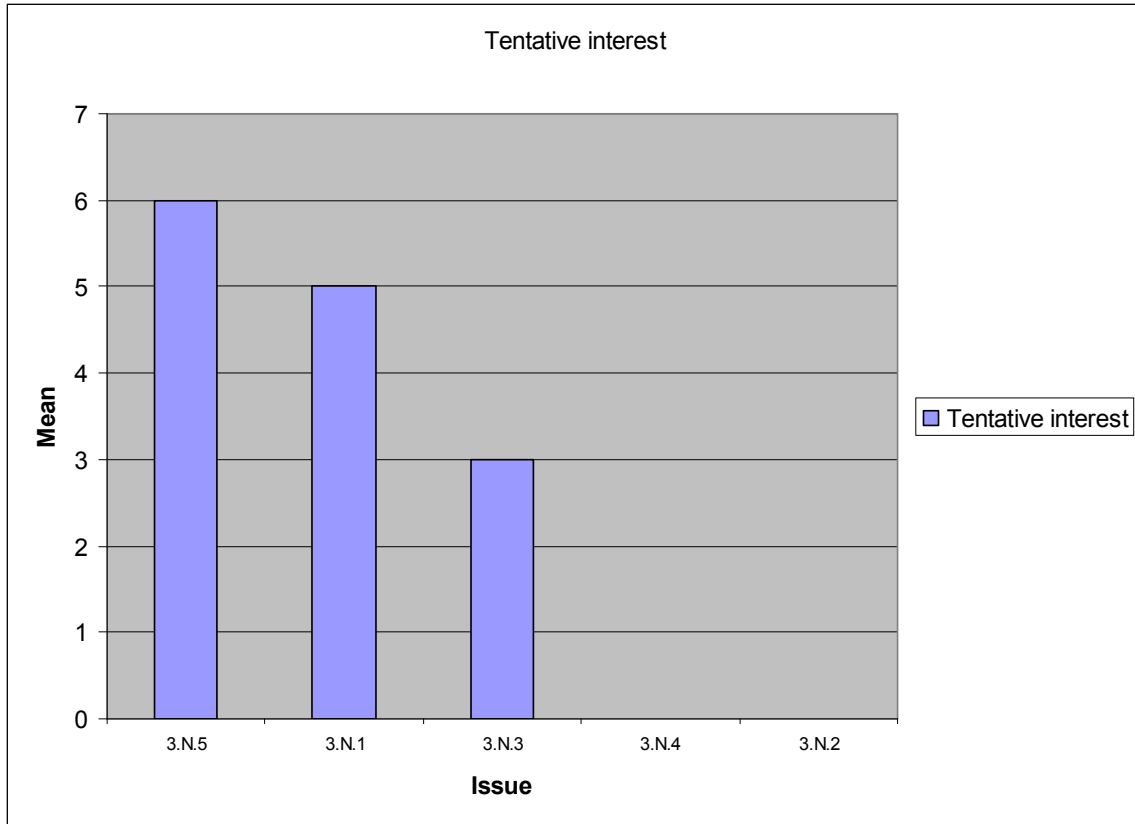


Figure 14 Sub-area 3.N Tentative interest

Sub-area 4.1

Table 8 Sub-area 4.1 Statistics from Task 2

Issue	Novelty					Tentative interest					
	Mean	Std	min	max	Respondents	0	1	2	3	Respondents	Weighted sum
4.1.1	2.75	1.71	1	5	4	21	0	1	0	22	2
4.1.2	4.00	1.00	3	5	3	19	1	0	0	20	1
4.1.3	3.75	1.50	2	5	4	18	2	1	0	21	4
4.1.4	4.56	1.33	2	7	9	16	0	2	2	20	10
4.1.5	4.33	2.06	1	7	9	17	1	1	1	20	6
4.1.6	5.33	1.58	3	7	9	14	1	2	3	20	14
4.1.7	3.71	2.06	1	7	7	18	0	1	1	20	5
4.1.8	3.75	1.26	2	5	4	16	2	0	0	18	2
4.1.9	4.80	1.79	3	7	5	16	0	1	1	18	5
4.1.10	2.50	1.73	1	4	4	17	0	0	1	18	3

* Weighted sum: Sum of the respondents weighted with the specific criteria (0,1,2,3)

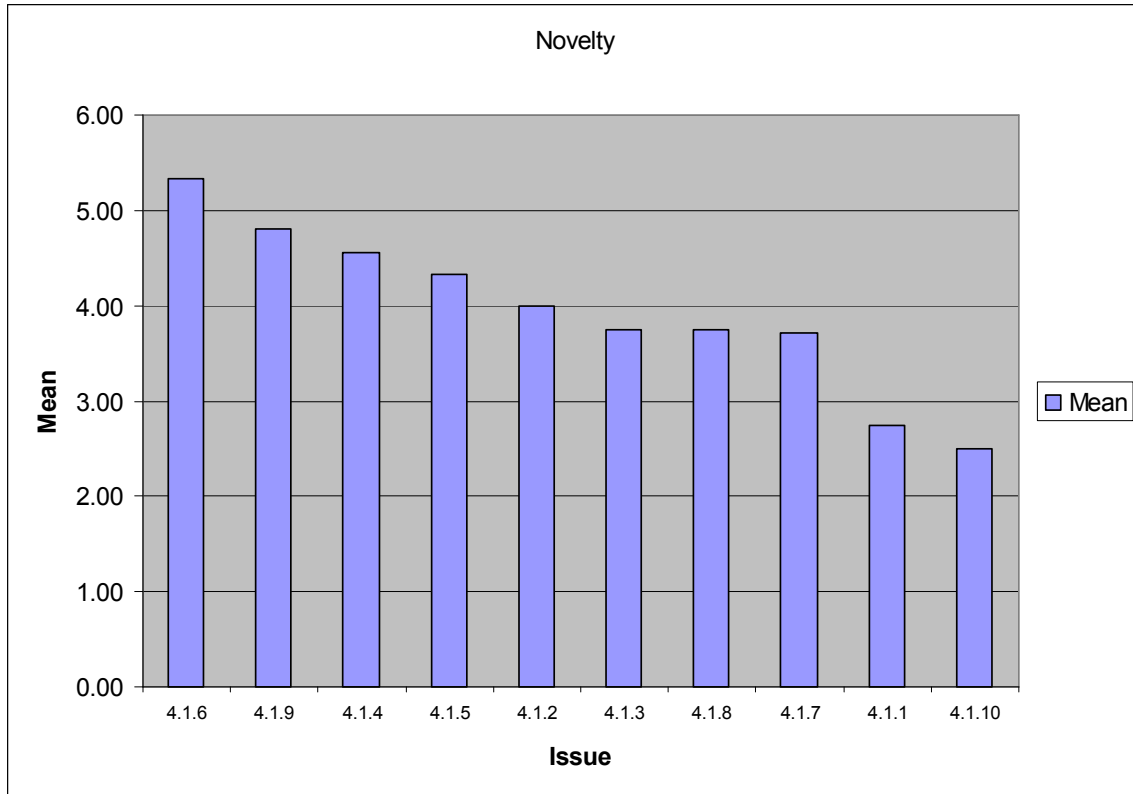


Figure 35 Sub-area 4.1 Novelty

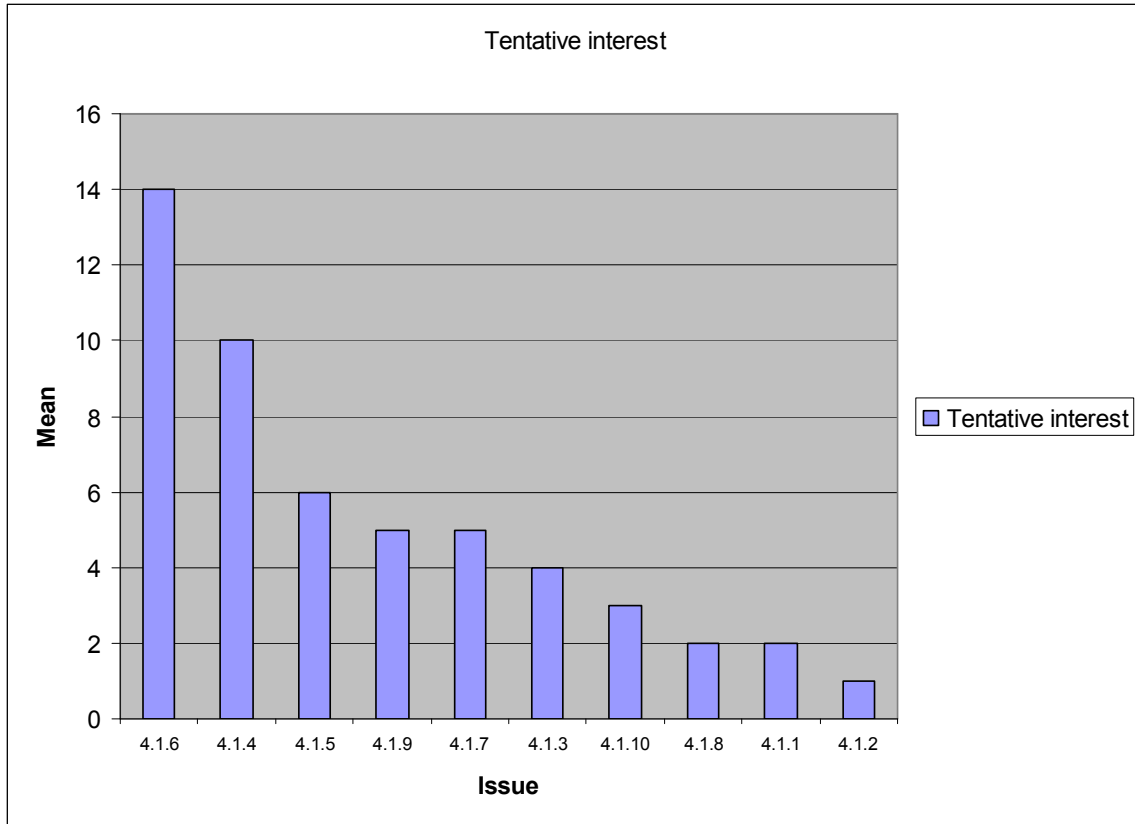


Figure 16 Sub-area 4.1 Tentative interest

Sub-area 4.2

Table 9 Sub-area 4.2 Statistics from Task 2

Issue	Novelty					Tentative interest					
	Mean	Std	min	max	Respondents	0	1	2	3	Respondents	Weighted sum
4.2.1	4.00	1.94	1	7	10	16	2	2	1	21	9
4.2.2	4.33	2.52	2	7	3	18	0	0	1	19	3
4.2.3	4.29	1.98	1	7	7	15	1	2	1	19	8
4.2.4	3.67	2.08	2	6	3	18	0	0	1	19	3
4.2.5	3.00	0.00	3	3	2	19	0	0	0	19	0
4.2.6	3.40	2.07	1	6	5	18	0	0	1	19	3
4.2.7	4.25	2.12	1	7	8	12	5	0	2	19	11
4.2.8	4.40	1.14	3	6	5	15	2	0	1	18	5
4.2.9	3.80	1.64	1	5	5	15	0	2	0	17	4

* Weighted sum: Sum of the respondents weighted with the specific criteria (0,1,2,3)

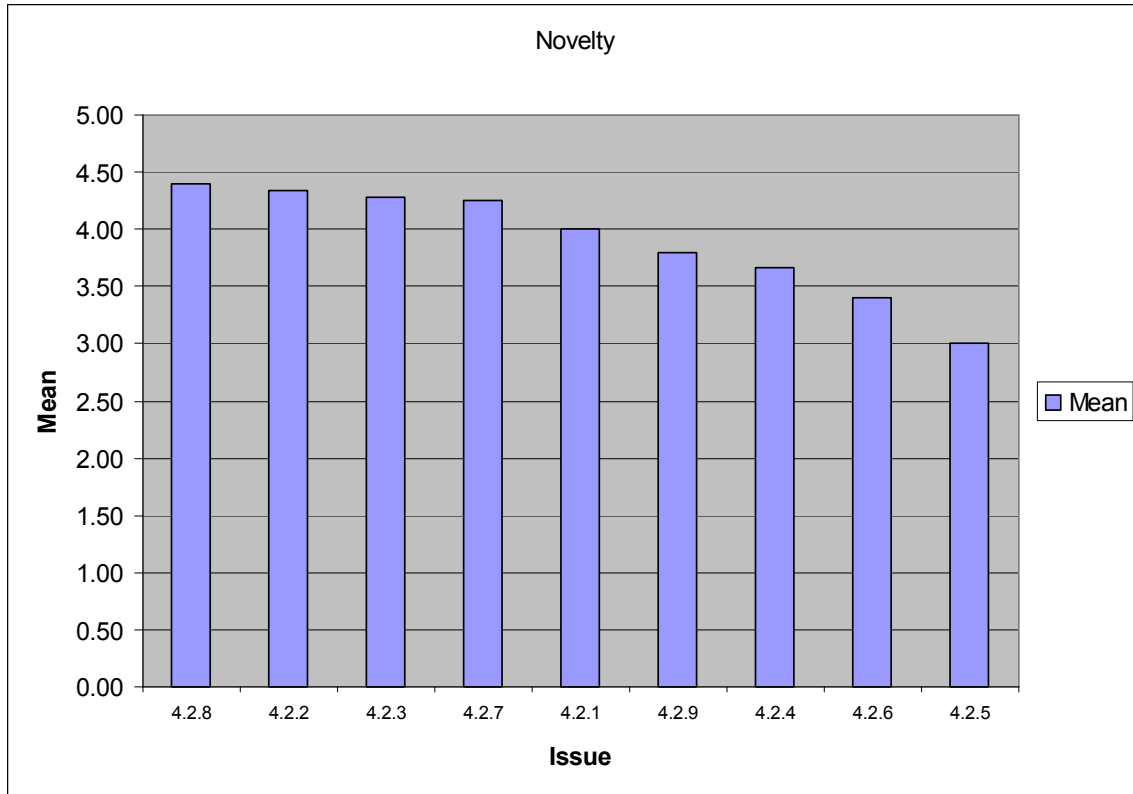


Figure 17 Sub-area 4.2 Novelty

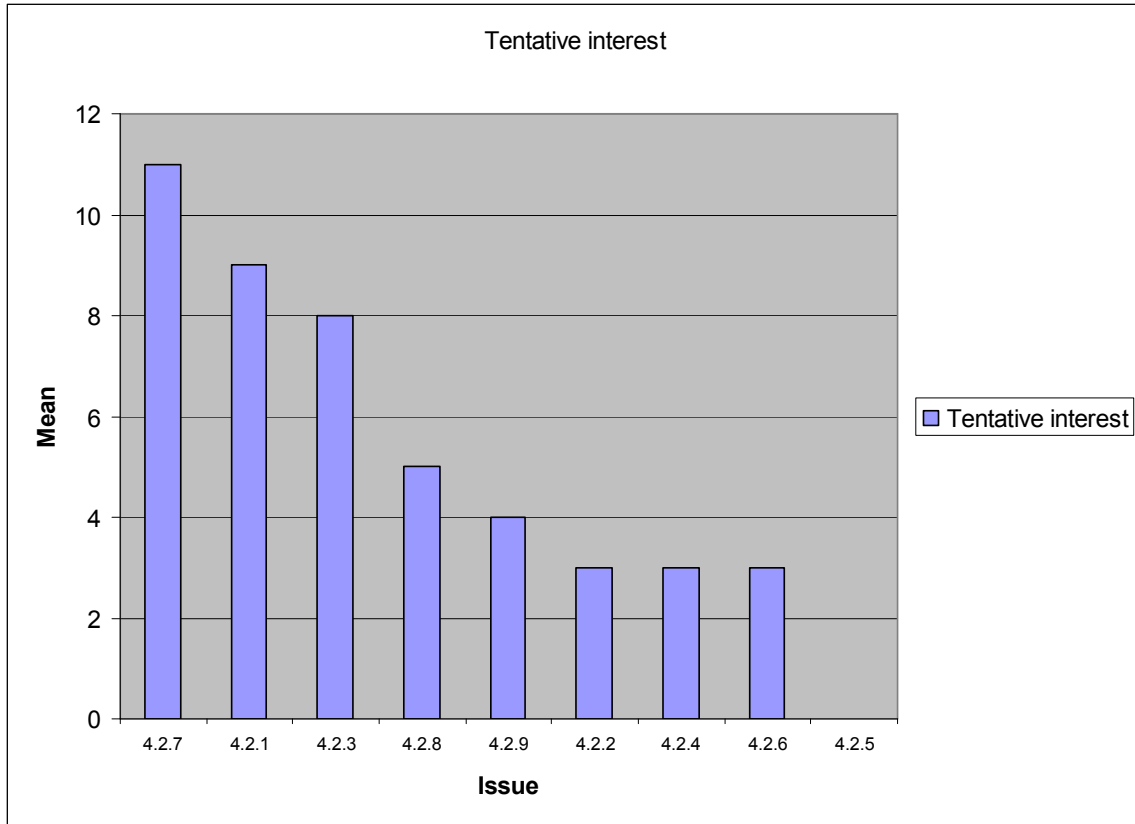


Figure 18 Sub-area 4.2 Tentative interest

Sub-area 4.N

Table 10 Sub-area 4.N Statistics from Task 2

Issue	Novelty					Tentative interest					
	Mean	Std	min	max	Respondents	0	1	2	3	Respondents	Weighted sum
4.N.1	4.75	0.50	4	5	4	15	0	2	0	17	4
4.N.2	4.50	1.52	3	7	6	12	1	1	2	16	9
4.N.3	4.17	2.04	1	7	6	12	0	1	3	16	11

* Weighted sum: Sum of the respondents weighted with the specific criteria (0,1,2,3)

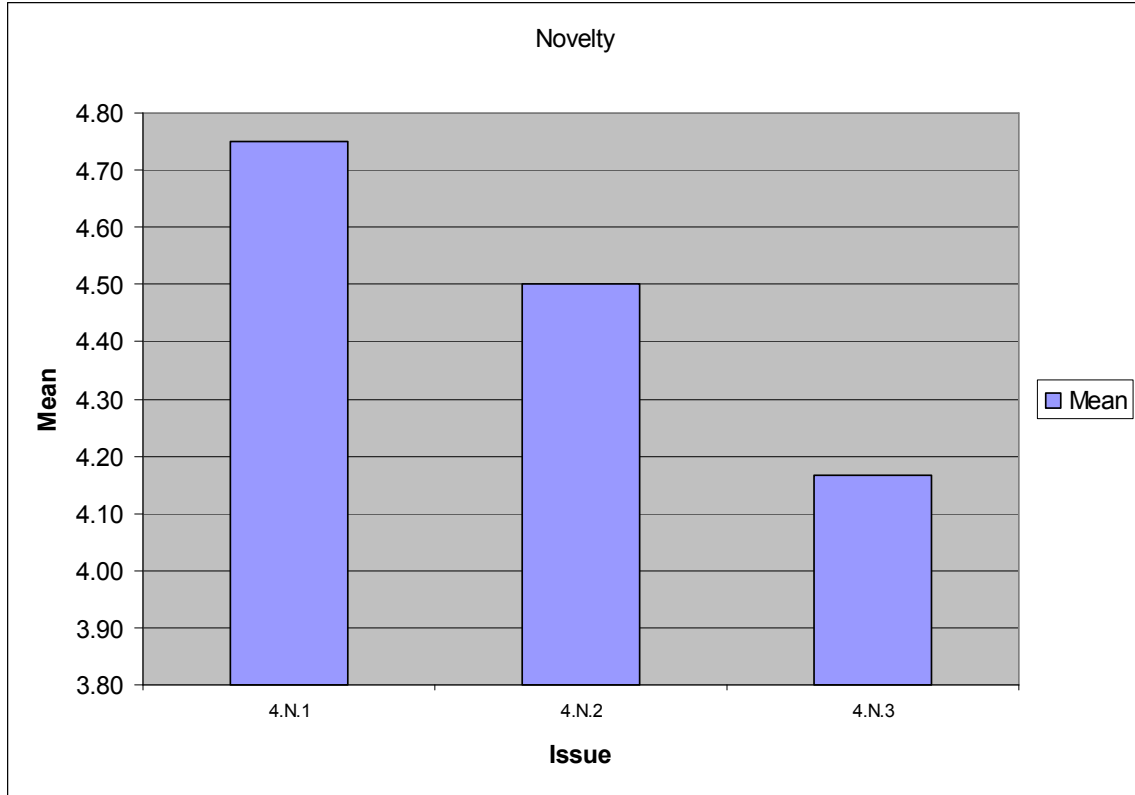


Figure 19 Sub-area 4.N Novelty

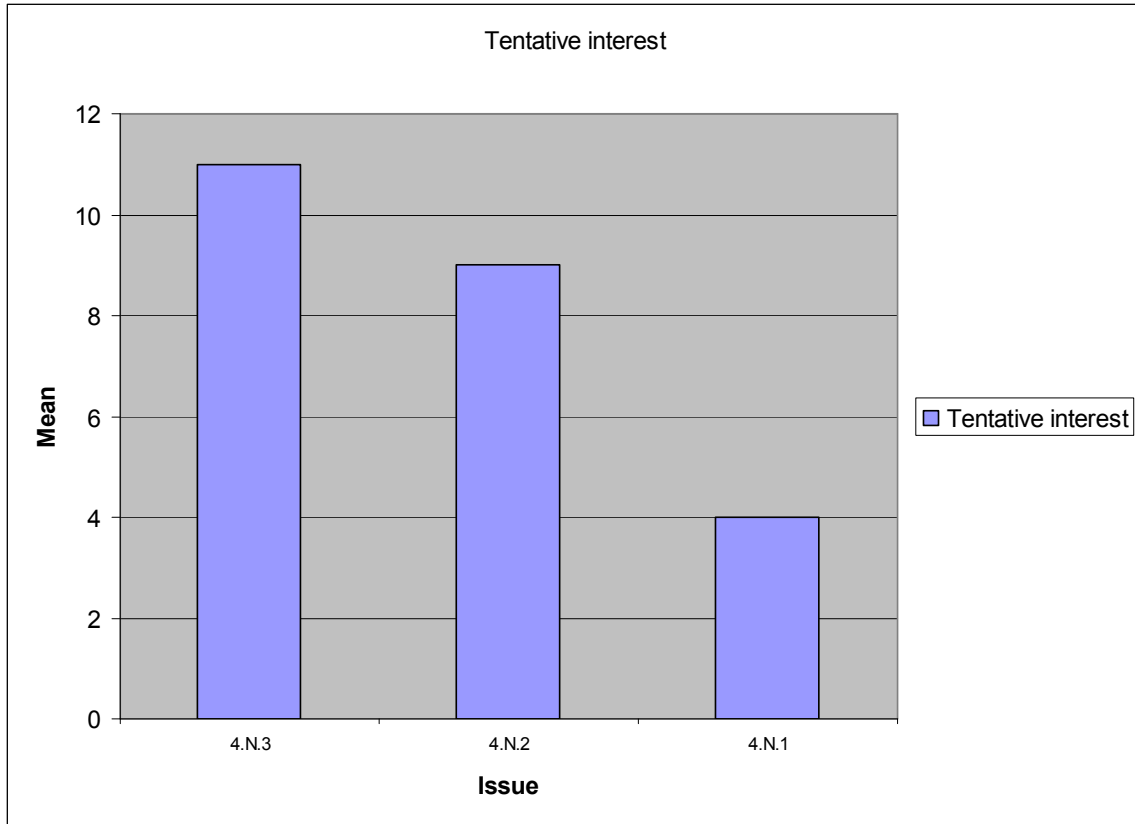


Figure 20 Sub-area 4.N Tentative interest