



Collaborative shaping of Research Agendas in WoodWisdom-net

Workshop for researchers and industrial leaders

Sustainable forestry

Wednesday February 15, 2006 Helsinki

Analysis

Contents

Sub-area 1.3	3
Sub-area 3.1	5
Sub-area 3.2	7
Sub-area 3.3	9
Sub-area 3.4	11
Sub-area 3.5	13
Sub-area 3.N	15
Sub-area 4.1	16
Sub-area 4.2	18
Sub-area 4.N	20

Sub-area 1.3

Table 3 Sub-area 1.3 Scores

Issue	Novelty*	Industrial relevance*	Suitability for WW-Net*	Tentative interest**	Core***
1.3.1	3.67	2.50	3.50	24	0.00
1.3.2	3.92	4.00	4.50	16	0.00
1.3.3	3.84	3.50	4.00	19	0.00
1.3.4	3.64	6.00	6.00	20	0.42
1.3.5	4.00	5.00	4.00	18	0.33
1.3.6	5.00	6.50	6.00	23	0.67
1.3.7	4.11	5.00	6.50	30	0.67
1.3.8	3.92	4.67	4.33	17	0.33
1.3.9	4.14	4.00	4.67	19	0.00
1.3.10	4.13	4.00	3.67	17	0.00
1.3.11	5.05	5.33	5.33	33	0.42
1.3.12	4.50	4.00	5.00	17	0.00
1.3.13	3.64	4.00	4.67	18	0.00
1.3.14	3.60	2.00	2.00	9	0.00
1.3.15	3.22	-	-	12	-
1.3.16	4.45	-	-	17	-
1.3.17	4.17	3.50	4.00	18	0.00
1.3.18	4.11	4.67	5.33	33	0.08
1.3.19	4.39	-	-	25	
1.3.20	4.19	4.00	4.00	24	0.00
1.3.21	3.00	5.00	6.00	11	0.00
1.3.22	4.80	5.00	5.00	18	0.08
1.3.23	4.29	-	-	19	-
1.3.24	3.85	3.00	6.00	14	0.00
1.3.25	4.20	5.00	5.00	21	0.00
1.3.26	3.70	6.00	6.00	13	0.83
1.3.27	3.00	4.00	6.00	10	0.00
1.3.28	3.79	4.00	4.00	17	0.00
1.3.29	4.60	5.67	6.00	28	1.00
1.3.30	4.22	-	-	11	-
1.3.31	4.25	3.67	5.50	16	0.00
1.3.32	3.55	5.50	6.00	10	0.08
1.3.33	3.71	6.00	7.00	21	1.00
1.3.34	3.67	4.67	5.00	21	0.00
1.3.35	4.50	4.67	5.00	17	0.00
1.3.36	4.20	6.00	6.00	2	1.00
1.3.37	2.64	6.00	6.50	10	0.08

* Mean of evaluations

** Weighted sum: Sum of the respondents weighted with the specific criteria (0,1,2,3)

*** Core index, search for portfolios size 7, see www.rpm.tkk.fi

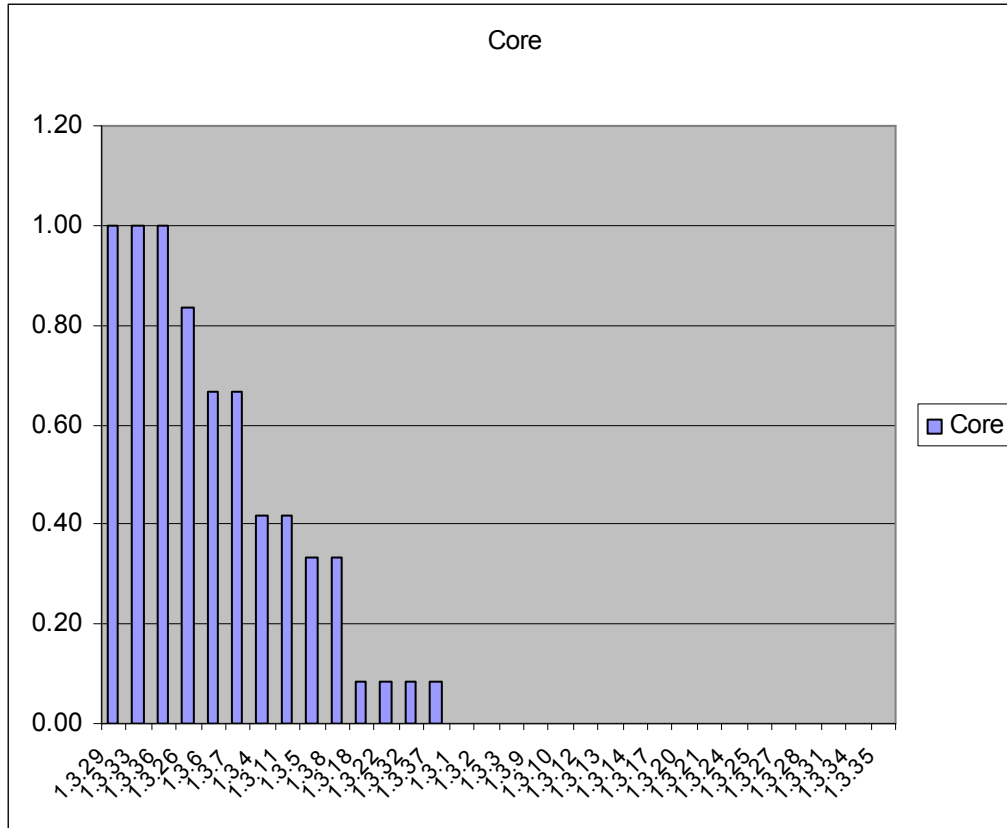


Figure 3 Sub-area 1.3 Core indices

Sub-area 3.1

Table 2 Sub-area 3.1 Scores

Issue	Novelty*	Industrial relevance*	Suitability for WW-Net*	Tentative interest**	Core***
3.1.1	3.23	3.00	6.00	25	0.00
3.1.2	3.78	3.00	5.00	25	0.00
3.1.3	3.83	2.00	5.00	24	0.00
3.1.4	3.13	4.00	7.00	21	1.00
3.1.5	3.00	4.00	6.00	16	0.38
3.1.6	3.00	-	-	8	-
3.1.7	3.13	3.00	7.00	5	0.25
3.1.8	3.76	2.00	3.00	25	0.00
3.1.9	3.58	3.00	7.00	15	0.63
3.1.10	4.31	5.00	5.50	20	0.88
3.1.11	3.67	3.00	7.00	15	0.88
3.1.12	4.29	5.00	7.00	28	1.00
3.1.13	4.29	-	-	28	-
3.1.14	3.36	-	-	22	-
3.1.15	2.00	5.00	7.00	7	0.63
3.1.16	3.87	3.00	4.00	14	0.00
3.1.17	1.88	2.00	3.00	7	0.00
3.1.18	3.38	-	-	17	-
3.1.19	3.58	4.00	4.00	17	0.00
3.1.20	3.64	3.00	-	20	-
3.1.21	2.40	3.00	-	7	-
3.1.22	3.62	-	-	12	-
3.1.23	3.50	3.00	-	8	-
3.1.24	4.38	5.00	7.00	11	1.00
3.1.25	3.67	4.00	4.00	17	0.00
3.1.26	4.53	-	-	35	-
3.1.27	3.00	-	-	3	-
3.1.28	4.24	4.00	3.00	31	0.00
3.1.29	3.62	3.00	-	18	-
3.1.30	3.23	4.00	5.00	6	0.00
3.1.31	2.80	3.00	3.00	11	0.00
3.1.32	4.81	-	-	30	-
3.1.33	3.50	-	-	12	-
3.1.34	3.73	4.00	5.50	16	0.38

* Mean of evaluations

** Weighted sum: Sum of the respondents weighted with the specific criteria (0,1,2,3)

*** Core index, search for portfolios size 7, see www.rpm.tkk.fi

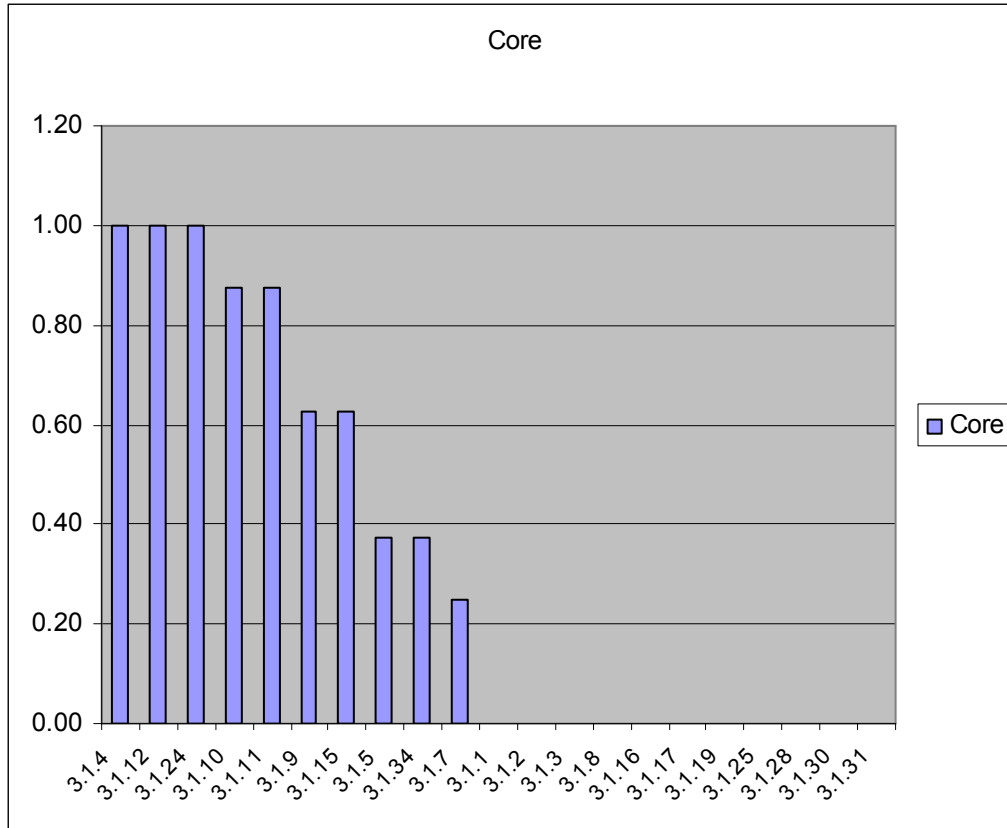


Figure 2 Sub-area 3.1 Core indices

Sub-area 3.2

Table 3 Sub-area 3.2 Scores

Issue	Novelty*	Industrial relevance*	Suitability for WW-Net*	Tentative interest**	Core***
3.2.1	3.00	3.67	6.00	11	1.00
3.2.2	3.82	-	-	10	-
3.2.3	3.20	-	-	4	-
3.2.4	3.10	-	-	9	-
3.2.5	3.11	3.00	3.00	10	0.00
3.2.6	3.20	5.00	7.00	8	1.00
3.2.7	3.17	-	-	13	-
3.2.8	3.10	3.00	5.00	2	0.00
3.2.9	4.08	-	-	11	-
3.2.10	3.38	3.00	1.00	16	0.00
3.2.11	2.56	3.00	3.00	2	0.00
3.2.12	4.15	3.00	7.00	11	1.00
3.2.13	2.44	1.00	-	5	-
3.2.14	3.92	3.00	7.00	10	1.00
3.2.15	3.30	3.00	-	6	-
3.2.16	2.67	3.00	5.00	7	0.00
3.2.17	3.10	2.00	5.00	10	0.00
3.2.18	2.78	4.00	7.00	4	1.00
3.2.19	5.08	4.00	5.00	17	1.00
3.2.20	4.42	-	-	14	-
3.2.21	4.18	-	-	10	-
3.2.22	4.44	5.00	7.00	13	1.00
3.2.23	3.82	-	-	11	-

* Mean of evaluations

** Weighted sum: Sum of the respondents weighted with the specific criteria (0,1,2,3)

*** Core index, search for portfolios size 7, see www.rpm.tkk.fi

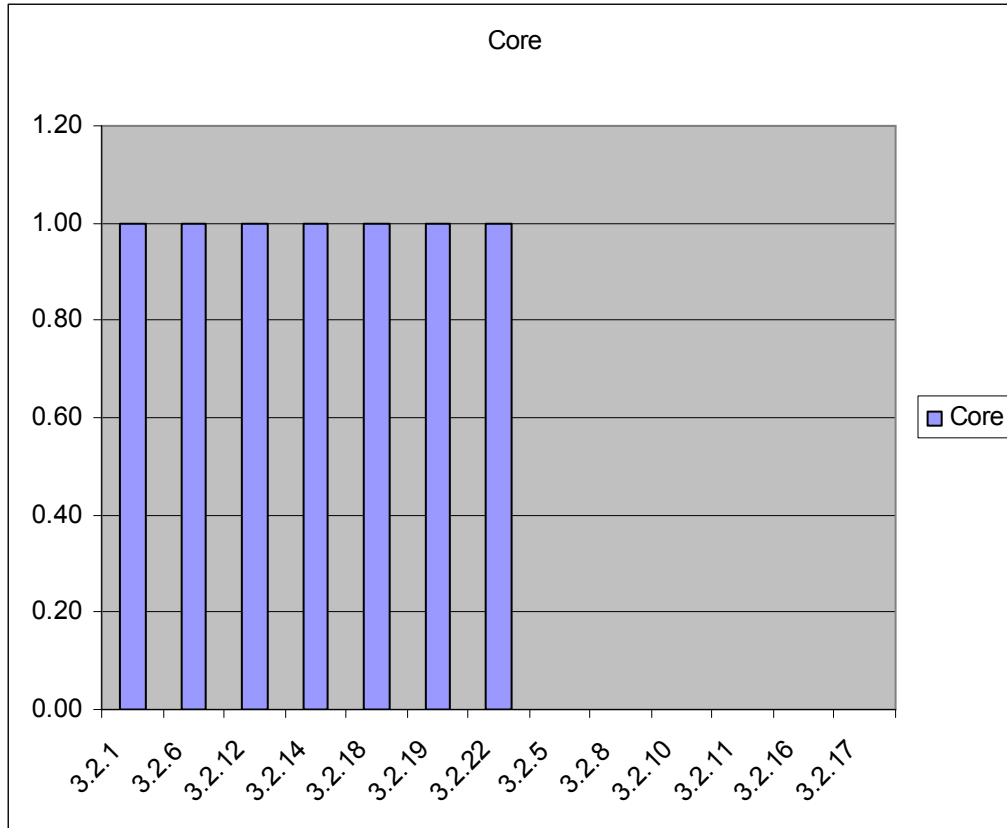


Figure 3 Sub-area 3.2 Core indices

Sub-area 3.3

Table 4 Sub-area 3.3 Statistics from Task 2

Issue	Novelty*	Industrial relevance*	Suitability for WW-Net*	Tentative interest**	Core***
3.3.1	3.36	4.00	6.50	13	1.00
3.3.2	4.71	3.00	5.00	28	1.00
3.3.3	3.45	-	-	6	-
3.3.4	4.11	4.50	4.00	12	0.50
3.3.5	3.00	-	-	7	-
3.3.6	3.53	4.00	5.00	21	1.00
3.3.7	4.50	3.00	4.00	30	0.50
3.3.8	4.11	-	-	31	-
3.3.9	3.22	-	-	4	-
3.3.10	3.88	2.00	7.00	18	1.00
3.3.11	3.47	-	-	13	-
3.3.12	2.93	-	-	8	-
3.3.13	4.30	-	-	11	-
3.3.14	3.56	-	-	24	-
3.3.15	3.80	2.50	7.00	27	1.00
3.3.16	3.20	-	-	5	-
3.3.17	3.40	-	-	18	-
3.3.18	4.13	4.00	4.00	10	0.50
3.3.19	3.00	2.00	3.00	16	0.00
3.3.20	3.21	3.00	5.00	13	0.50
3.3.21	4.12	-	-	35	-
3.3.22	3.79	-	-	15	-

* Mean of evaluations

** Weighted sum: Sum of the respondents weighted with the specific criteria (0,1,2,3)

*** Core index, search for portfolios size 7, see www.rpm.tkk.fi

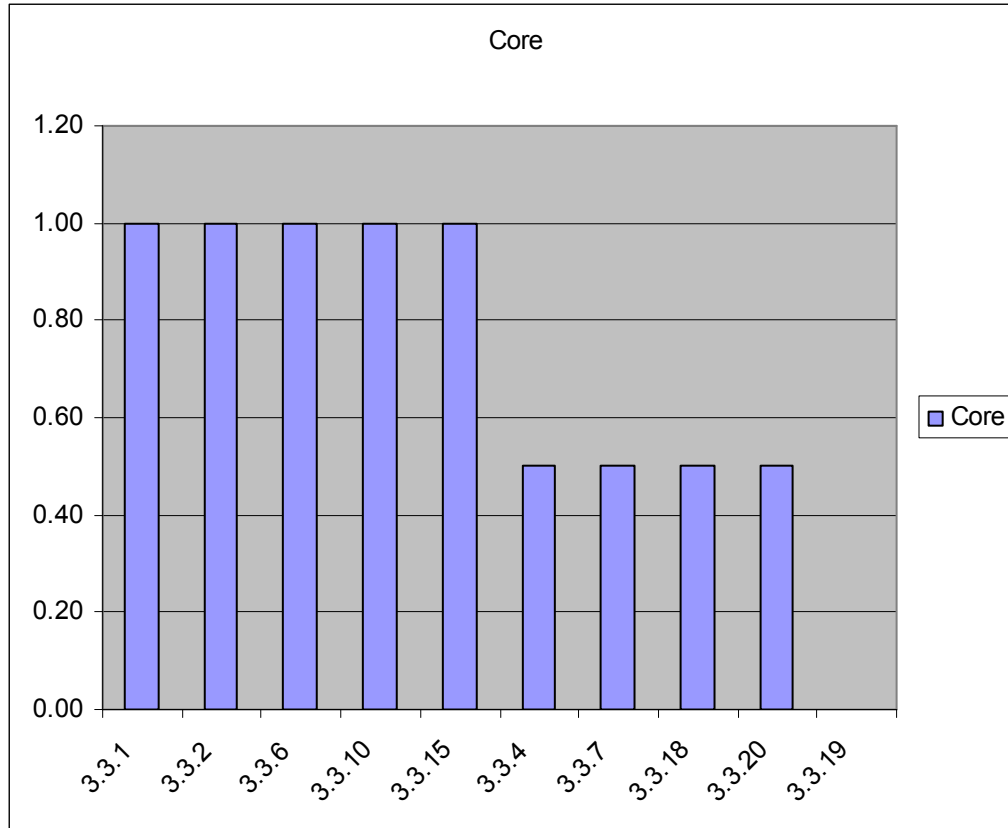


Figure 4 Sub-area 3.3 Core indices

Sub-area 3.4

Table 5 Sub-area 3.4 Scores

Issue	Novelty*	Industrial relevance*	Suitability for WW-Net*	Tentative interest**	Core***
3.4.1	3.62	5.00	6.00	20	0.33
3.4.2	4.13	3.00	3.00	28	0.00
3.4.3	4.91	-	-	19	-
3.4.4	4.40	4.50	4.00	11	0.00
3.4.5	3.67	4.00	7.00	4	0.67
3.4.6	3.00	-	-	0	-
3.4.7	3.89	6.00	6.00	6	0.67
3.4.8	2.67	4.67	5.00	0	0.00
3.4.9	4.40	4.50	7.00	20	1.00
3.4.10	3.43	5.00	7.00	2	0.67
3.4.11	2.71	-	-	4	-
3.4.12	3.86	5.00	5.00	5	0.00
3.4.13	3.17	-	-	2	-
3.4.14	3.10	7.00	7.00	9	1.00
3.4.15	3.33	7.00	7.00	7	1.00
3.4.16	4.85	5.00	5.00	21	0.67
3.4.17	4.50	3.50	5.00	20	0.00
3.4.18	1.80	-	-	7	-
3.4.19	3.40	3.00	5.00	14	0.00
3.4.20	4.81	7.00	7.00	30	1.00
3.4.21	3.30	-	-	14	-
3.4.22	3.00	3.00	3.00	13	0.00
3.4.23	3.17	-	-	7	-

* Mean of evaluations

** Weighted sum: Sum of the respondents weighted with the specific criteria (0,1,2,3)

*** Core index, search for portfolios size 7, see www.rpm.tkk.fi

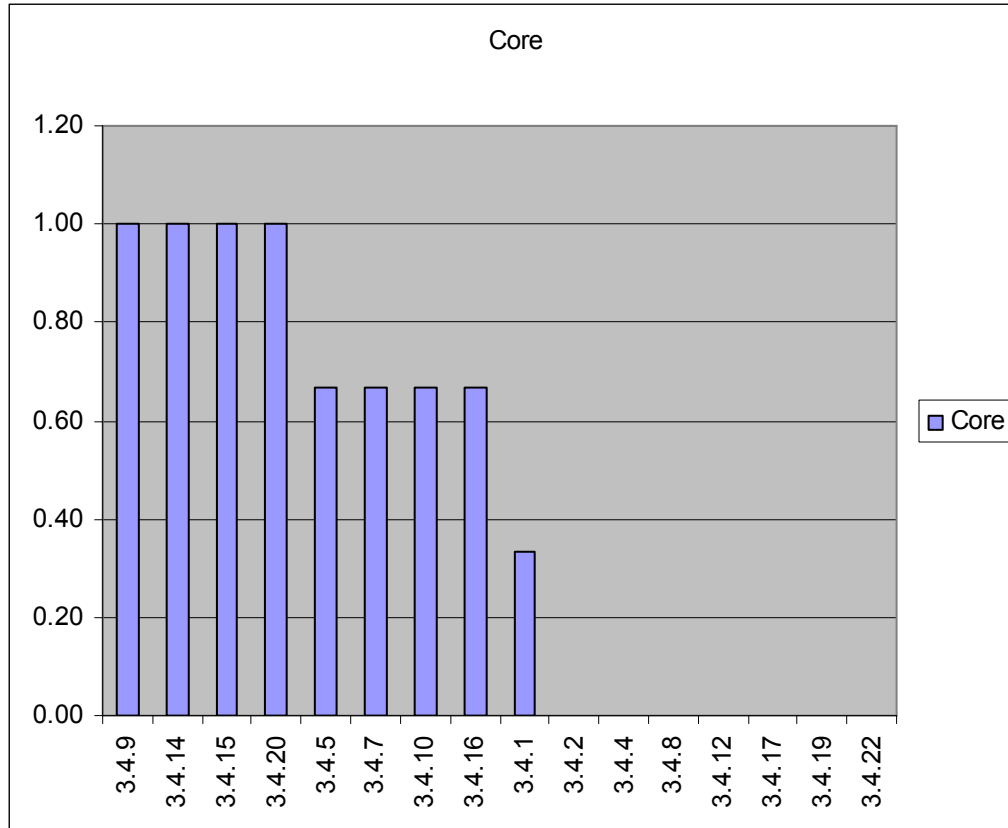


Figure 5 Sub-area 3.4 Core indices

Sub-area 3.5

Table 6 Sub-area 3.Scores

Issue	Novelty*	Industrial relevance*	Suitability for WW-Net*	Tentative interest**	Core***
3.5.1	3.25	2.67	3.00	0	0.00
3.5.2	3.67	3.50	3.50	0	0.00
3.5.3	4.14	3.00	7.00	10	1.00
3.5.4	3.25	4.00	5.00	7	0.00
3.5.5	4.18	5.00	6.00	20	1.00
3.5.6	4.10	2.50	3.00	18	0.00
3.5.7	3.63	3.33	4.33	11	0.00
3.5.8	5.00	5.00	7.00	33	1.00
3.5.9	1.33	-	-	0	-
3.5.10	3.43	4.33	5.00	7	0.00
3.5.11	4.33	4.00	3.00	15	0.00
3.5.12	4.08	4.00	5.50	20	0.63
3.5.13	2.50	5.00	3.00	5	0.00
3.5.14	3.00	3.00	5.00	13	0.00
3.5.15	4.50	3.50	4.50	17	0.00
3.5.16	4.13	3.67	4.00	14	0.00
3.5.17	4.33	-	-	2	-
3.5.18	3.78	5.00	5.50	18	1.00
3.5.19	3.77	3.00	3.00	22	0.00
3.5.20	3.40	1.50	-	19	-
3.5.21	2.89	2.00	-	8	-
3.5.22	4.17	4.50	5.00	21	0.63
3.5.23	4.14	4.00	5.00	8	0.13
3.5.24	4.50	5.00	4.00	18	0.38
3.5.25	4.63	3.50	2.50	11	0.00
3.5.26	4.92	5.00	4.50	22	0.75
3.5.27	3.57	4.00	3.00	10	0.00
3.5.28	1.67	2.50	5.00	0	0.00
3.5.29	1.70	3.67	4.00	6	0.00
3.5.30	3.71	5.00	5.00	6	0.50

* Mean of evaluations

** Weighted sum: Sum of the respondents weighted with the specific criteria (0,1,2,3)

*** Core index, search for portfolios size 7, see www.rpm.tkk.fi

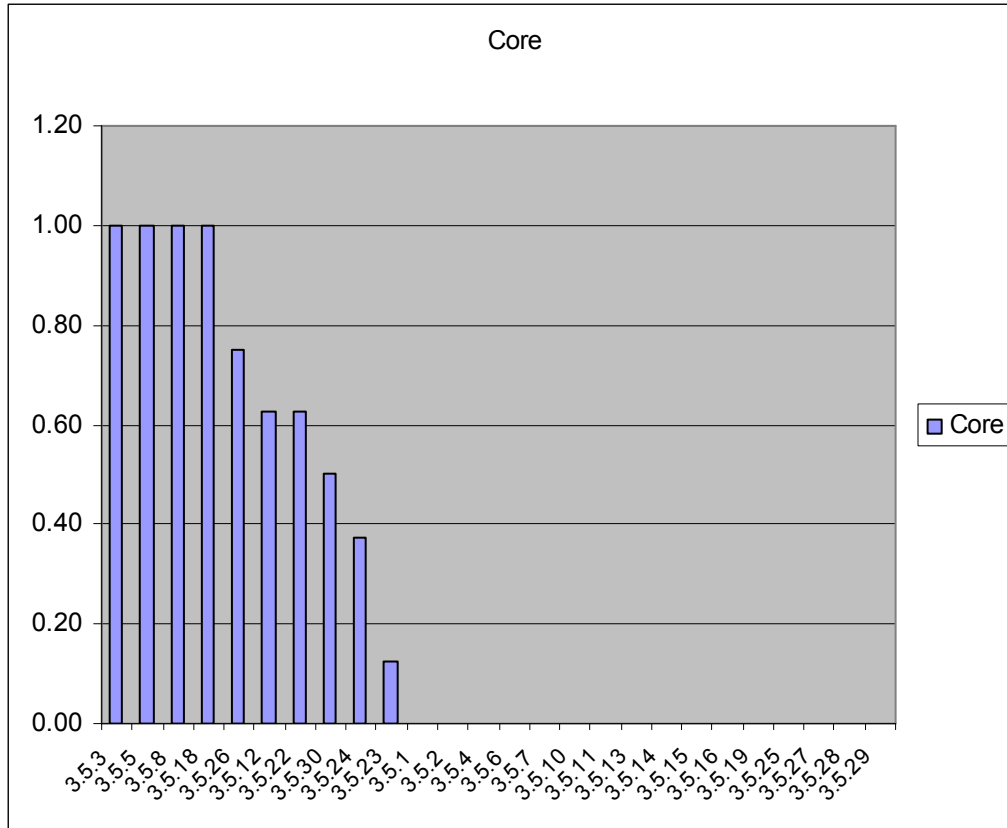


Figure 6 Core indices

Sub-area 3.N

Table 7 Sub-area 3.N Scores

Issue	Novelty*	Industrial relevance*	Suitability for WW-Net*	Tentative interest**
3.N.1	3.80	3.50	5.00	5
3.N.2	2.83	-	-	0
3.N.3	3.67	-	-	3
3.N.4	3.50	-	-	0
3.N.5	3.25	5.00	5.00	6

* Mean of evaluations

** Weighted sum: Sum of the respondents weighted with the specific criteria (0,1,2,3)

Sub-area 4.1

Table 8 Sub-area 4.1 Scores

Issue	Novelty*	Industrial relevance*	Suitability for WW-Net*	Tentative interest**	Core***
4.1.1	2.75	4.50	4.50	2	0.00
4.1.2	4.00	6.00	7.00	1	1.00
4.1.3	3.75	4.00	3.00	4	0.00
4.1.4	4.56	4.33	5.00	10	0.50
4.1.5	4.33	4.00	3.67	6	1.00
4.1.6	5.33	3.00	7.00	14	1.00
4.1.7	3.71	3.00	7.00	5	0.50
4.1.8	3.75	1.00	-	2	-
4.1.9	4.80	2.00	-	5	-
4.1.10	2.50	3.00	3.00	3	0.00

* Mean of evaluations

** Weighted sum: Sum of the respondents weighted with the specific criteria (0,1,2,3)

*** Core index, search for portfolios size 4, see www.rpm.tkk.fi

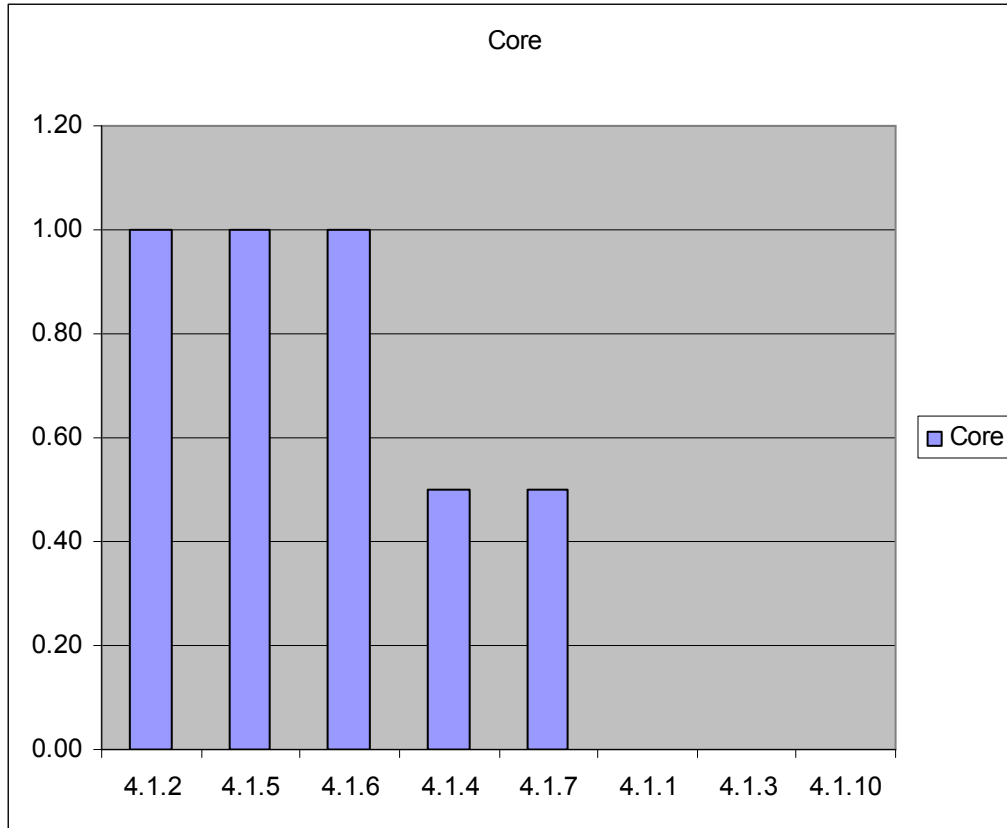


Figure 7 Sub-area 4.1 Core indices

Sub-area 4.2

Table 9 Sub-area 4.2 Scores

Issue	Novelty*	Industrial relevance*	Suitability for WW-Net*	Tentative interest**	Core***
4.2.1	4.00	4.25	4.50	9	1.00
4.2.2	4.33	3.00	4.00	3	0.00
4.2.3	4.29	4.00	5.33	8	1.00
4.2.4	3.67	2.00	3.00	3	0.00
4.2.5	3.00	2.50	4.00	0	0.00
4.2.6	3.40	2.00	3.00	3	0.00
4.2.7	4.25	5.75	6.50	11	1.00
4.2.8	4.40	2.67	4.00	5	0.00
4.2.9	3.80	5.33	5.33	4	1.00

* Mean of evaluations

** Weighted sum: Sum of the respondents weighted with the specific criteria (0,1,2,3)

*** Core index, search for portfolios size 4, see www.rpm.tkk.fi

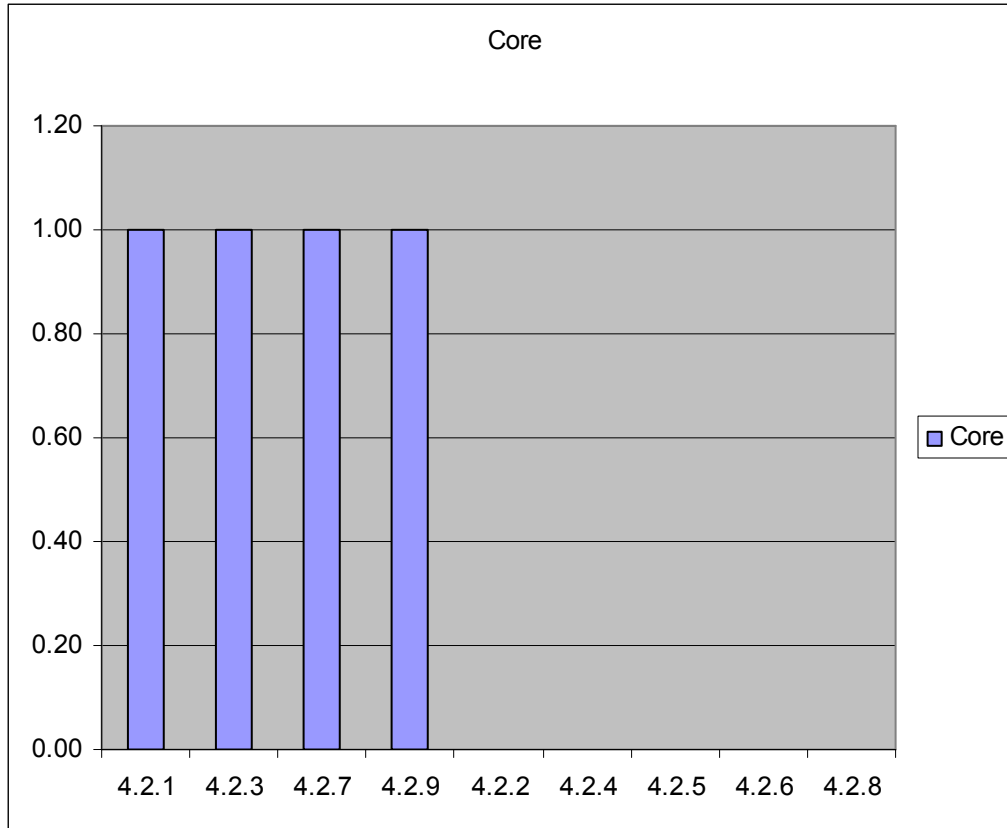


Figure 8 Sub-area 4.2 Core indices

Sub-area 4.N

Table 10 Sub-area 4.N Scores

Issue	Novelty*	Industrial relevance*	Suitability for WW-Net*	Tentative interest**
4.N.1	4.75	3.00	7.00	4
4.N.2	4.50	2.50	4.00	9
4.N.3	4.17	2.00	1.00	11

* Mean of evaluations

** Weighted sum: Sum of the respondents weighted with the specific criteria (0,1,2,3)