



Collaborative shaping of Research Agendas in WoodWisdom-net

Workshop for researchers and industrial leaders

New value-added products and production

Tuesday February 14, 2006 Helsinki

Results from Task 2

Contents

Sub-area 1.1	3
Sub-area 1.2	6
Sub-area 1.3	9
Sub-area 1.4	12
Sub-area 1.5	15
Sub-area 1.N	18
Sub-area 2.1	21
Sub-area 2.2	24
Sub-area 2.3	27
Sub-area 2.4	30
Sub-area 2.5	33
Sub-area 2.N	36
Sub-area 4.1	39
Sub-area 4.2	42
Sub-area 4.3	45

Sub-area 1.1

Table 1 Sub-area 1.1 Statistics from Task 2

Issue	Novelty					Tentative interest					
	Mean	Std	min	max	respodents	0	1	2	3	Respodents	Weighted sum
1.1.1	4.26	1.27	2	7	35	32	7	16	3	58	48
1.1.2	3.81	1.33	1	6	26	32	3	9	3	47	30
1.1.3	3.57	1.50	1	6	21	32	9	4	2	47	23
1.1.4	3.75	1.26	1	6	24	33	6	5	3	47	25
1.1.5	3.95	1.43	1	6	20	37	6	3	1	47	15
1.1.6	3.15	1.41	1	6	13	40	4	0	2	46	10
1.1.7	4.95	1.27	3	7	19	33	4	4	4	45	24
1.1.8	4.62	1.20	2	7	26	26	4	9	5	44	37
1.1.9	4.00	1.50	1	7	26	25	7	7	4	43	33
1.1.10	4.35	1.27	3	7	20	26	7	6	4	43	31
1.1.11	4.47	1.54	2	7	19	31	4	6	2	43	22

* Weighted sum: Sum of the respondents weighted with the specific criteria (0,1,2,3)

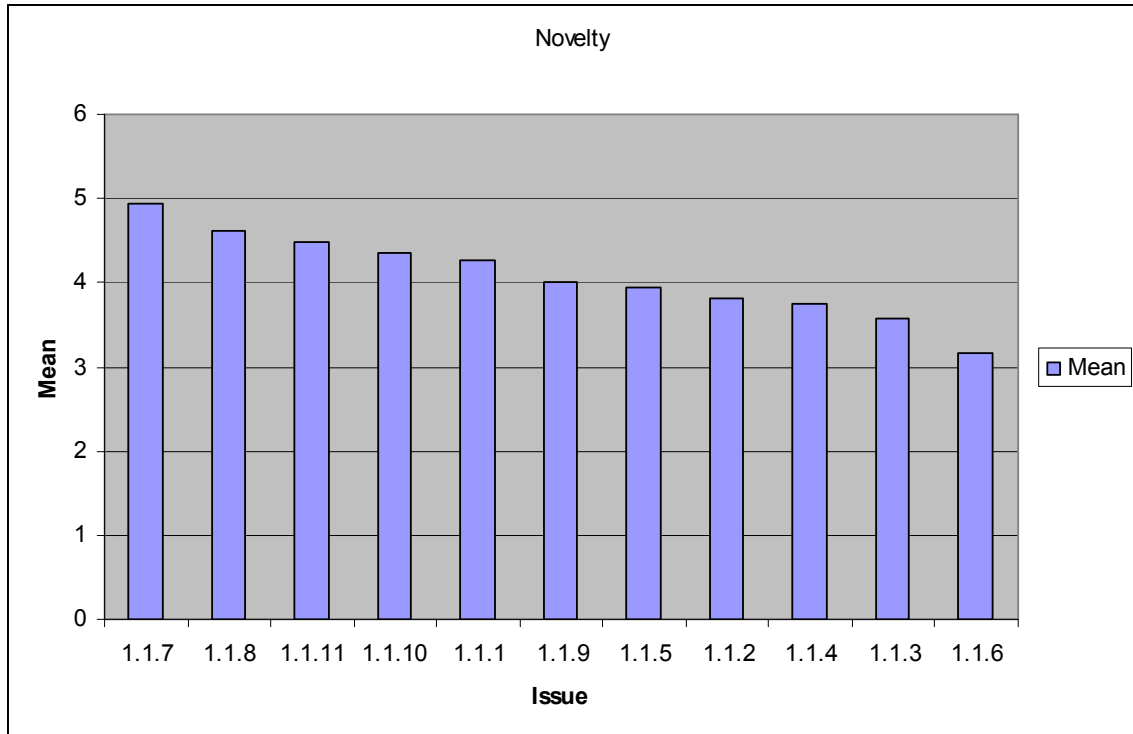


Figure 1 Sub-area 1.1 Novelty

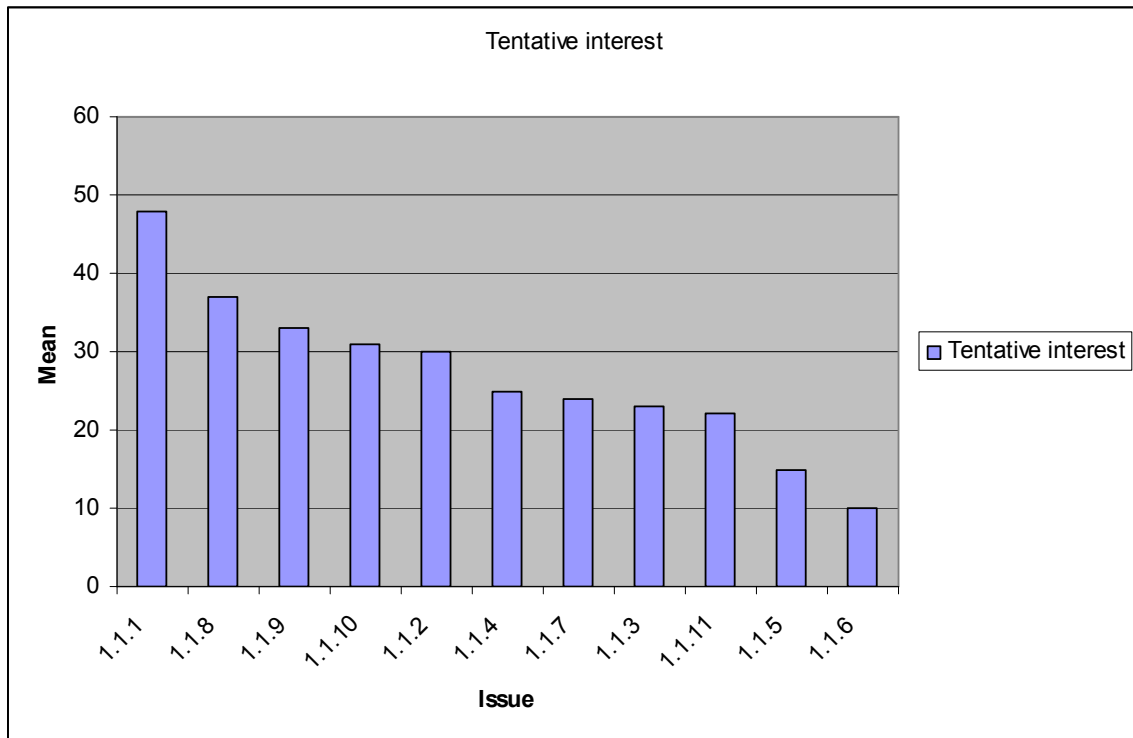


Figure 2 Sub-area 1.1 Tentative interest

Sub-area 1.2

Table 2 Sub-area 1.2 Statistics from Task 2

Issue	Novelty					Tentative interest					
	Mean	Std	min	max	respodents	0	1	2	3	Respodents	Weighted sum
1.2.1	3.76	1.26	1	6	21	27	7	3	4	41	25
1.2.2	4.05	1.75	1	7	19	21	5	9	1	36	26
1.2.3	3.29	1.68	1	7	21	24	6	4	2	36	20
1.2.4	4.20	1.21	2	6	15	25	5	5	1	36	18
1.2.5	4.40	1.47	1	6	20	22	3	9	2	36	27
1.2.6	4.63	1.77	1	7	19	22	6	2	4	34	22
1.2.7	4.81	1.28	3	7	16	23	2	6	3	34	23
1.2.8	4.23	1.74	1	7	13	22	4	6	2	34	22
1.2.9	4.57	1.22	2	7	14	27	0	4	5	36	23
1.2.10	4.00	1.46	2	7	15	24	4	3	3	34	19
1.2.11	4.33	1.80	1	7	15	24	2	6	2	34	20
1.2.12	4.33	1.44	2	7	12	27	2	3	2	34	14
1.2.13	4.43	1.22	3	7	14	25	3	4	3	35	20

* Weighted sum: Sum of the respondents weighted with the specific criteria (0,1,2,3)

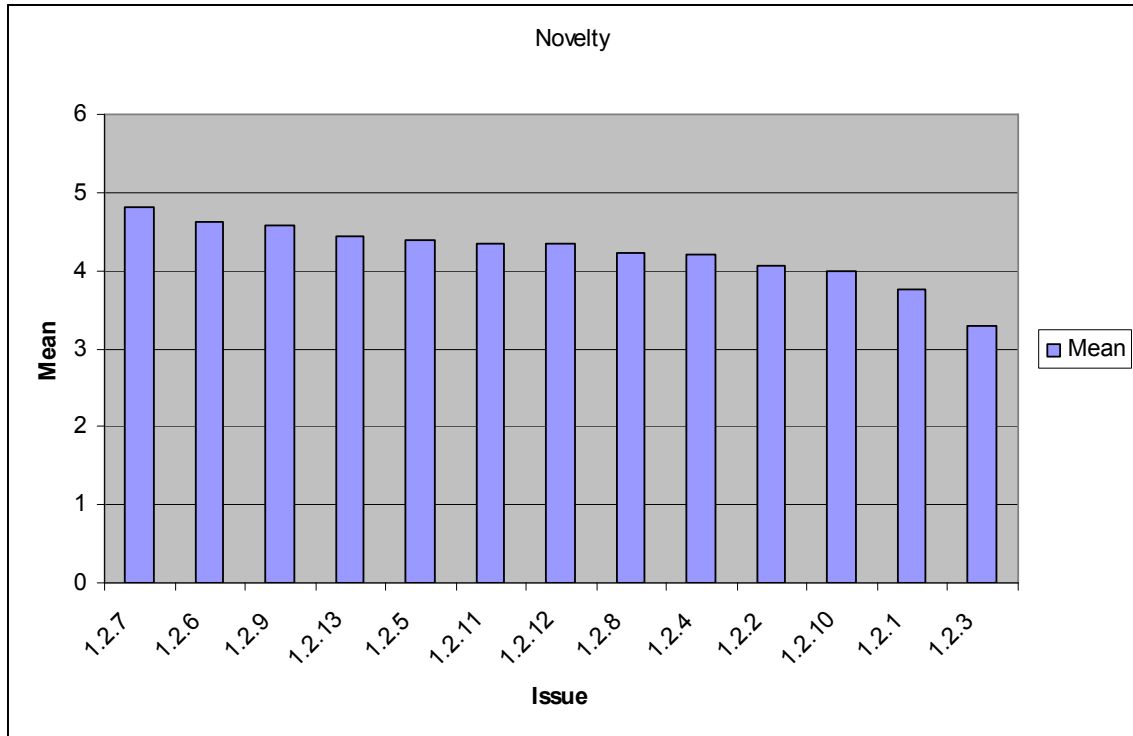


Figure 3 Sub-area 1.2 Novelty

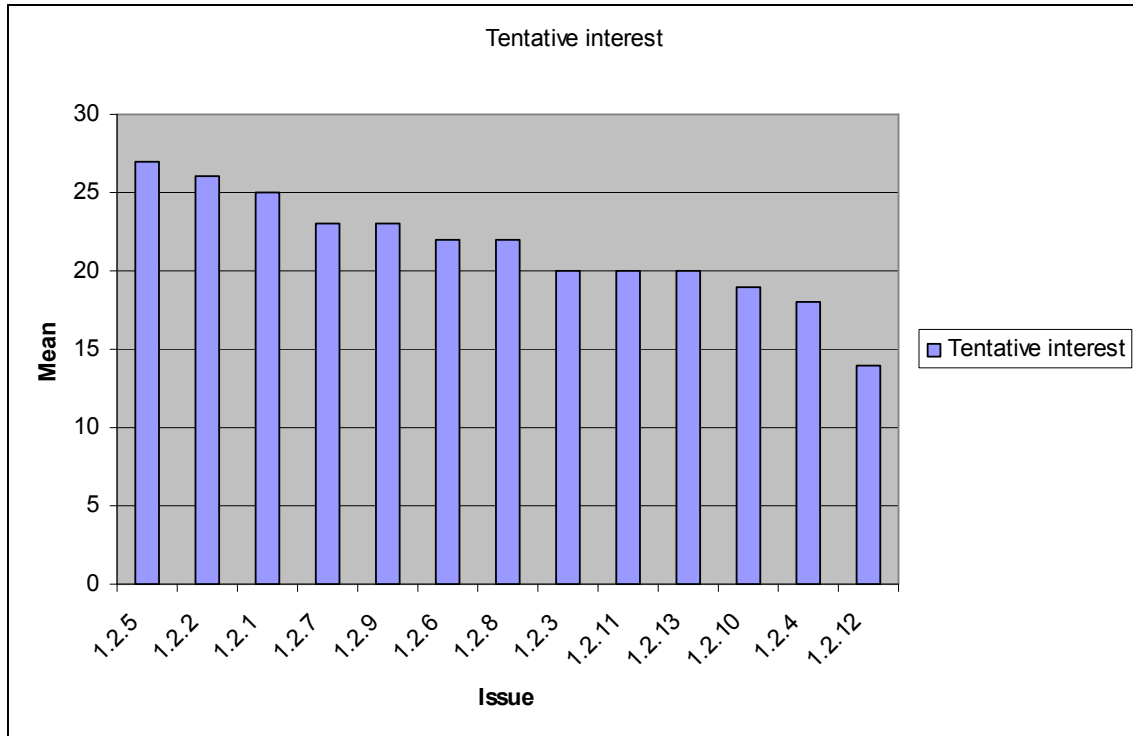


Figure 4 Sub-area 1.2 Tentative interest

Sub-area 1.3

Table 3 Sub-area 1.3 Statistics from Task 2

Issue	Novelty					Tentative interest					
	Mean	Std	min	max	respodents	0	1	2	3	Respodents	Weighted sum*
1.3.1	3.67	1.03	2	5	18	48	2	5	4	59	24
1.3.2	3.92	1.16	2	6	12	46	3	5	1	55	16
1.3.3	3.84	1.21	2	6	19	42	5	7	0	54	19
1.3.4	3.64	1.65	1	6	14	42	4	5	2	53	20
1.3.5	4.00	1.84	1	7	14	44	3	3	3	53	18
1.3.6	5.00	1.04	3	6	12	42	3	4	4	53	23
1.3.7	4.11	1.23	2	6	18	39	1	7	5	52	30
1.3.8	3.92	2.15	1	7	12	44	2	3	3	52	17
1.3.9	4.14	1.46	2	7	14	43	2	4	3	52	19
1.3.10	4.13	1.31	3	7	16	41	6	4	1	52	17
1.3.11	5.05	1.24	3	7	21	34	6	6	5	51	33
1.3.12	4.50	1.45	3	7	12	43	2	3	3	51	17
1.3.13	3.64	1.39	2	6	14	41	3	3	3	50	18
1.3.14	3.60	2.17	1	7	10	46	0	3	1	50	9
1.3.15	3.22	1.92	1	6	9	45	0	6	0	51	12
1.3.16	4.45	1.37	2	6	11	40	2	6	1	49	17
1.3.17	4.17	1.34	3	7	12	39	3	6	1	49	18
1.3.18	4.11	1.70	1	7	19	33	5	5	6	49	33
1.3.19	4.39	1.72	1	7	18	38	2	4	5	49	25
1.3.20	4.19	1.60	2	7	16	36	2	5	4	47	24
1.3.21	3.00	1.66	1	5	9	41	2	3	1	47	11
1.3.22	4.80	1.62	3	7	10	40	0	3	4	47	18
1.3.23	4.29	1.73	1	7	14	36	5	4	2	47	19
1.3.24	3.85	1.46	2	6	13	39	2	6	0	47	14
1.3.25	4.20	1.82	1	7	15	38	2	5	3	48	21
1.3.26	3.70	1.64	2	6	10	41	0	2	3	46	13
1.3.27	3.00	1.41	1	5	9	41	0	2	2	45	10
1.3.28	3.79	1.53	1	6	14	36	2	3	3	44	17
1.3.29	4.60	1.39	2	7	20	30	3	8	3	44	28
1.3.30	4.22	1.39	2	6	9	37	2	3	1	43	11
1.3.31	4.25	2.14	1	7	12	36	1	3	3	43	16
1.3.32	3.55	1.29	2	6	11	37	3	2	1	43	10
1.3.33	3.71	1.21	2	6	17	33	4	4	3	44	21
1.3.34	3.67	1.59	1	6	15	31	4	4	3	42	21
1.3.35	4.50	1.65	1	6	14	36	2	3	3	44	17
1.3.36	4.20	1.48	2	6	5	41	0	1	0	42	2
1.3.37	2.64	1.60	1	5	14	36	2	4	0	42	10

* Weighted sum: Sum of the respondents weighted with the specific criteria (0,1,2,3)

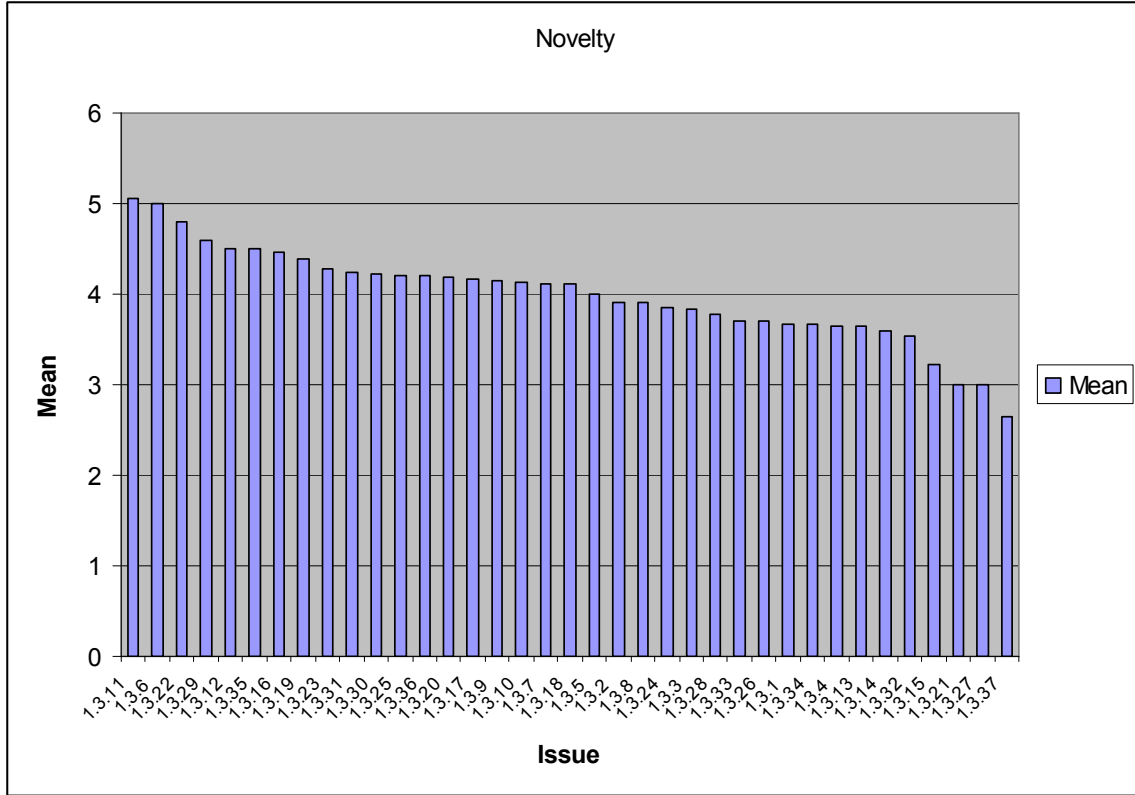


Figure 5 Sub-area 1.3 Novelty

Collaborative shaping of Research Agendas in WoodWisdom-net
Workshop Tue 14 2006: New value added products and production
Results from Task 2

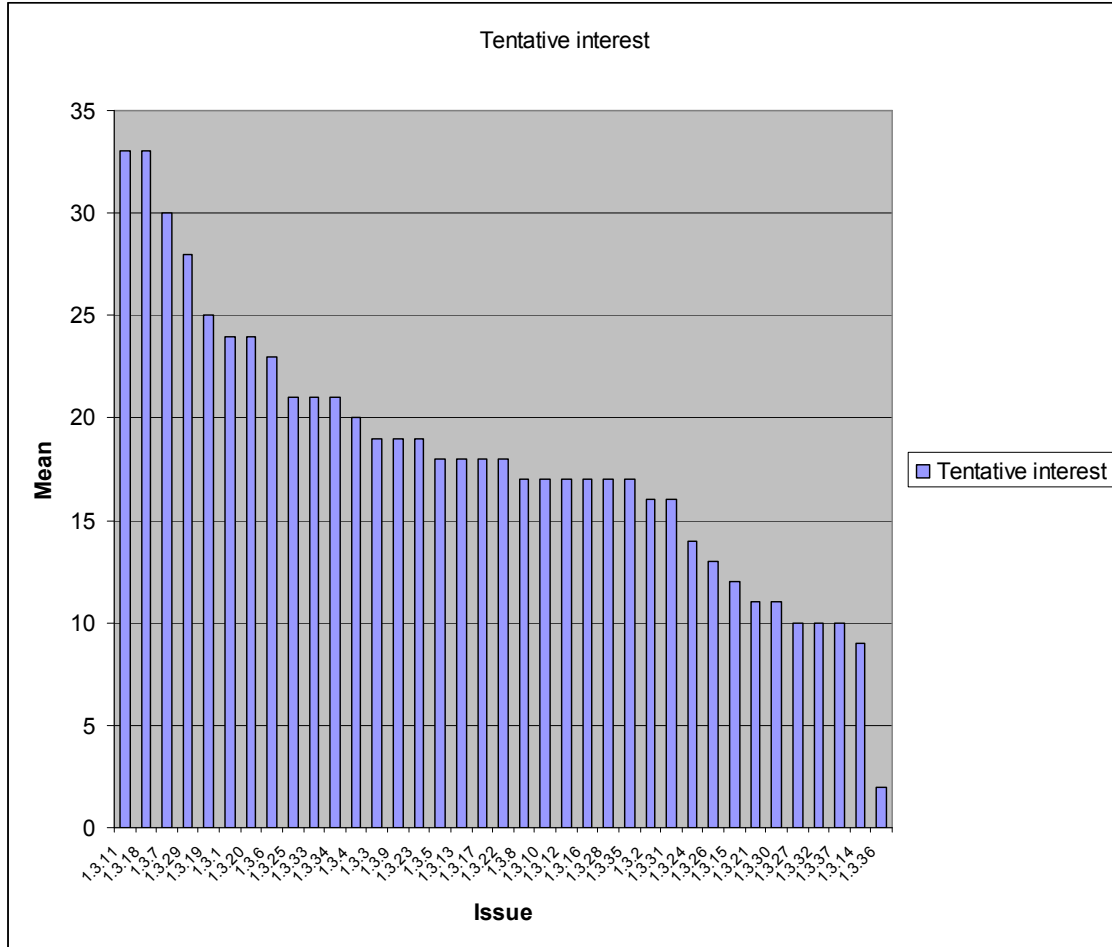


Figure 6 Sub-area 1.3 Tentative interest

Sub-area 1.4

Table 4 Sub-area 1.4 Statistics from Task 2

Issue	Novelty					Tentative interest					
	Mean	Std	min	max	respodents	0	1	2	3	Respodents	Weighted sum
1.4.1	4.59	1.77	1	7	17	20	6	5	3	34	25
1.4.2	3.14	1.66	1	6	14	26	2	4	1	33	13
1.4.3	3.31	1.89	1	7	13	26	3	1	2	32	11
1.4.4	4.19	1.64	1	7	16	20	5	5	2	32	21
1.4.5	3.08	1.93	1	6	13	25	1	4	1	31	12
1.4.6	3.53	1.41	1	5	15	21	3	5	2	31	19
1.4.7	3.70	1.77	1	7	10	26	1	0	4	31	13
1.4.8	3.23	1.42	1	6	13	21	4	5	0	30	14

* Weighted sum: Sum of the respondents weighted with the specific criteria (0,1,2,3)

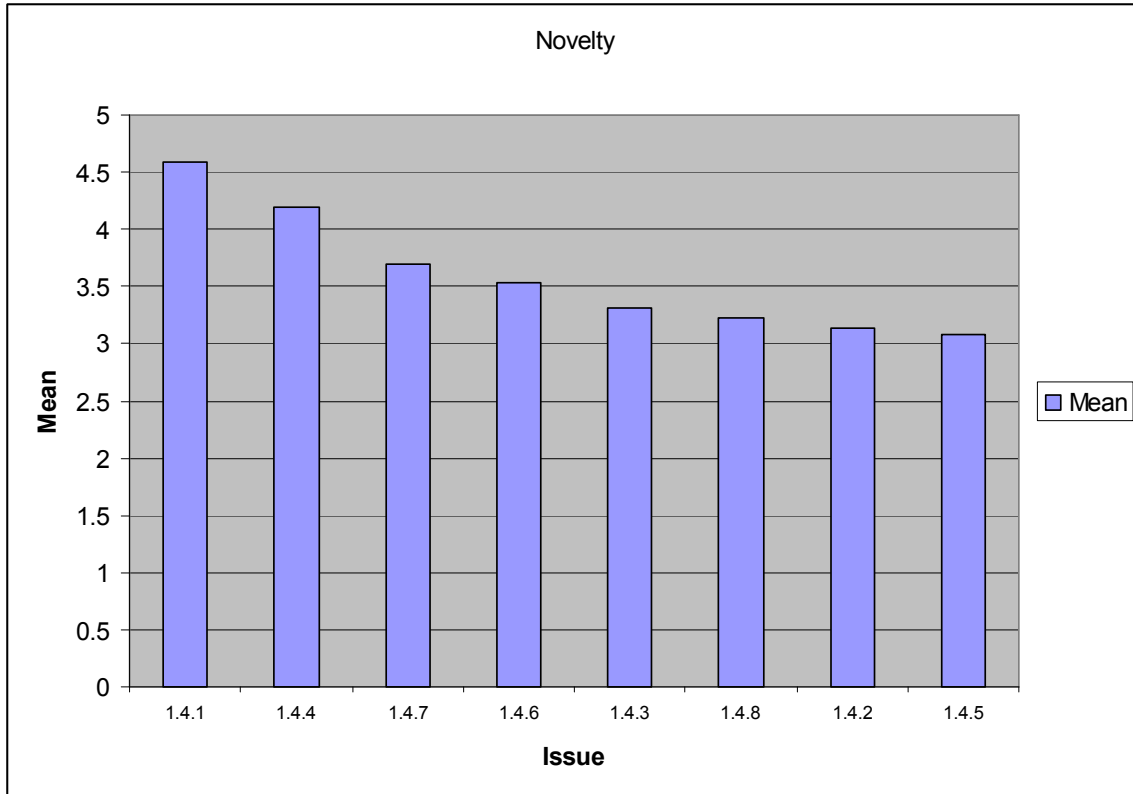


Figure 7 Sub-area 1.4 Novelty

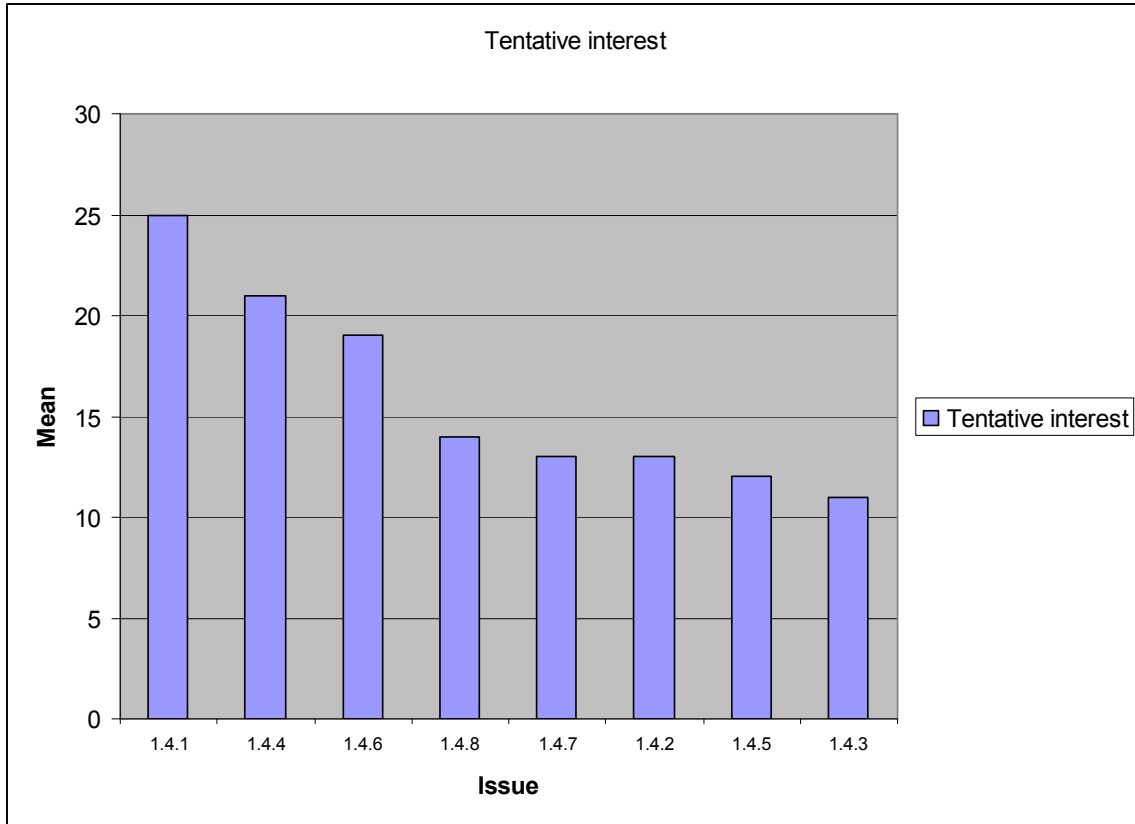


Figure 8 Sub-area 1.4 Tentative interest

Sub-area 1.5

Table 5 Sub-area 1.5 Statistics from Task 2

Issue	Novelty					Tentative interest					
	Mean	Std	min	max	respodents	0	1	2	3	Respodents	Weighted sum
1.5.1	3.93	1.27	2	6	14	38	3	0	4	45	15
1.5.2	3.64	1.43	1	5	11	38	3	1	0	42	5
1.5.3	2.93	1.71	1	7	15	35	3	2	2	42	13
1.5.4	3.08	1.66	1	6	13	37	2	2	0	41	6
1.5.5	4.00	1.33	2	6	10	35	2	2	1	40	9
1.5.6	4.00	1.00	3	6	9	33	6	1	0	40	8
1.5.7	5.09	1.22	3	7	11	35	1	2	2	40	11
1.5.8	3.55	2.02	1	7	11	37	0	1	2	40	8
1.5.9	3.50	1.58	2	6	10	35	2	2	1	40	9
1.5.10	3.50	1.56	1	6	14	32	4	4	0	40	12
1.5.11	3.40	1.51	1	5	10	35	2	3	0	40	8
1.5.12	4.67	1.41	3	7	9	35	0	2	3	40	13
1.5.13	4.13	1.63	1	7	16	31	2	4	3	40	19
1.5.14	3.93	1.91	1	6	15	34	3	2	2	41	13
1.5.15	4.17	1.80	1	7	12	33	2	3	2	40	14
1.5.16	4.19	1.52	2	6	16	30	2	2	6	40	24
1.5.17	2.86	1.95	1	6	7	38	0	1	0	39	2
1.5.18	3.10	1.60	1	6	10	36	1	0	2	39	7

* Weighted sum: Sum of the respondents weighted with the specific criteria (0,1,2,3)

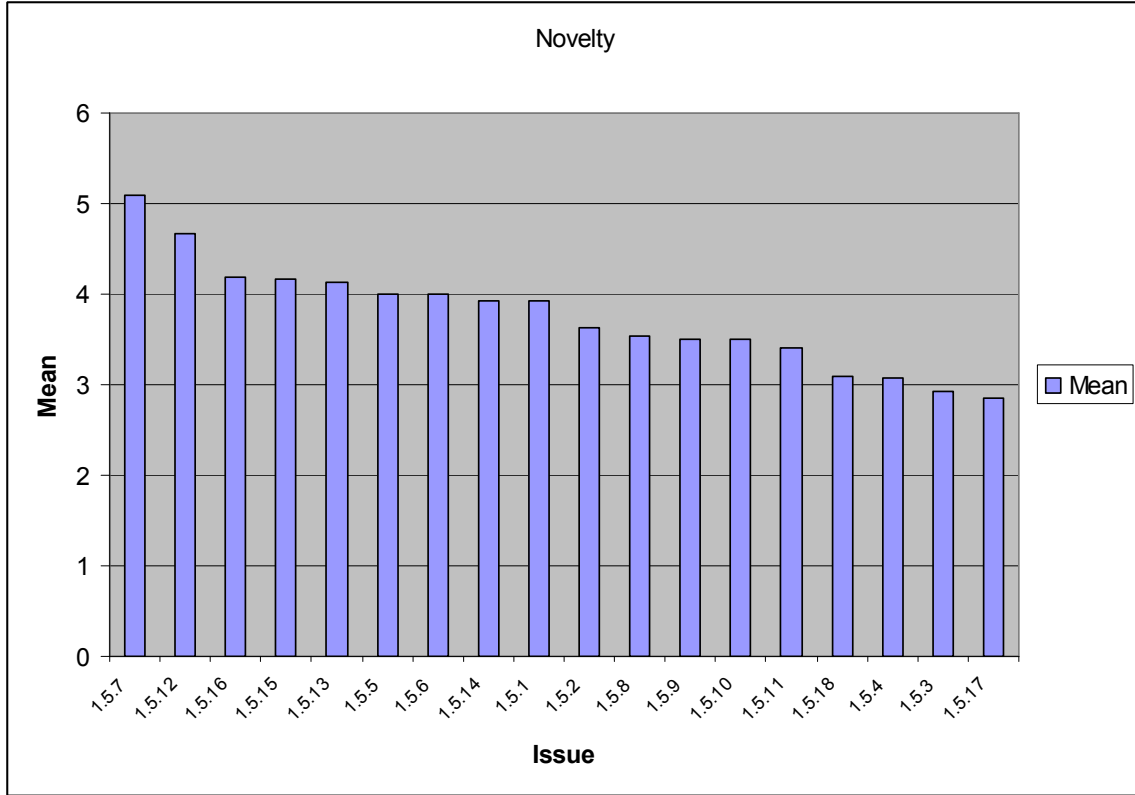


Figure 9 Sub-area 1.5 Novelty

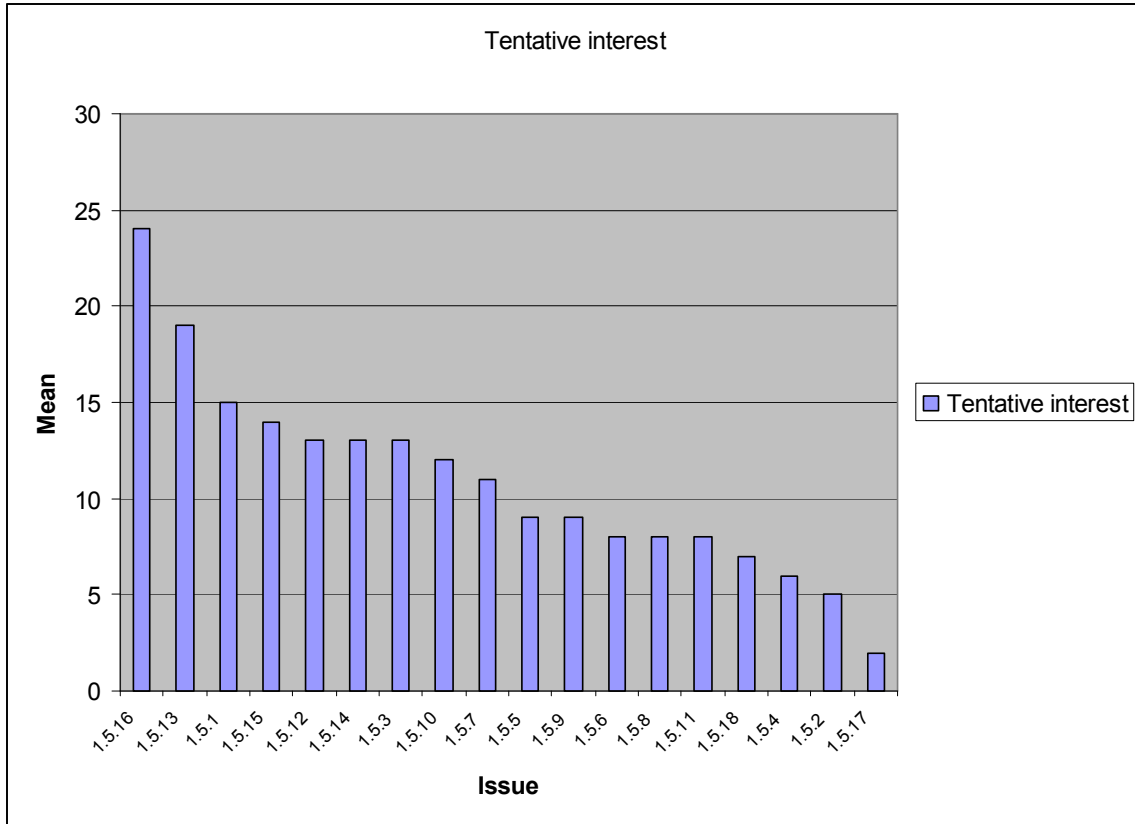


Figure 10 Sub-area 1.5 Tentative interest

Sub-area 1.N

Table 6 Sub-area 1.N Statistics from Task 2

Issue	Novelty					Tentative interest					
	Mean	Std	min	max	respodents	0	1	2	3	Respodents	Weighted sum
1.N.1	2.92	1.16	1	5	12	34	0	3	0	37	6
1.N.2	4.50	1.45	2	7	12	27	2	5	2	36	18
1.N.3	2.90	1.60	1	6	10	33	2	0	1	36	5
1.N.4	4.63	1.50	1	7	16	26	3	4	4	37	23
1.N.5	3.55	1.86	1	7	11	29	1	4	1	35	12
1.N.6	4.44	1.31	2	6	16	23	3	9	1	36	24
1.N.7	4.14	2.19	1	7	7	32	2	0	1	35	5

* Weighted sum: Sum of the respondents weighted with the specific criteria (0,1,2,3)

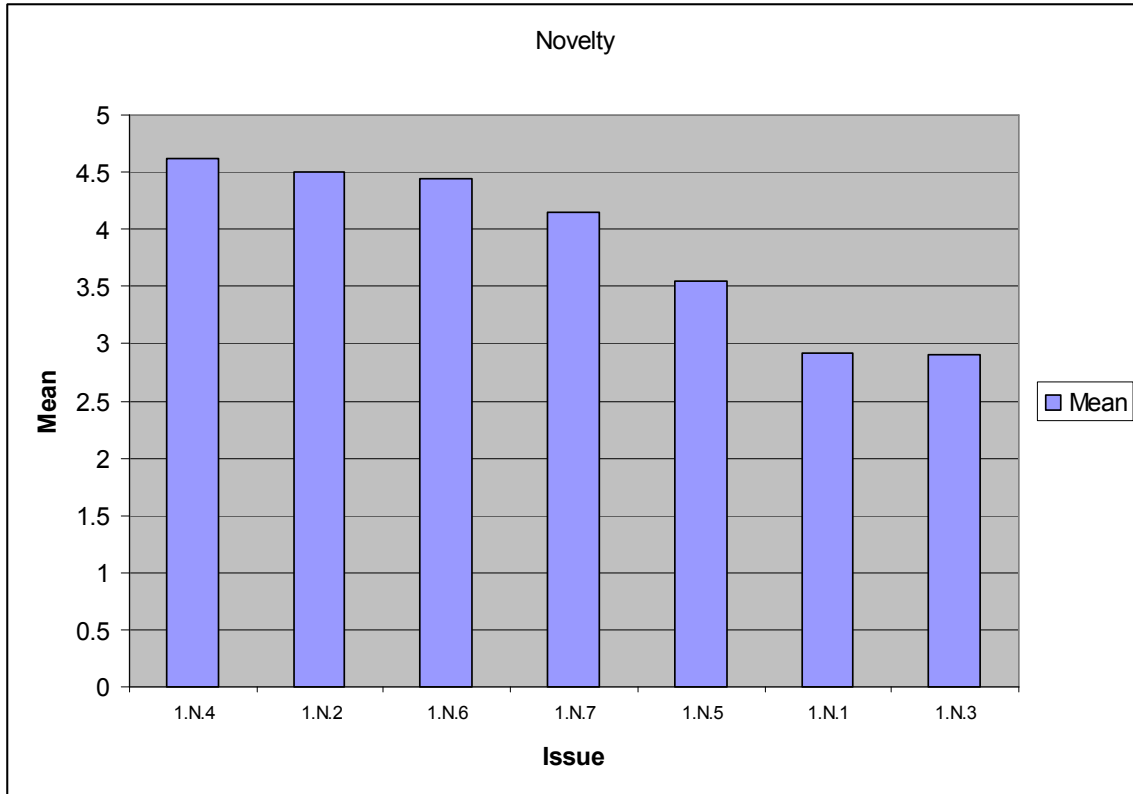


Figure 31 Sub-area 1.N Novelty

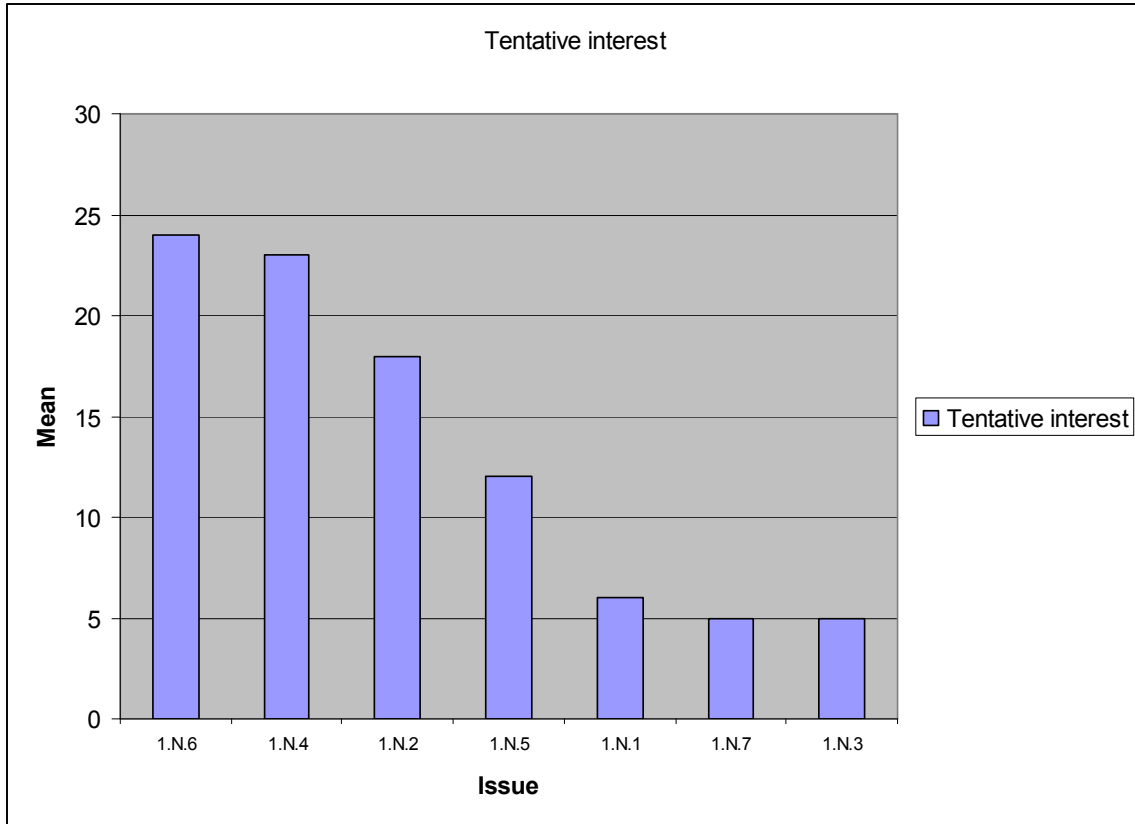


Figure 14 Sub-area 1.N Tentative interest

Sub-area 2.1

Table 7 Sub-area 2.1 Statistics from Task 2

Issue	Novelty					Tentative interest					
	Mean	Std	min	max	Respondents	0	1	2	3	Respondents	Weighted sum
2.1.1	4.14	1.10	3	7	14	42	6	3	1	52	15
2.1.2	3.71	1.59	1	7	14	41	5	3	1	50	14
2.1.3	2.60	2.22	1	7	10	44	2	2	1	49	9
2.1.4	3.63	1.74	1	7	19	35	6	8	0	49	22
2.1.5	3.75	1.48	1	6	16	41	4	3	1	49	13
2.1.6	3.10	1.37	1	5	10	44	2	3	0	49	8
2.1.7	3.60	1.71	1	7	10	42	2	3	1	48	11
2.1.8	4.38	1.26	3	6	16	38	4	4	3	49	21
2.1.9	4.61	1.31	1	6	23	34	1	7	6	48	33
2.1.10	3.62	1.19	2	5	13	40	5	3	0	48	11
2.1.11	3.38	1.51	2	6	8	44	2	1	1	48	7
2.1.12	3.19	1.47	1	5	16	40	2	4	1	47	13
2.1.13	4.65	1.58	1	7	23	33	6	5	5	49	31
2.1.14	4.46	1.13	2	6	13	37	5	4	1	47	16
2.1.15	4.31	0.95	3	6	13	38	3	3	2	46	15
2.1.16	4.29	1.40	2	7	17	35	2	5	4	46	24
2.1.17	3.20	2.04	1	7	10	39	2	2	1	44	9
2.1.18	4.00	0.93	3	5	15	35	4	3	2	44	16
2.1.19	3.54	1.33	2	6	13	35	4	4	1	44	15
2.1.20	4.31	1.84	1	7	13	35	5	1	3	44	16
2.1.21	3.22	1.92	1	6	9	39	3	2	1	45	10
2.1.22	2.88	1.36	1	5	8	40	4	0	0	44	4
2.1.23	4.17	1.59	2	7	12	35	4	2	3	44	17
2.1.24	3.33	1.63	1	5	6	40	0	3	1	44	9
2.1.25	3.64	1.03	2	5	11	35	3	1	2	41	11
2.1.26	3.64	1.65	1	7	14	32	5	2	2	41	15
2.1.27	3.82	1.17	2	6	11	32	4	5	0	41	14
2.1.28	4.25	0.97	3	5	12	34	3	4	0	41	11
2.1.29	3.88	1.36	2	5	8	37	2	1	1	41	7

* Weighted sum: Sum of the respondents weighted with the specific criteria (0,1,2,3)

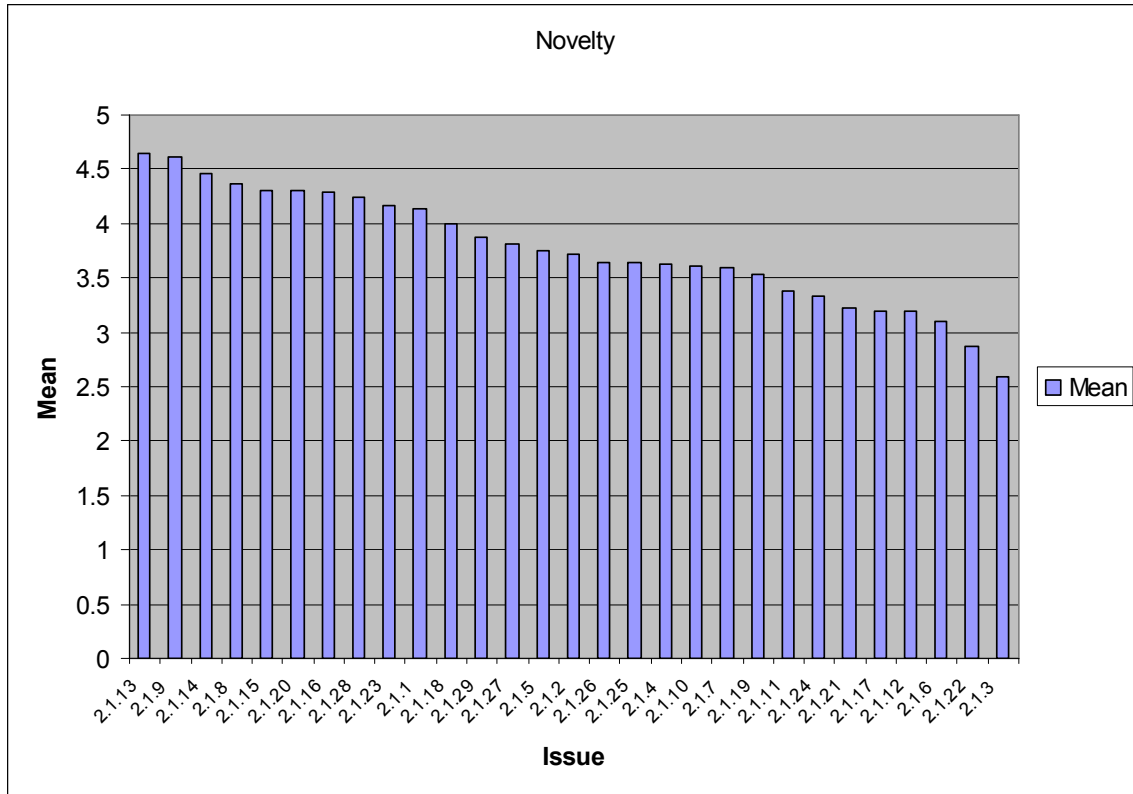


Figure 53 Sub-area 2.1 Novelty

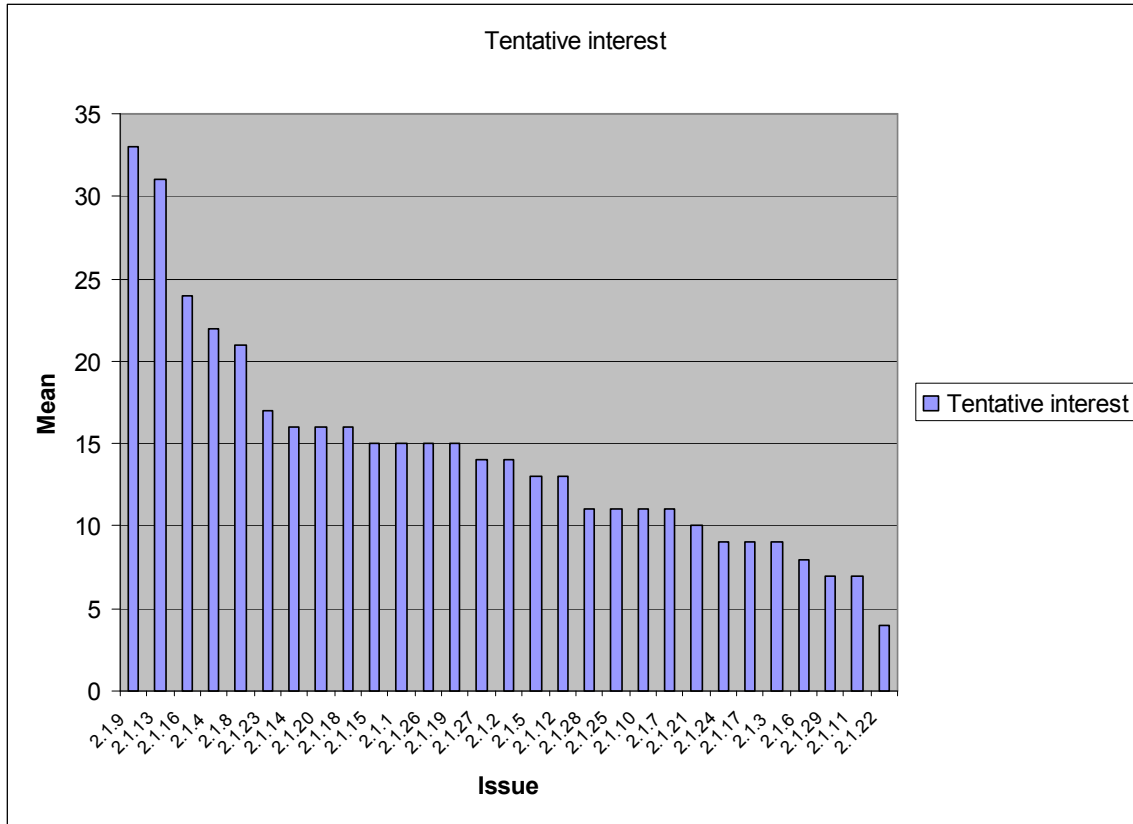


Figure 14 Sub-area 2.1 Tentative interest

Sub-area 2.2

Table 8 Sub-area 2.2 Statistics from Task 2

Issue	Novelty					Tentative interest					
	Mean	Std	min	max	Respondents	0	1	2	3	Respondents	Weighted sum
2.2.1	3.90	1.79	1	6	10	28	1	3	1	33	10
2.2.2	3.70	1.49	1	6	10	26	1	3	1	31	10
2.2.3	3.00	1.73	1	5	11	25	1	4	0	30	9
2.2.4	4.90	1.52	3	7	10	25	3	1	1	30	8
2.2.5	4.00	2.31	1	7	7	26	1	3	0	30	7
2.2.6	3.89	1.05	2	5	9	24	2	3	1	30	11
2.2.7	3.25	1.48	1	5	12	23	2	3	2	30	14
2.2.8	4.14	2.19	1	7	7	27	0	2	2	31	10
2.2.9	3.14	2.48	1	7	7	28	0	2	1	31	7

* Weighted sum: Sum of the respondents weighted with the specific criteria (0,1,2,3)

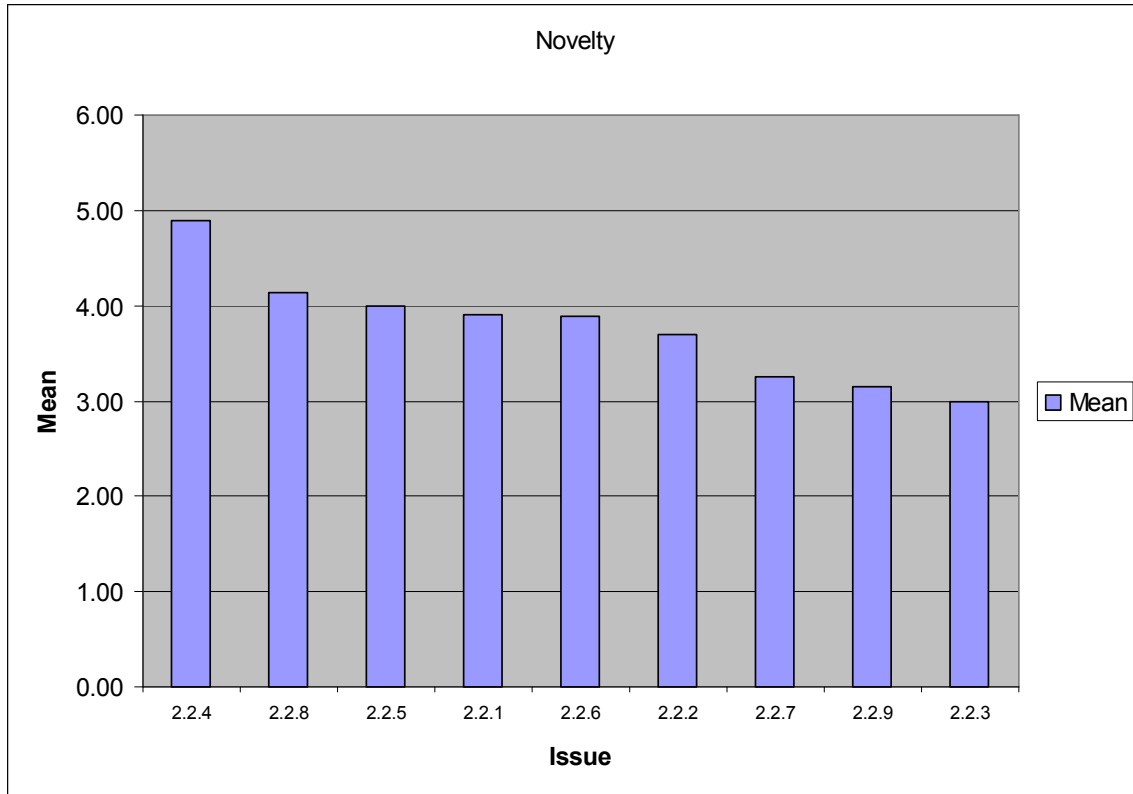


Figure 65 Sub-area 2.2 Novelty

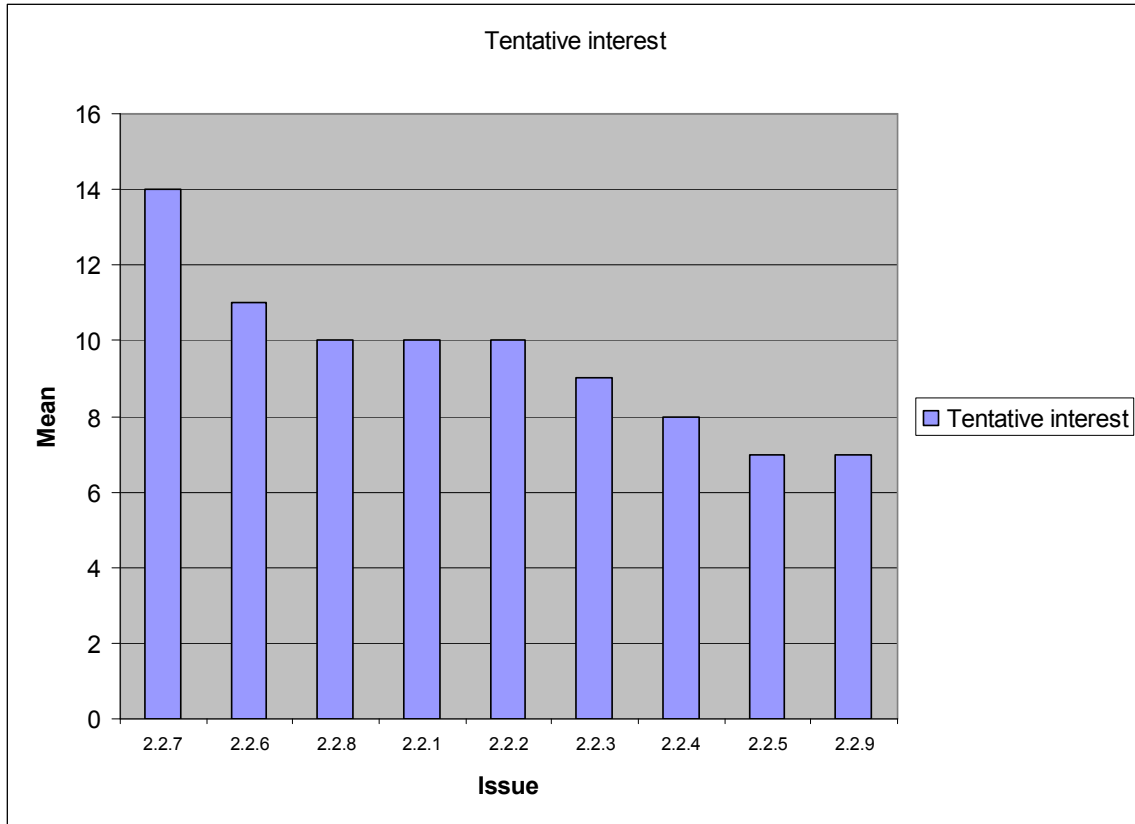


Figure 16 Sub-area 2.2 Tentative interest

Sub-area 2.3

Table 9 Sub-area 2.3 Statistics from Task 2

Issue	Novelty					Tentative interest					
	Mean	Std	min	max	Respondents	0	1	2	3	Respondents	Weighted sum
2.3.1	3.50	2.00	1	7	8	18	0	3	0	21	6
2.3.2	2.50	1.73	1	5	4	18	0	0	1	19	3

* Weighted sum: Sum of the respondents weighted with the specific criteria (0,1,2,3)

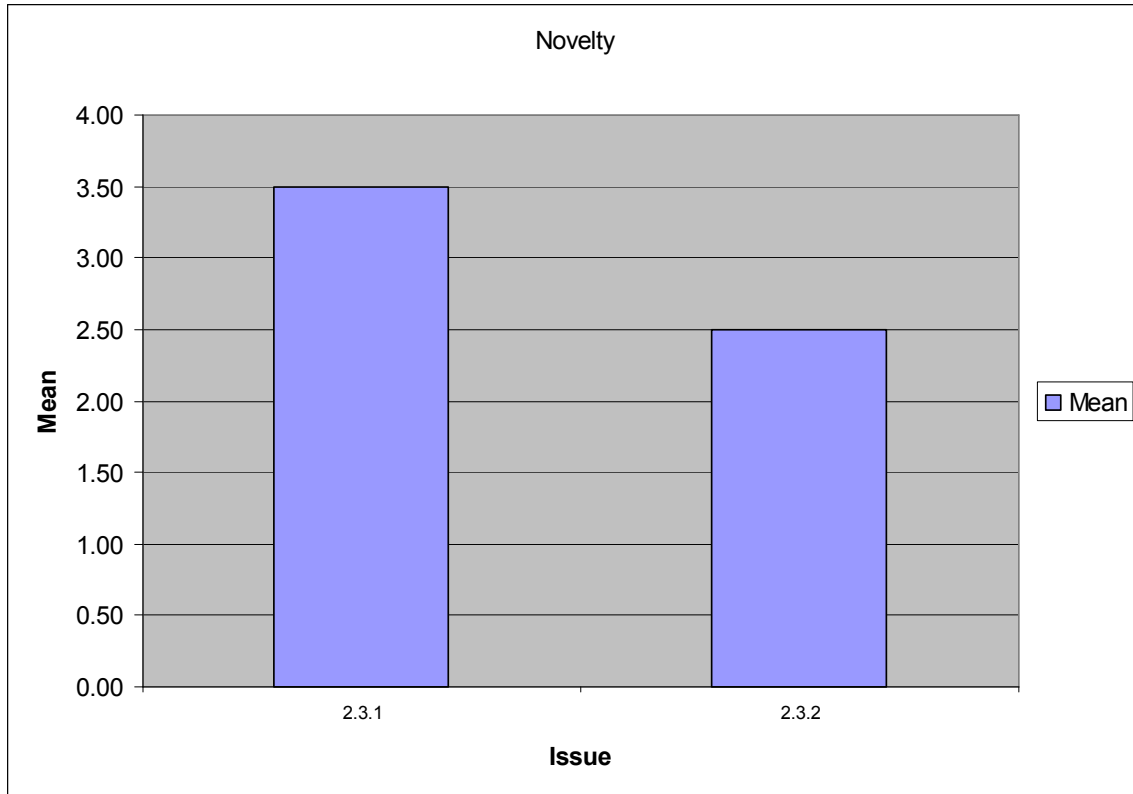


Figure 77 Sub-area 2.3 Novelty

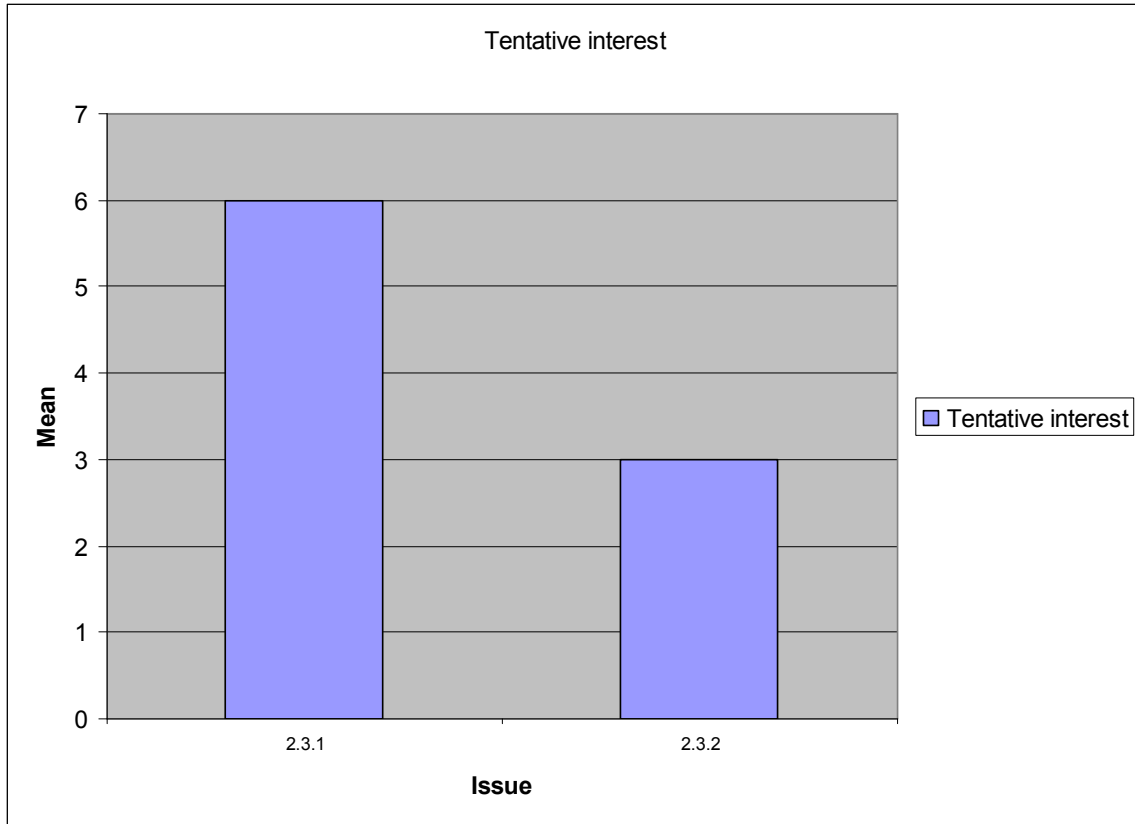


Figure 18 Sub-area 2.3 Tentative interest

Sub-area 2.4

Table 20 Sub-area 2.4 Statistics from Task 2

Issue	Novelty					Tentative interest					
	Mean	Std	min	max	Respondents	0	1	2	3	Respondents	Weighted sum
2.4.1	3.85	1.34	1	7	13	12	3	6	1	22	18
2.4.2	2.00	1.00	1	3	5	18	1	0	0	19	1
2.4.3	3.00	1.10	2	4	6	18	2	0	0	20	2
2.4.4	3.57	1.81	2	7	7	15	2	1	1	19	7
2.4.5	4.13	1.96	2	7	8	12	4	0	2	18	10

* Weighted sum: Sum of the respondents weighted with the specific criteria (0,1,2,3)

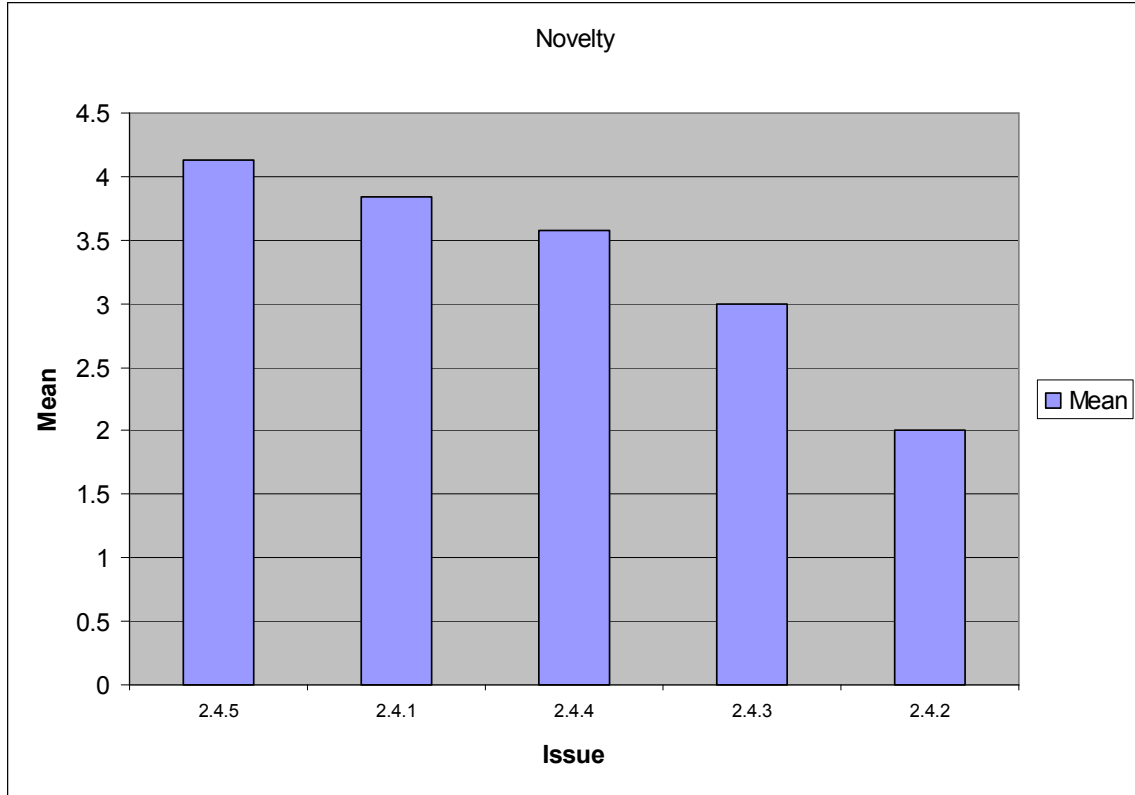


Figure 89 Sub-area 2.4 Novelty

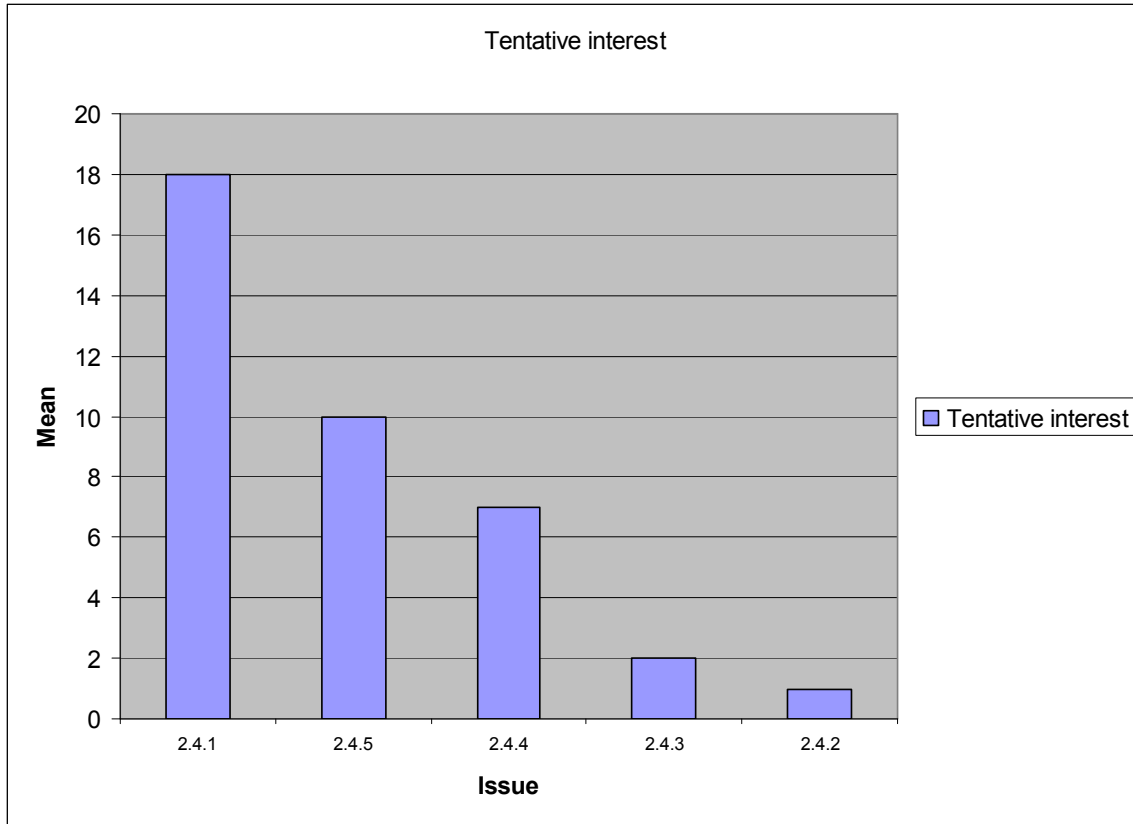


Figure 90 Sub-area 2.4 Tentative interest

Sub-area 2.5

Table 31 Sub-area 2.5 Statistics from Task 2

Issue	Novelty					Tentative interest					
	Mean	Std	min	max	Respondents	0	1	2	3	Respondents	Weighted sum
2.5.1	1.86	1.46	1	5	7	25	0	1	1	27	5
2.5.2	3.89	2.03	1	7	9	19	2	2	3	26	15
2.5.3	4.00	1.58	2	6	5	25	1	0	0	26	1
2.5.4	4.00	2.26	1	7	12	18	3	3	3	27	18
2.5.5	3.71	1.80	2	7	7	23	2	0	1	26	5
2.5.6	4.17	1.72	2	7	6	22	2	0	1	25	5
2.5.7	4.29	1.70	3	7	7	24	0	1	1	26	5

* Weighted sum: Sum of the respondents weighted with the specific criteria (0,1,2,3)

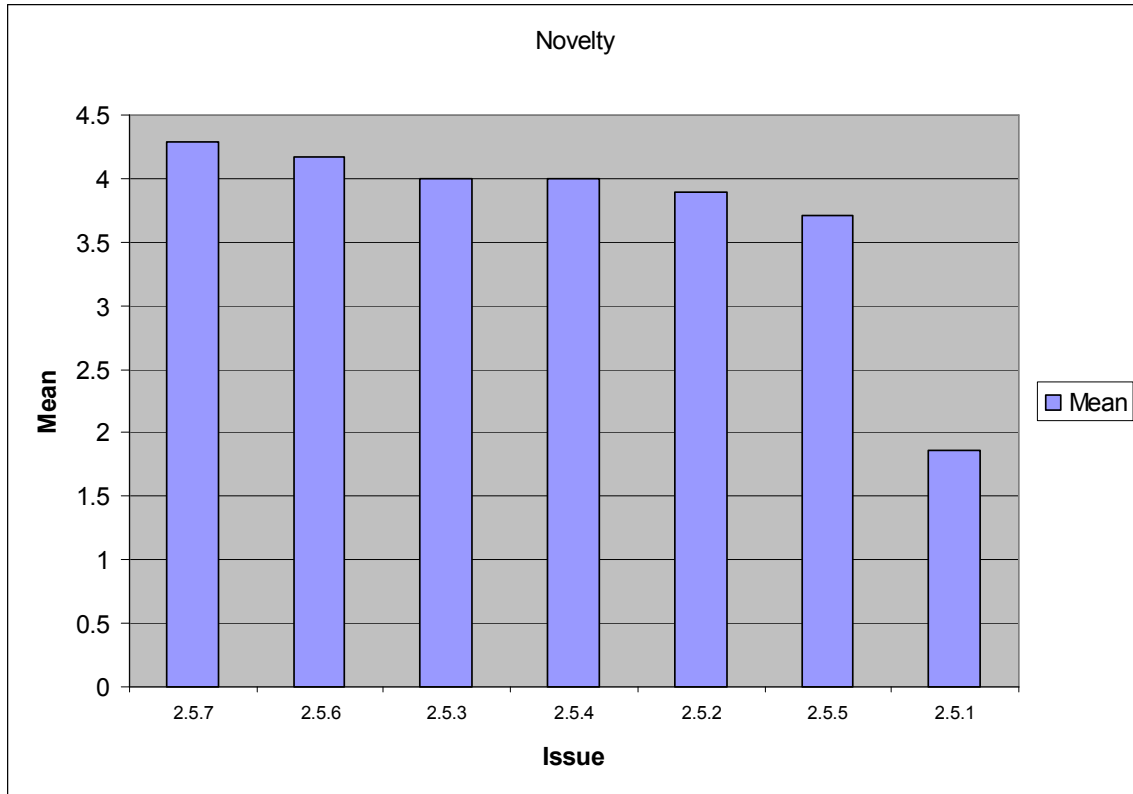


Figure 21 Sub-area 2.5 Novelty

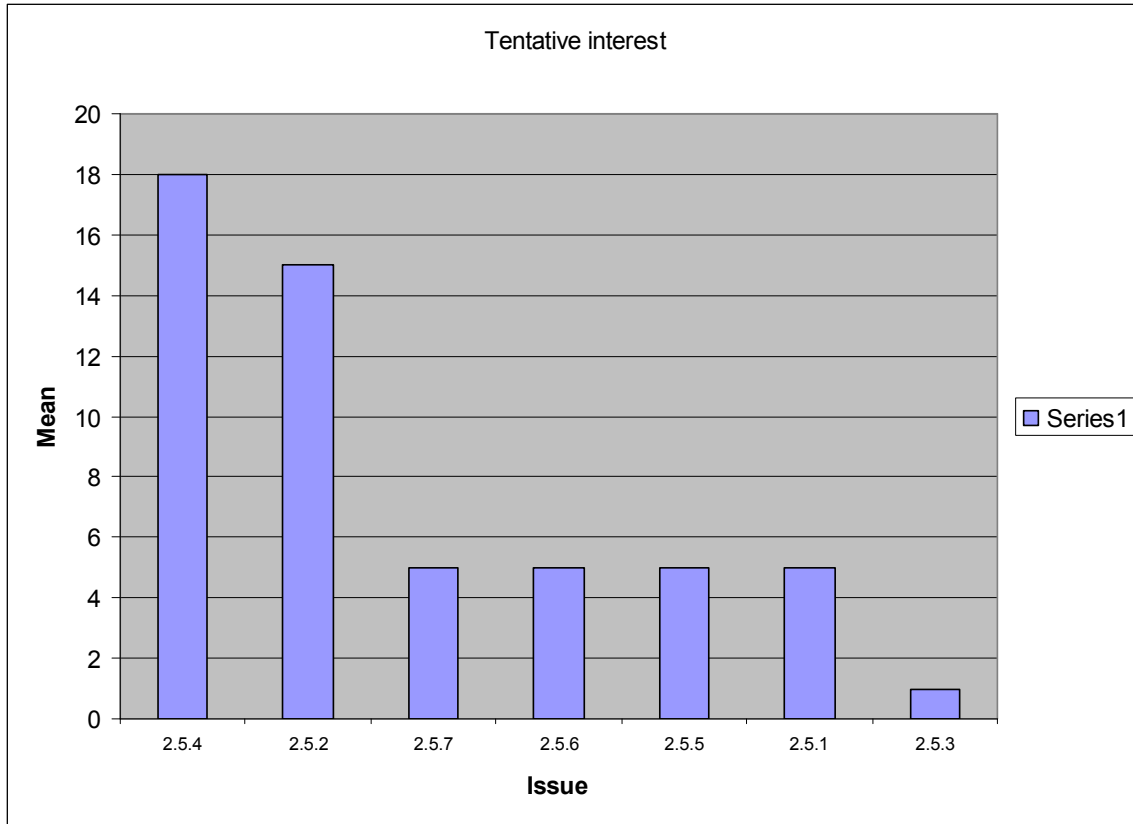


Figure 102 Sub-area 2.5 Tentative interest

Sub-area 2.N

Table 42 Sub-area 2.N Statistics from Task 2

Issue	Novelty					Tentative interest					
	Mean	Std	min	max	Respondents	0	1	2	3	Respondents	Weighted sum
2.N.1	3.33	2.00	1	7	9	22	1	2	0	25	5
2.N.2	3.14	1.57	1	5	7	23	0	1	0	24	2
2.N.3	3.63	1.41	2	6	8	22	1	2	0	25	5
2.N.4	4.20	1.10	3	5	5	24	1	0	0	25	1
2.N.5	4.50	2.39	1	7	8	19	1	0	4	24	13

* Weighted sum: Sum of the respondents weighted with the specific criteria (0,1,2,3)

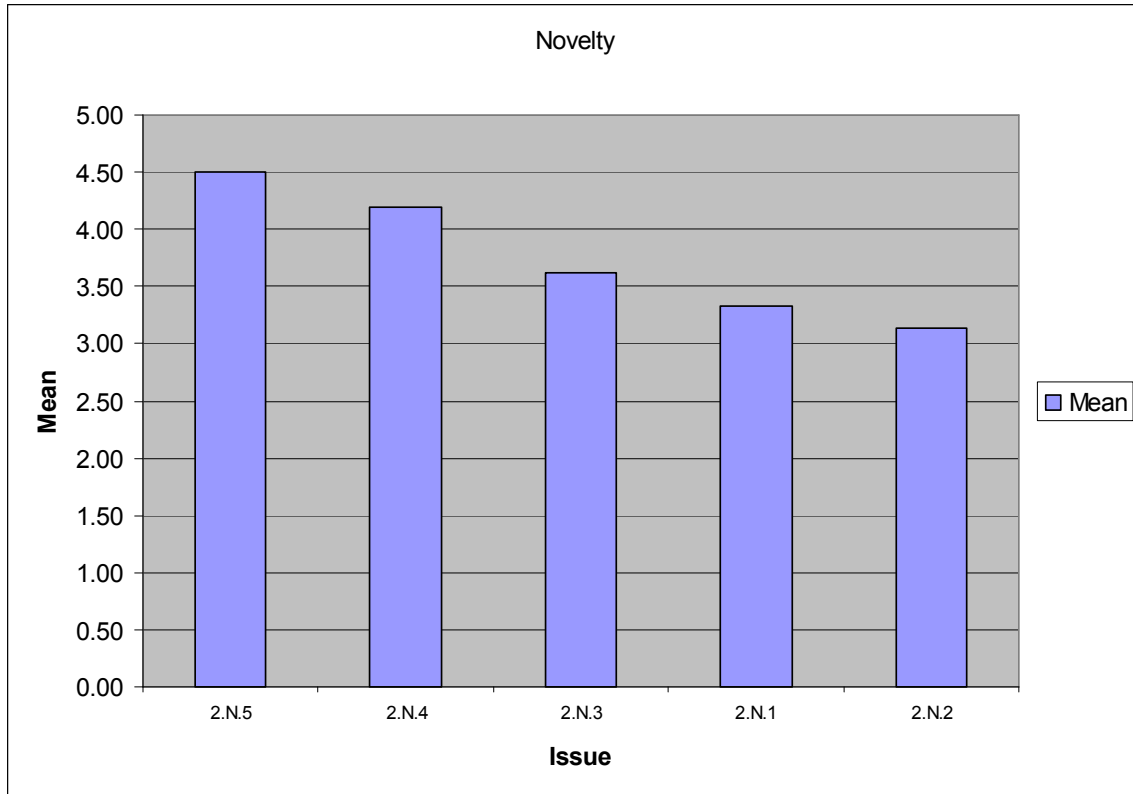


Figure 23 Sub-area 2.N Novelty

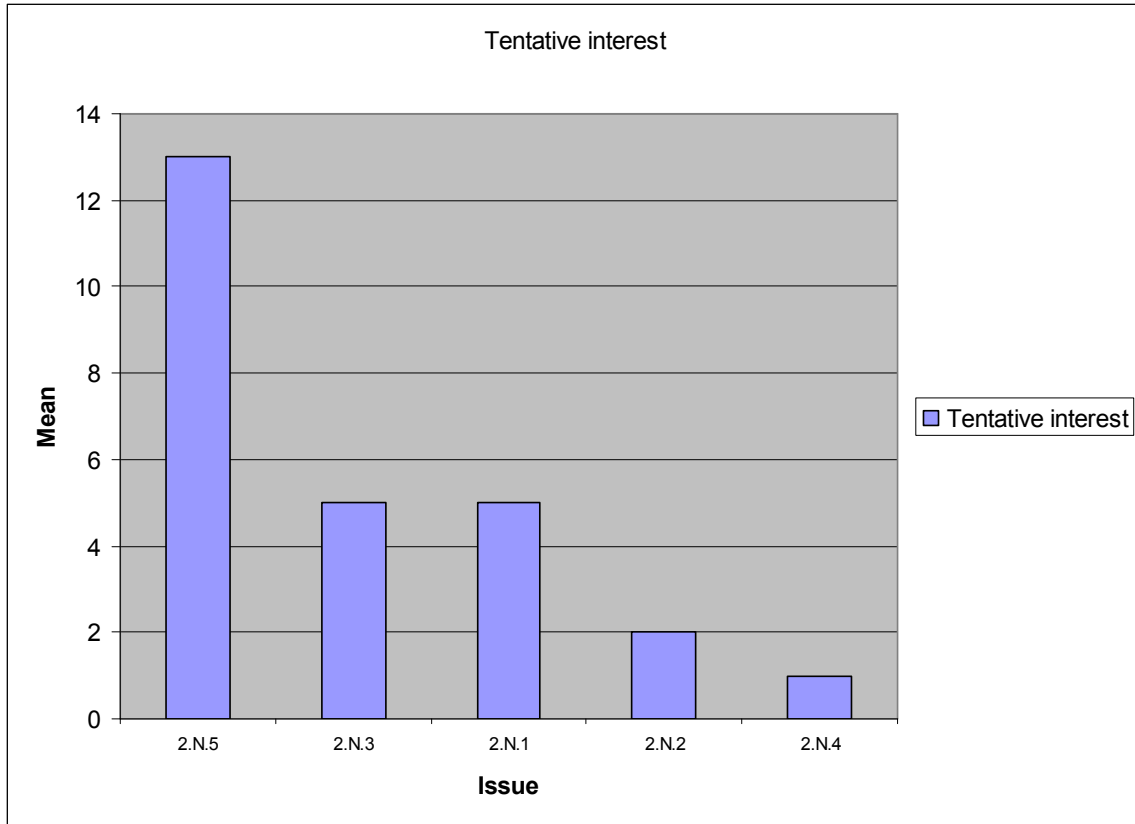


Figure 114 Sub-area 2.N Tentative interest

Sub-area 4.1

Table 13 Sub-area 4.1 Statistics from Task 2

Issue	Novelty					Tentative interest					
	Mean	Std	min	max	Respondents	0	1	2	3	Respondents	Weighted sum
4.1.1	2.75	1.71	1	5	4	21	0	1	0	22	2
4.1.2	4.00	1.00	3	5	3	19	1	0	0	20	1
4.1.3	3.75	1.50	2	5	4	18	2	1	0	21	4
4.1.4	4.56	1.33	2	7	9	16	0	2	2	20	10
4.1.5	4.33	2.06	1	7	9	17	1	1	1	20	6
4.1.6	5.33	1.58	3	7	9	14	1	2	3	20	14
4.1.7	3.71	2.06	1	7	7	18	0	1	1	20	5
4.1.8	3.75	1.26	2	5	4	16	2	0	0	18	2
4.1.9	4.80	1.79	3	7	5	16	0	1	1	18	5
4.1.10	2.50	1.73	1	4	4	17	0	0	1	18	3

* Weighted sum: Sum of the respondents weighted with the specific criteria (0,1,2,3)

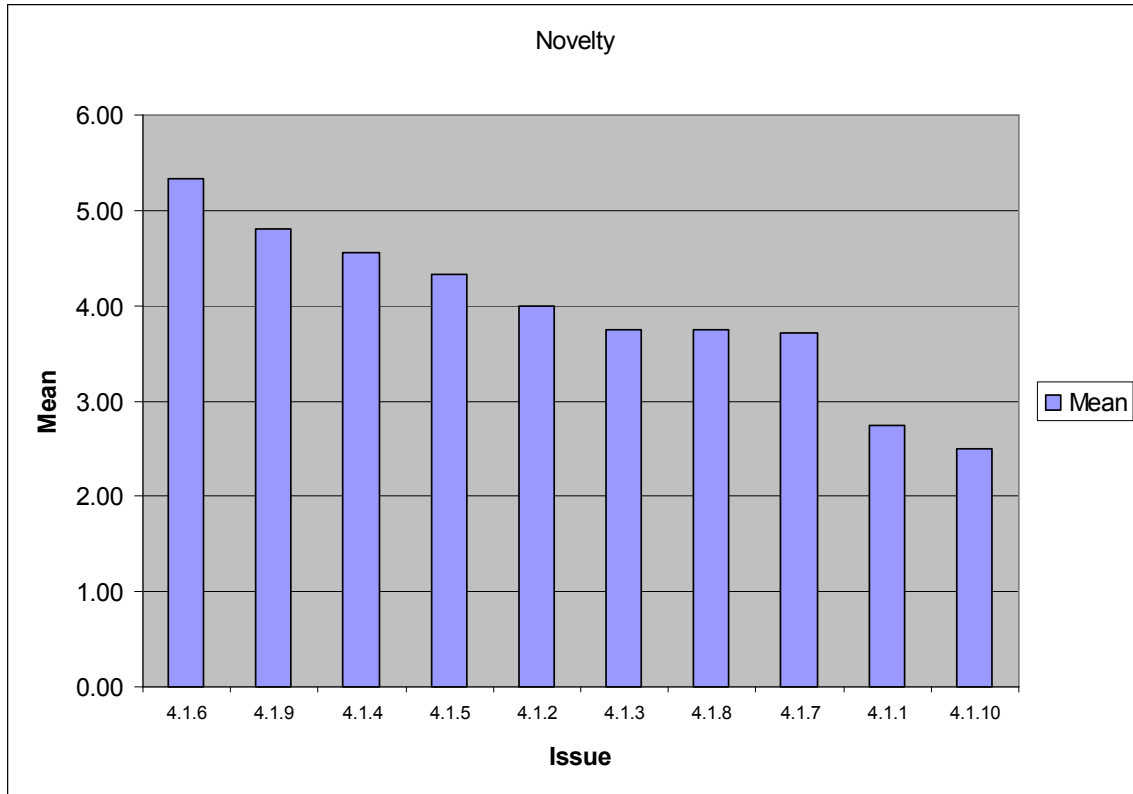


Figure 25 Sub-area 4.1 Novelty

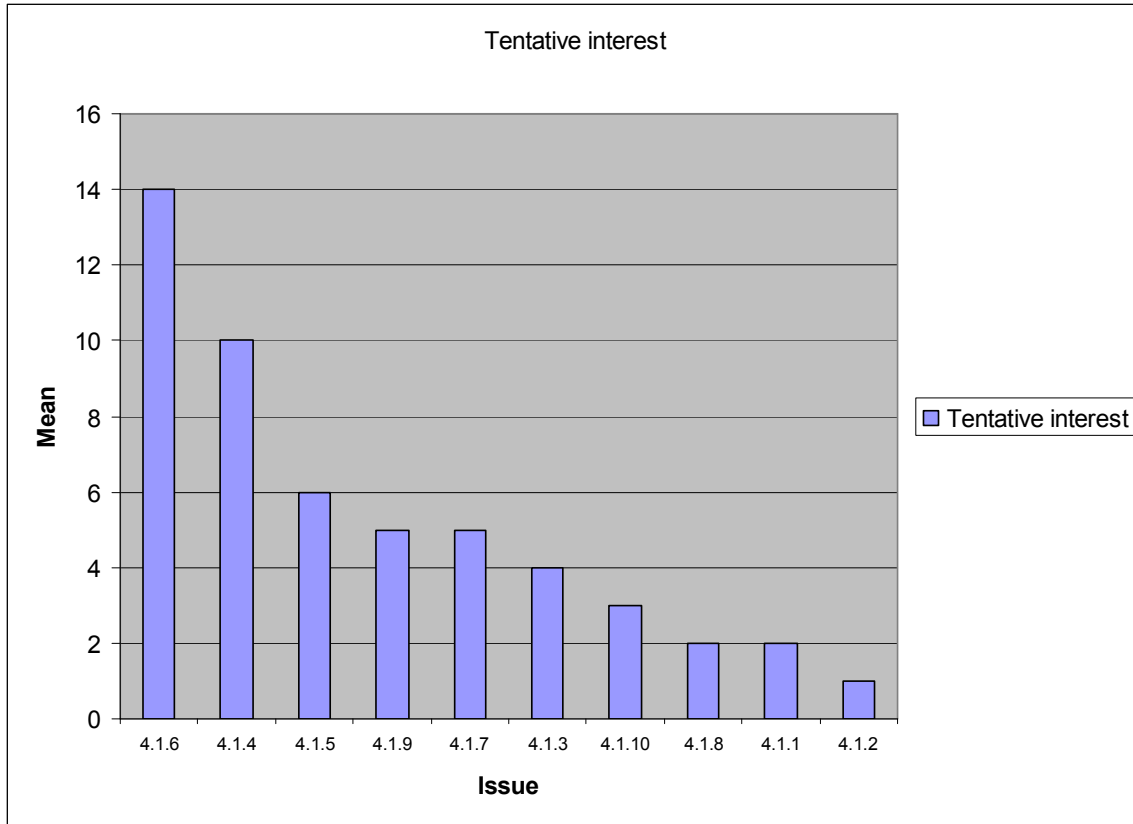


Figure 26 Sub-area 4.1 Tentative interest

Sub-area 4.2

Table 14 Sub-area 4.2 Statistics from Task 2

Issue	Novelty					Tentative interest					
	Mean	Std	min	max	Respondents	0	1	2	3	Respondents	Weighted sum
4.2.1	4.00	1.94	1	7	10	16	2	2	1	21	9
4.2.2	4.33	2.52	2	7	3	18	0	0	1	19	3
4.2.3	4.29	1.98	1	7	7	15	1	2	1	19	8
4.2.4	3.67	2.08	2	6	3	18	0	0	1	19	3
4.2.5	3.00	0.00	3	3	2	19	0	0	0	19	0
4.2.6	3.40	2.07	1	6	5	18	0	0	1	19	3
4.2.7	4.25	2.12	1	7	8	12	5	0	2	19	11
4.2.8	4.40	1.14	3	6	5	15	2	0	1	18	5
4.2.9	3.80	1.64	1	5	5	15	0	2	0	17	4

* Weighted sum: Sum of the respondents weighted with the specific criteria (0,1,2,3)

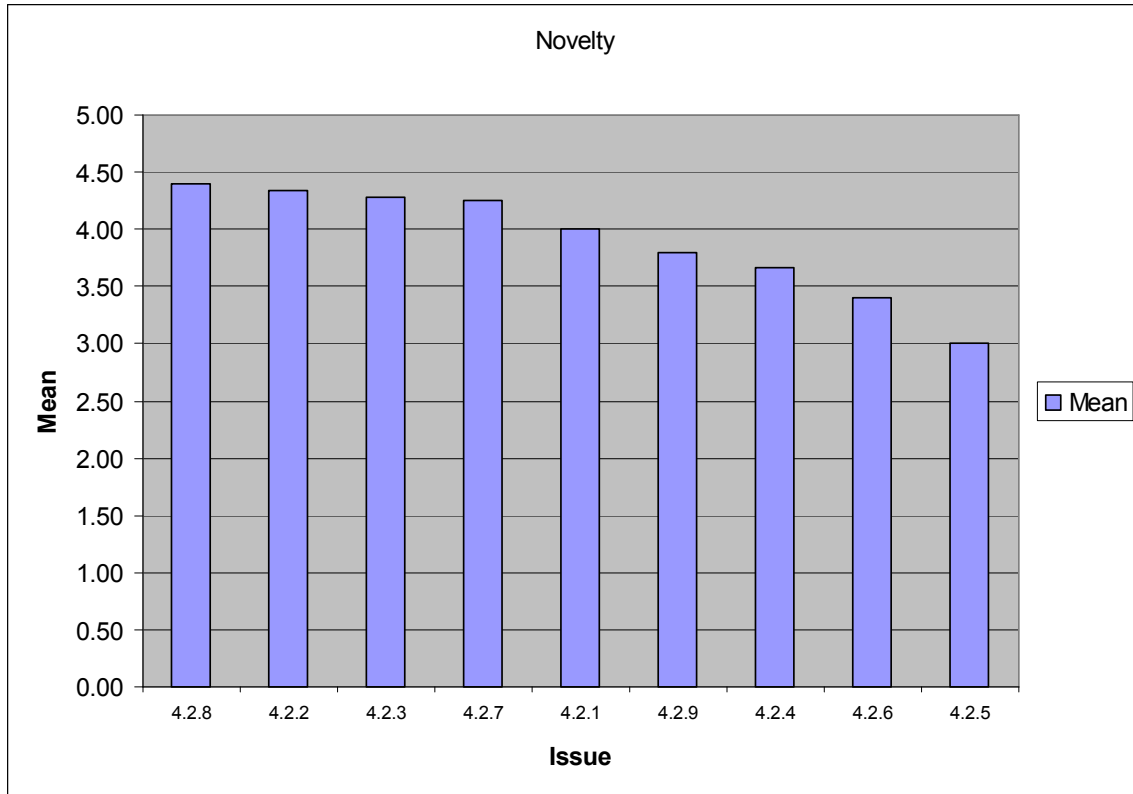


Figure 27 Sub-area 4.2 Novelty

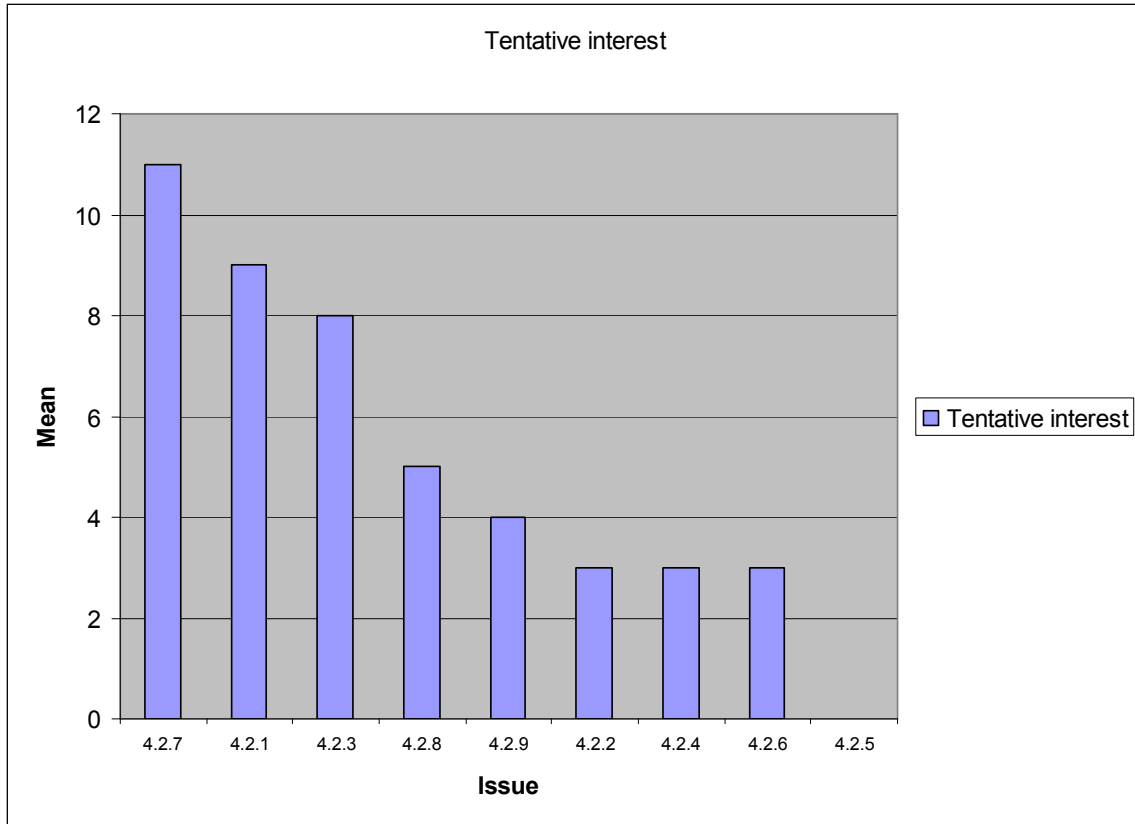


Figure 28 Sub-area 4.2 Tentative interest

Sub-area 4.3

Table 15 Sub-area 4.3 Statistics from Task 2

Issue	Novelty					Tentative interest					
	Mean	Std	min	max	Respondents	0	1	2	3	Respondents	Weighted sum
4.3.1	3.17	1.19	1	5	12	17	2	5	1	25	15
4.3.2	4.00	1.41	2	6	7	16	2	3	0	21	8
4.3.3	3.80	1.30	2	5	5	19	1	1	0	21	3
4.3.4	4.44	1.59	2	6	9	15	3	0	3	21	12
4.3.5	4.67	1.37	3	7	6	18	0	2	0	20	4
4.3.6	4.67	1.37	3	7	6	16	2	1	1	20	7
4.3.7	2.60	1.14	1	4	5	19	1	0	0	20	1

* Weighted sum: Sum of the respondents weighted with the specific criteria (0,1,2,3)

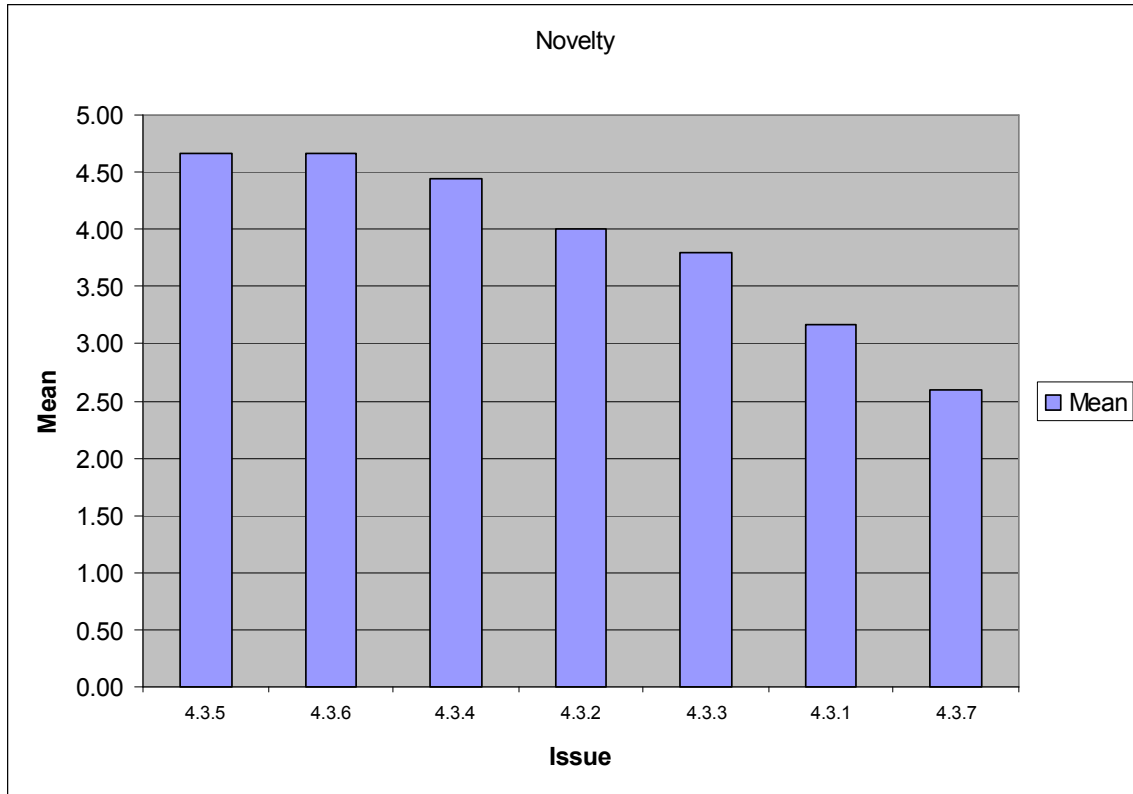


Figure 29 Sub-area 4.3 Novelty

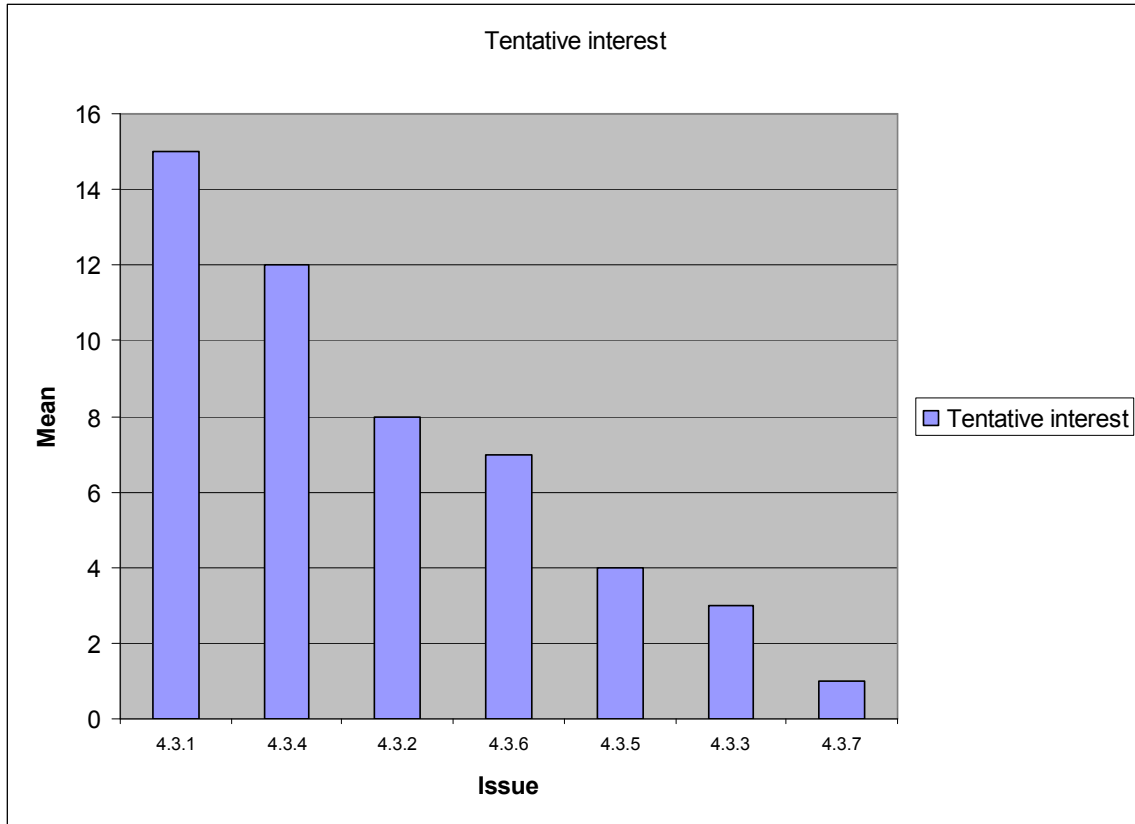


Figure 30 Sub-area 4.3 Tentative interest